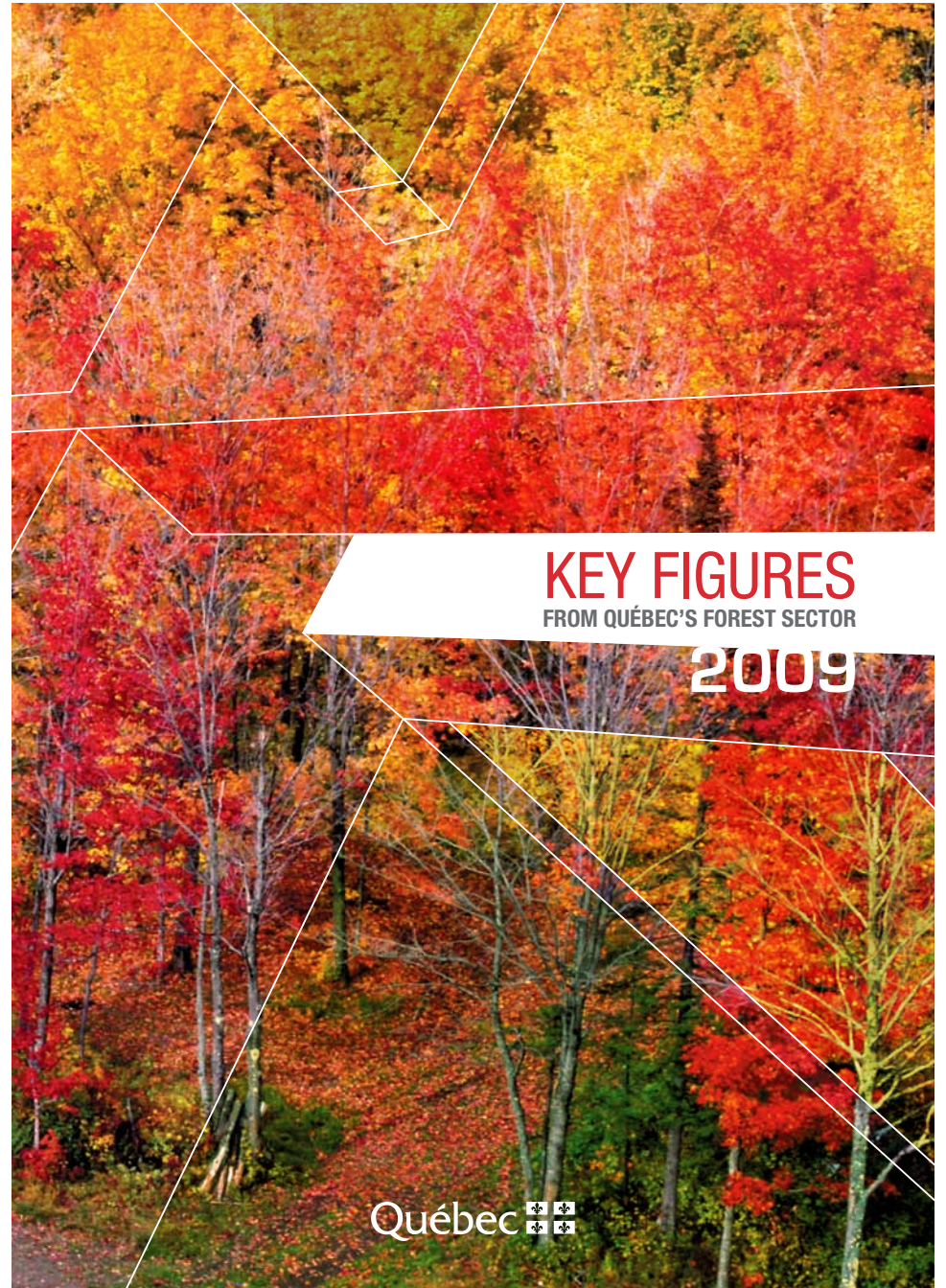


2009-3007

Ressources naturelles
et Faune
Québec



KEY FIGURES

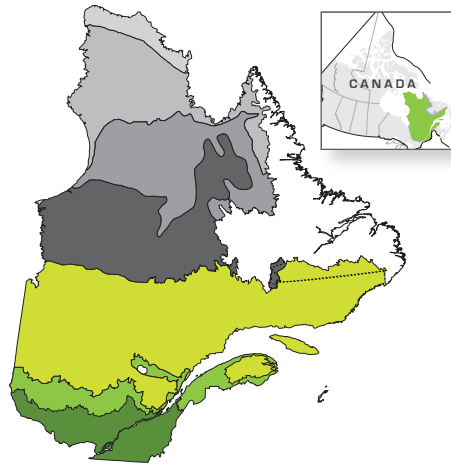
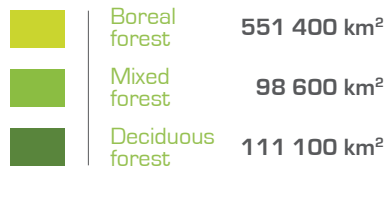
FROM QUÉBEC'S FOREST SECTOR

2009

Québec



VEGETATION ZONES



MAIN TREE SPECIES

Boreal forest:
black spruce, balsam fir, white birch.

Mixed forest:
yellow birch, balsam fir.

Deciduous forest:
sugar maple, yellow birch.

Extensive, majestic forests are found throughout Québec, alternating with thousands of lakes and rivers. They play a key economic, social and environmental role. There is general agreement in Québec that the forests must be developed sustainably, in the best interests of present and future generations.

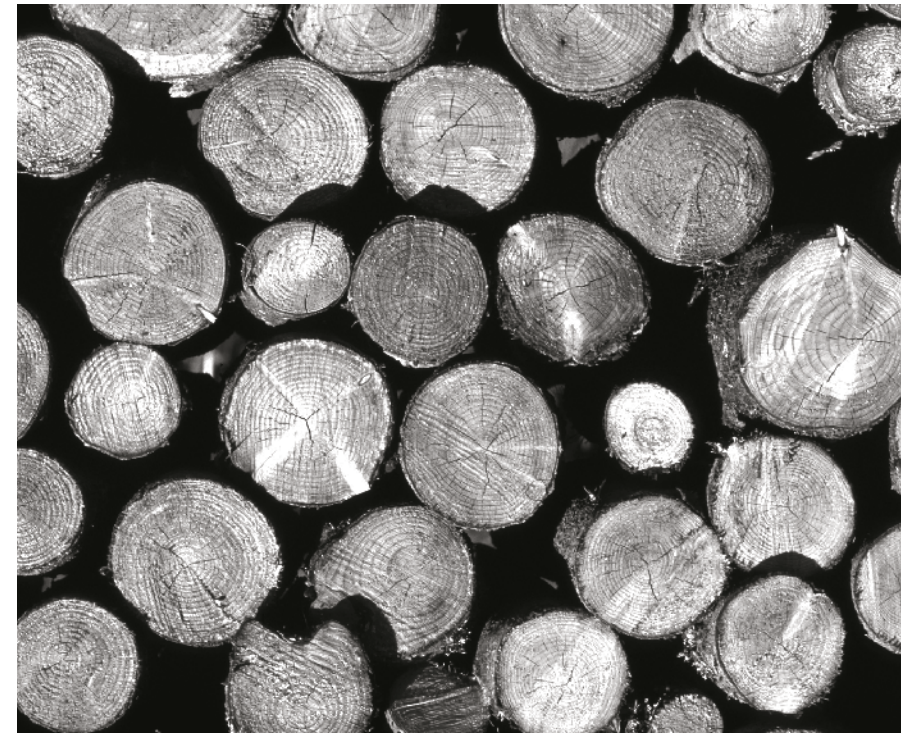
Québec has a population of 7.6 million people, living mainly along the St. Lawrence valley. Almost 761.100 km² of Québec's total area of 1.7 million km² is forested, representing almost half its territory.

Roughly 92% of the land in Québec is under public ownership, and over half of this land has commercially-viable forests.

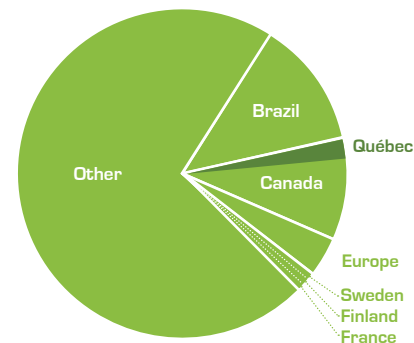
The forests are an essential resource for the well-being of the regions and of Québec as a whole.

KEY

M	million
m ³	cubic metre
km ²	square kilometre
ha	hectare
u	unit
t	tonne
kg	kilogram



FORESTS WORLDWIDE



Total area	40 000 000 km²
Canada (total)	4 021 000 km ²
Brazil	5 000 000 km ²
Europe	1 500 000 km ²
Québec	761 100 km²*
Sweden	260 000 km ²
Finland	230 000 km ²
France	140 000 km ²

* Québec has over 2% of the world's forests.

LAND IN QUÉBEC

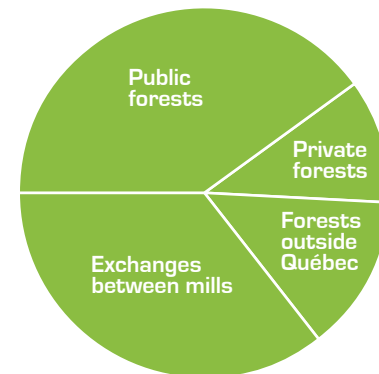
Public land (Québec)	1 372 021 km ²	91.6 %
Private land	116 398 km ²	8.0 %
Federal land	9 334 km ²	0.4 %

ANNUAL ALLOWABLE CUT AND VOLUME HARVESTED (2006-2007)

	Public forests
Annual allowable cut	35 200 000 m ³
Volume harvested	24 300 000 m ³
	Private forests
Annual allowable cut	12 000 000 m ³
Volume harvested	8 800 000 m ³



FACTORY CONSUMPTION BY ORIGIN, 2007 (in cubic metres)



Public forests	23 471 000
Private forests	6 201 000
Forest outside Québec	8 044 000
Exchanges between mills*	20 908 000
Total	58 625 000

* Chips, sawdust, shavings, etc.

FOREST MANAGEMENT

SILVICULTURAL TREATMENTS COMPLETED IN 2007-2008 (hectares)

	Public forests	Private forests (estimated)
Site preparation	48 517	7 605
Replanting and seeding	50 083	8 574
Non-commercial treatments	86 687	18 663
Commercial treatments	300 291	14 530
Total	485 577	49 372



FOREST PROTECTION

AREAS AFFECTED BY SPRUCE BUDWORM (hectares)

	2005	2006	2007
Total area	43 300	50 500	110 700

FOREST PROTECTION

Intensive protection zone	2007
Fire (number)	892
Area affected (hectares)	278 000
Cost of prevention and firefighting (dollars)	108 800 000

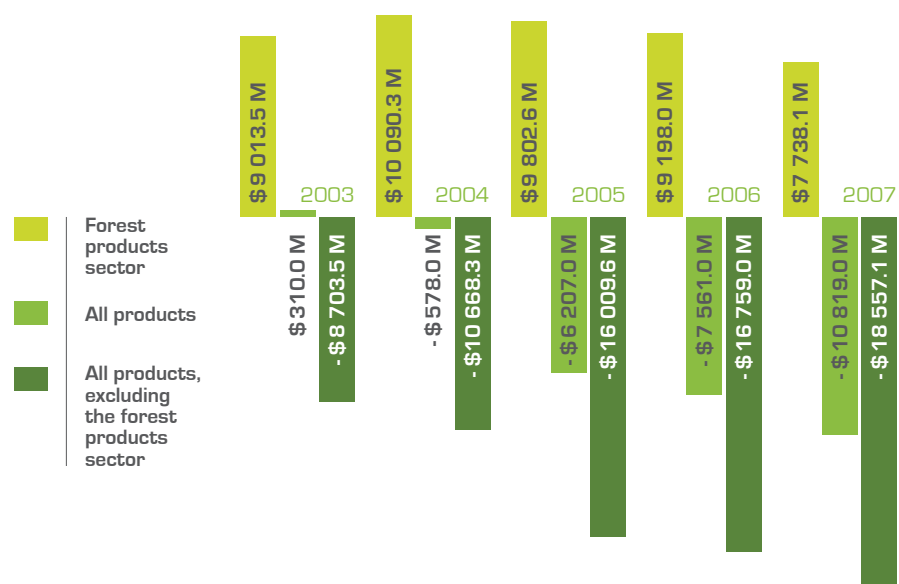
Restricted protection zone	2007
Fire (number)	43
Area affected (hectares)	64 700
Cost of prevention and firefighting (dollars)	1 300 000

ECONOMIC IMPORTANCE OF THE FOREST SECTOR IN QUÉBEC, 2006

Total jobs	73 439	13.0 % *
Wages	\$ 3 366.0 M	13.6 % *
Exports	\$ 9 571.9 M	13.7 %
GDP	\$ 7 191.3 M	2.7 %

*As a percentage of the manufacturing sector.

QUÉBEC'S BALANCE OF TRADE¹ IN THE FOREST PRODUCTS SECTOR AND FOR ALL PRODUCTS²



1. Balance of trade with countries outside Canada.

2. Sectors as defined by the North American Industry Classification System (NAICS).

Source: Institut de la statistique du Québec, Classification type de biens.



NON-TIMBER FOREST PRODUCTS, 2007

	Quantity	Value
Maple products	27 986 000 kg	\$ 144 380 000
Wild blueberries	19 531.7 t	\$ 45 615 300
Christmas trees (estimated)	13 100 000 u	\$ 32 255 000

QUÉBEC'S ESSENTIAL OILS INDUSTRY

	2006	2007
Number of factories	12	10
Imports	\$ 306 000	\$ 456 000
Exports	\$ 400	\$ 78 700



RECREATIONAL USE OF THE FOREST IN 2000

	Number of participants	Expenditure (in dollars)	Number of jobs
Fishing	813 600	1 047 800 000	9 754
Hunting	408 000	308 400 000	3 322
Outdoor activities	2 350 600	1 269 500 000	15 656
Wildlife-related trips	1 211 800	303 400 000	3 379

Québec 

2009 - 3007 



The yellow birch is
Québec's tree emblem

FOR MORE INFORMATION :

Services à la clientèle

Mail : 880, chemin Sainte-Foy, RC 120-C
Québec (Québec) G1S 4X4

Phone : 418 627-8600

Fax : 418 644-6513

E-mail : services.clientele@mrfn.gouv.qc.ca

Toll-free : 1 866 248-6936

www.mrfn.gouv.qc.ca