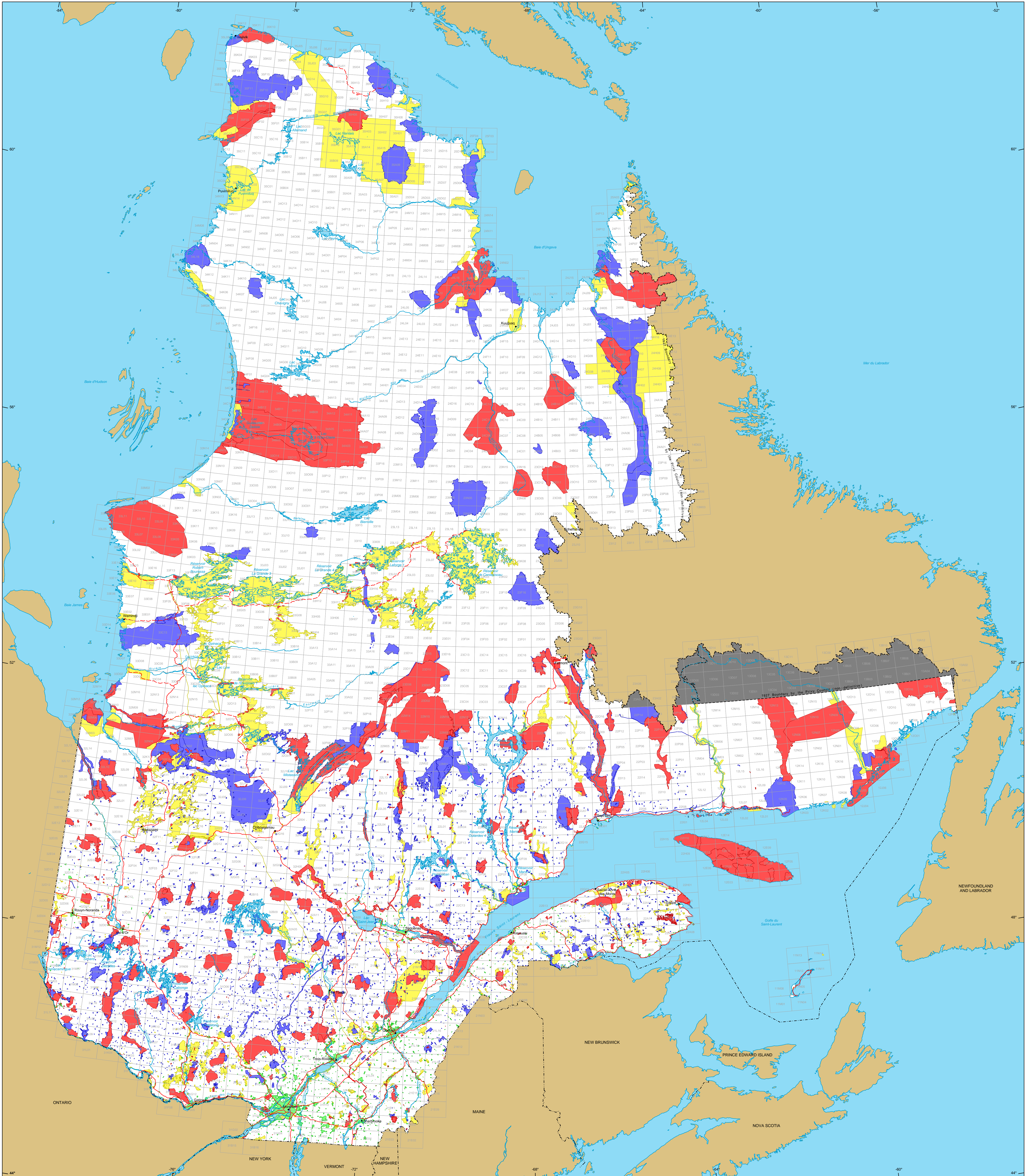


# Restrictions to Mining Exploration



## Restrictions to mining exploration

- Major Exploration prohibited  
Area : 17 668 040 ha
- Minor Exploration under specific conditions  
Area : 12 417 548 ha
- Major Urban perimeter  
Area : 835 804 ha
- Major Land suspended temporarily  
Area : 12 768 032 ha
- Major Withdrawal from staking, Order in Council  
Area : 2 897 400 ha

## Border

- International
- Interprovincial, Interstate
- Québec - Newfoundland and Labrador (This border is not definitive).

## Road Network

- Road
- Unpaved Road

## Hydrography

- Lake
- River

## Populated Place

- Populated Place

## Other Jurisdiction

- Other Jurisdiction

## 1:50 000 NTS Sheets Limits

- 1:50 000 NTS Sheets Limits

Area of the Province of Québec : 166 744 100 ha

**Notices :**  
The areas calculated represent the sum of the surface area of each individual mining restriction. The calculation does not take into consideration the possible overlapping of some areas.  
The areas indicated are calculated according to the Modified Transverse Mercator coordinate system with the NAD 83 geodesic datum.

**Metadata**  
Geodesic Datum : NAD 83  
Coordinate System : Conic Lambert with two standard parallels (46° and 60°)

Sources	Organization	Year
Data	MERN	2016
Mining Cartographic Reference (SICOA TM, SICOA SM)	MERN	2011

**Realisation**  
Ministère de l'Énergie et des Ressources naturelles  
Direction du développement et du contrôle de l'activité minière  
Notice : This document has no legal value.

