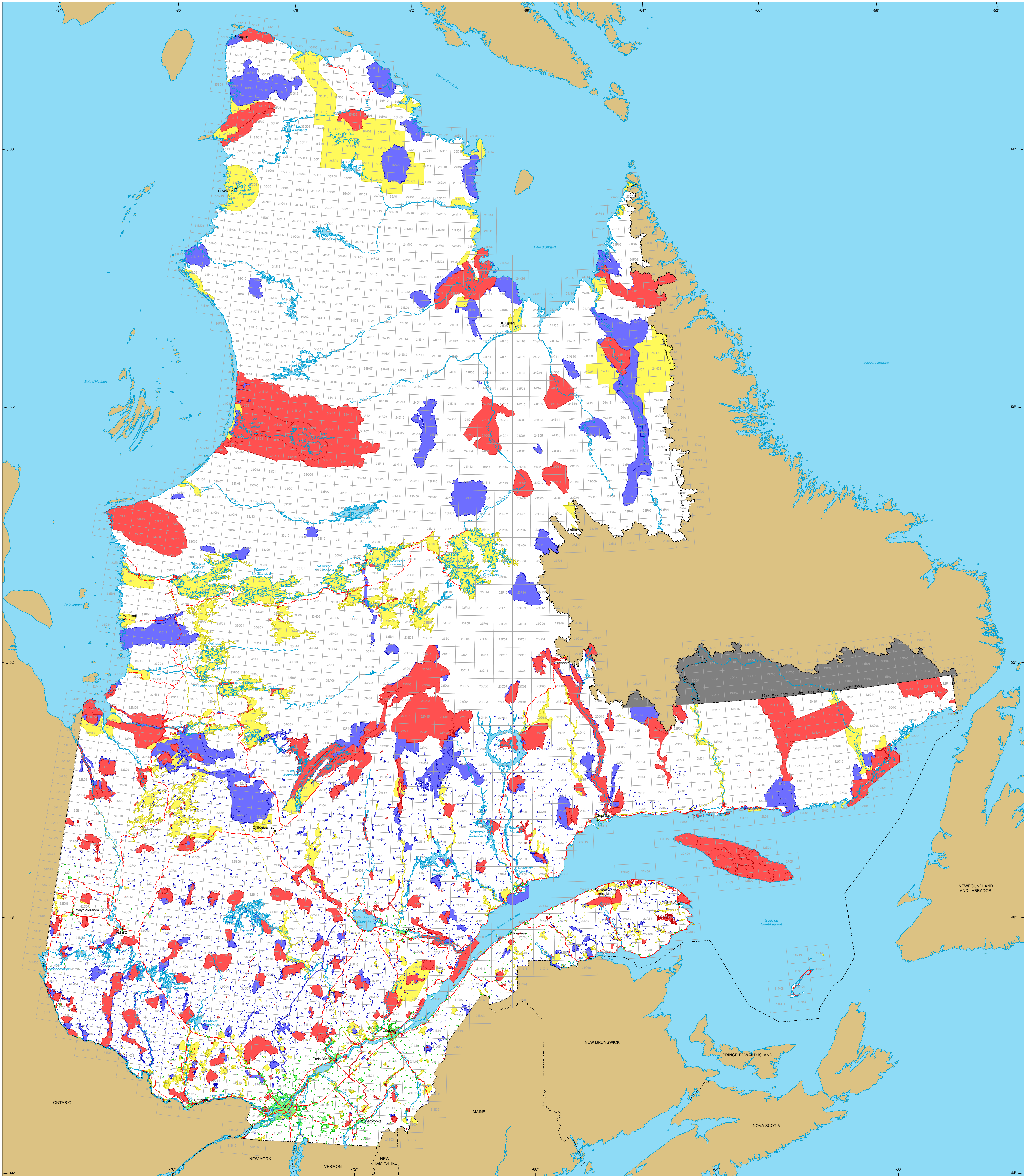


Restrictions to Mining Exploration



- Restrictions to mining exploration**
- Major Exploration prohibited Area: 17 642 598 ha
 - Minor Exploration under specific conditions Area: 12 489 267 ha
 - Major Urban perimeter Area: 835 804 ha
 - Major Land suspended temporarily Area: 13 512 607 ha
 - Major Withdrawal from staking, Order in Council Area: 2 897 400 ha

- Border**
- International
 - Interprovincial, Interstate
 - Québec - Newfoundland and Labrador (This border is not definitive)
- Road Network**
- Road
 - Unpaved Road
- Hydrography**
- Lake
 - River
- Populated Place**
-
- Other Jurisdiction**
-
- 1:50 000 NTS Sheets Limits**
-

Area of the Province of Québec: 166 744 100 ha

Notices:

The areas calculated represent the sum of the surface area of each individual mining restriction. The calculation does not take into consideration the possible overlapping of some areas.

The areas indicated are calculated according to the Modified Transverse Mercator coordinate system with the NAD 83 geodesic datum.

Metadata

Geodesic Datum: NAD 83
 Coordinate System: Conic Lambert with two standard parallels (46° and 60°)

Scale: 1:50 000

0 50 100 150 km

Sources

Data	Organization	Year
Mining	MERN	2016
Cartographic Reference (SICQA TM, SICQA SM)	MERN	2011

Realisation

Ministère de l'Énergie et des Ressources naturelles
 Direction du développement et du contrôle de l'activité minière
 Notice: This document has no legal value.

© Gouvernement du Québec, September 7, 2016