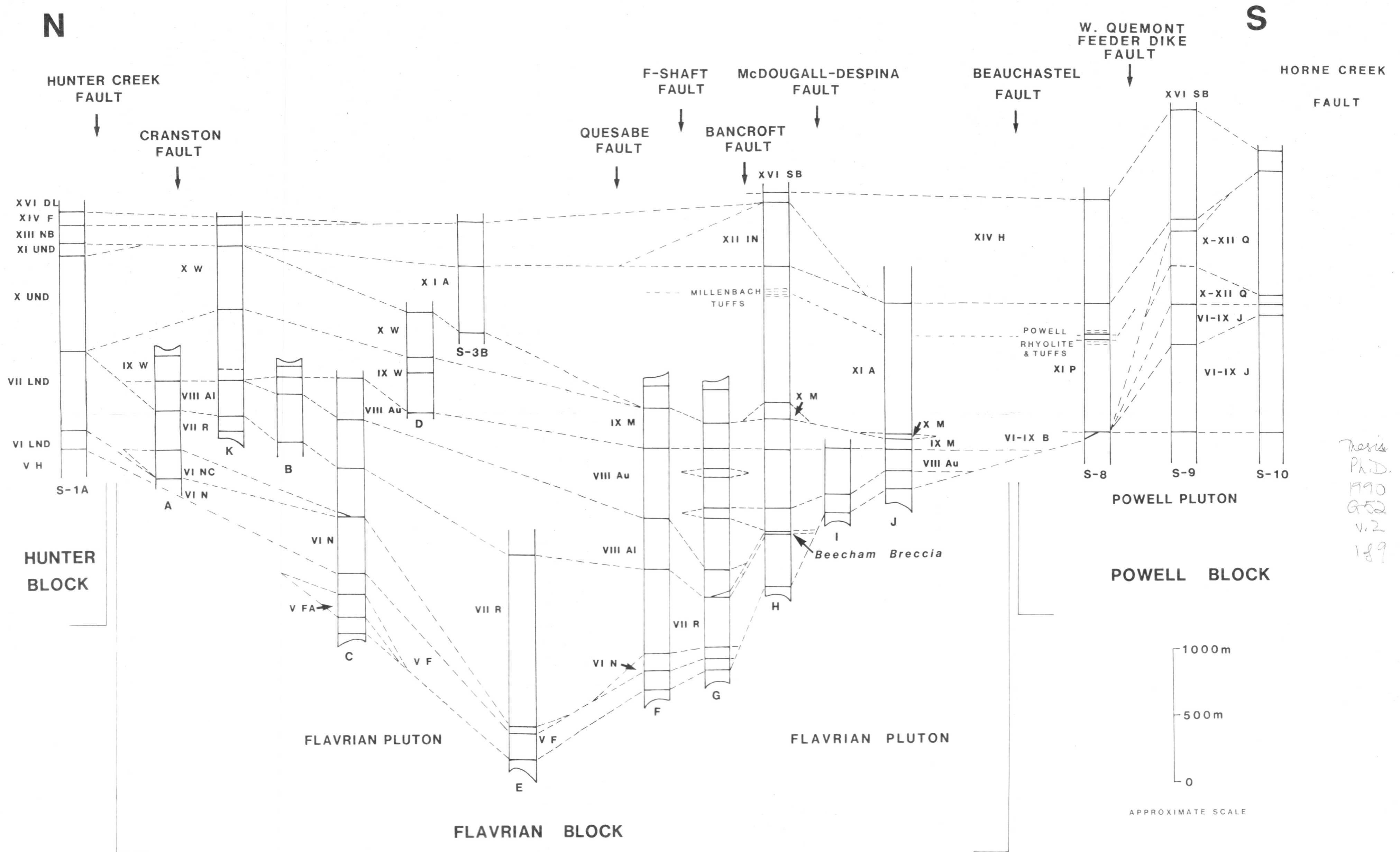


LITHOSTRATIGRAPHIC CORRELATION



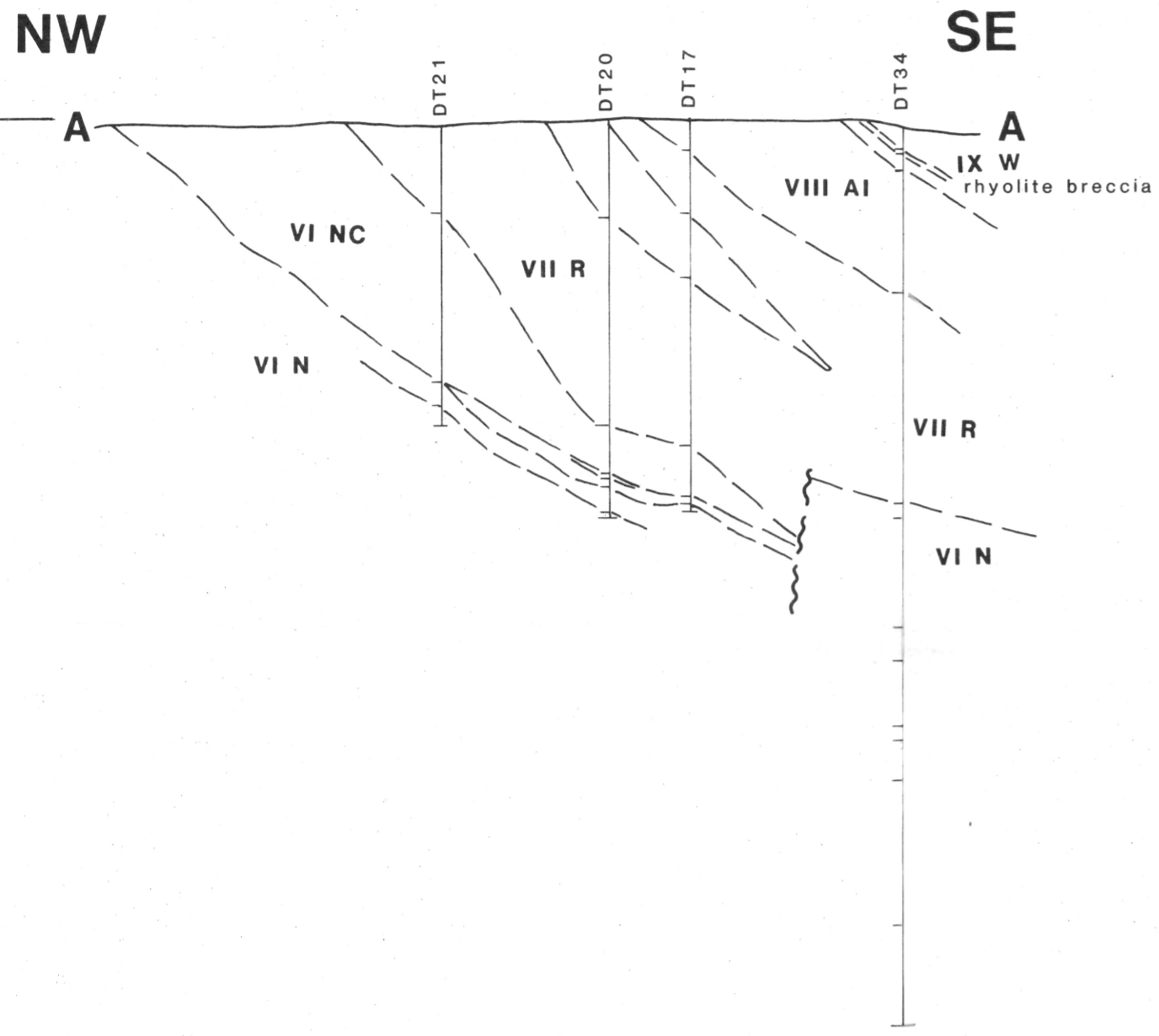
*Thesis
Ph.D.
1990
G52
v.2
189*

FIGURE 9.2
LITHOSTRATIGRAPHIC CORRELATION
H.L. Gibson 1985

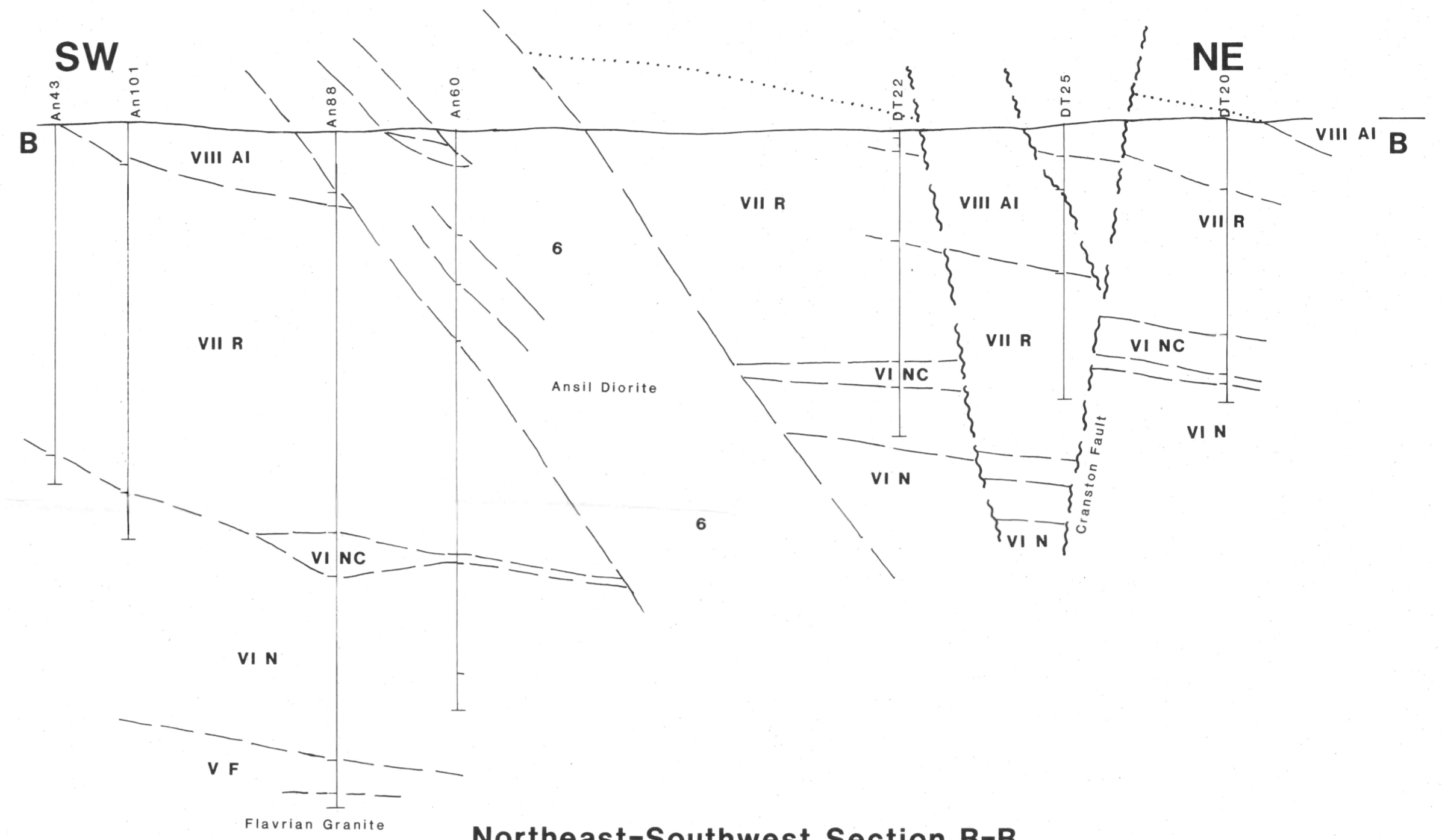
STRUCTURAL CROSS-SECTIONS

CRANSTON , ANSIL , WAITE DFAULT , NORBEC SECTORS

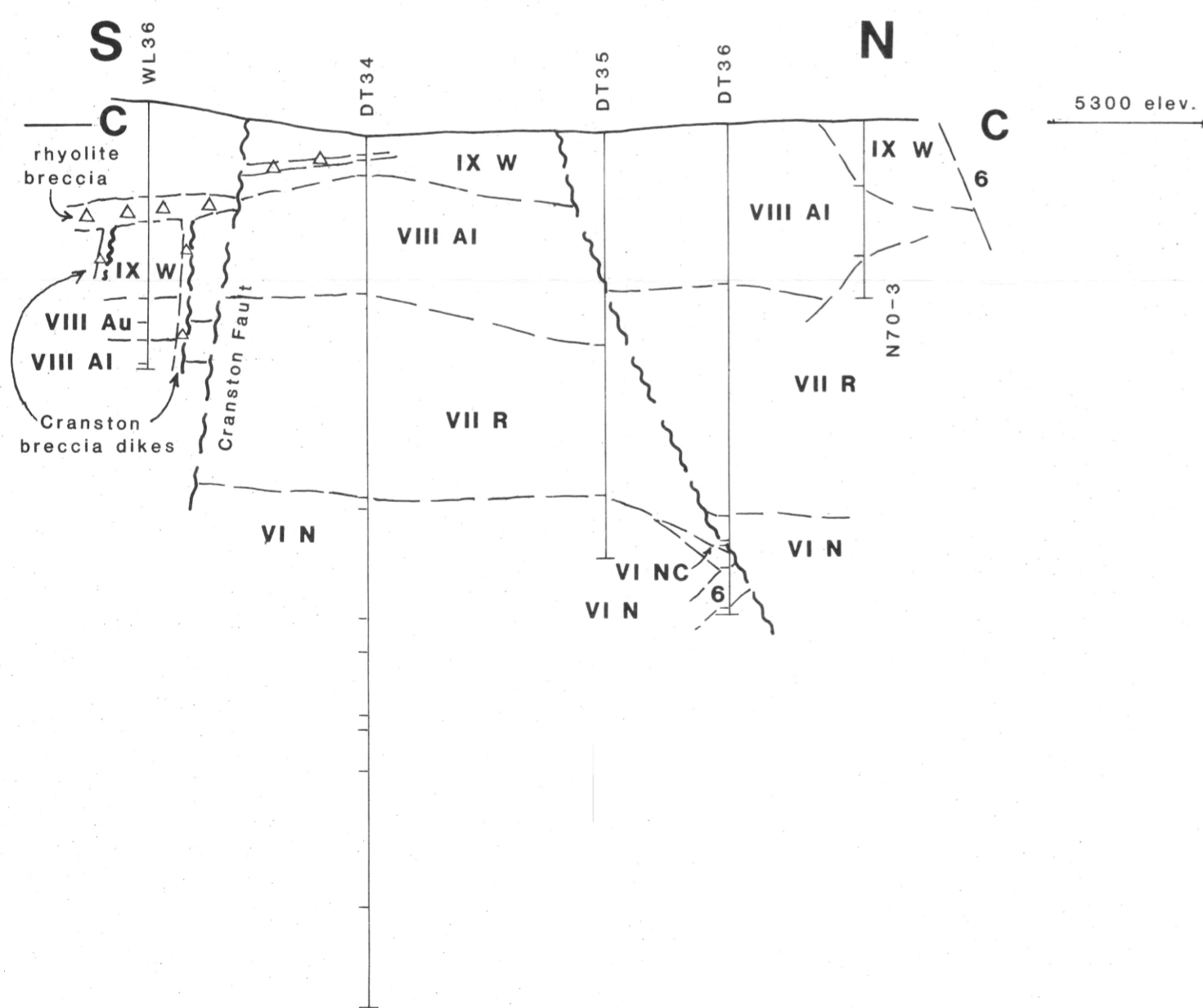
0 500m



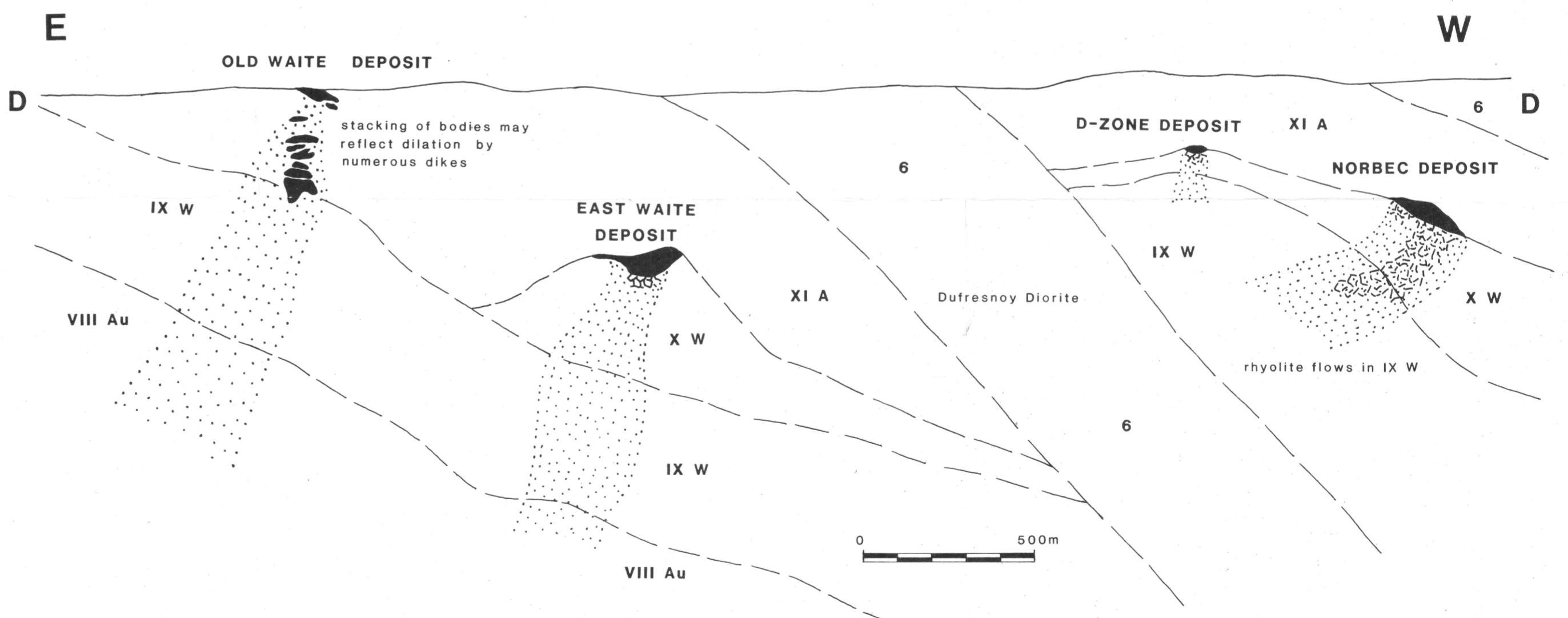
Northwest-Southeast Section A-A



Northeast-Southwest Section B-B
ANSIL - CRANSTON Sectors



North-South Section C-C
across the Cranston Fault



East-West Section D-D across Dufresnoy Diorite
WAITE DFAULT-NORBEC Sectors

(modified from Bancroft and Atkinson, 1981, and
Clarke, 1983)

5300m equals 300m a.s.l.

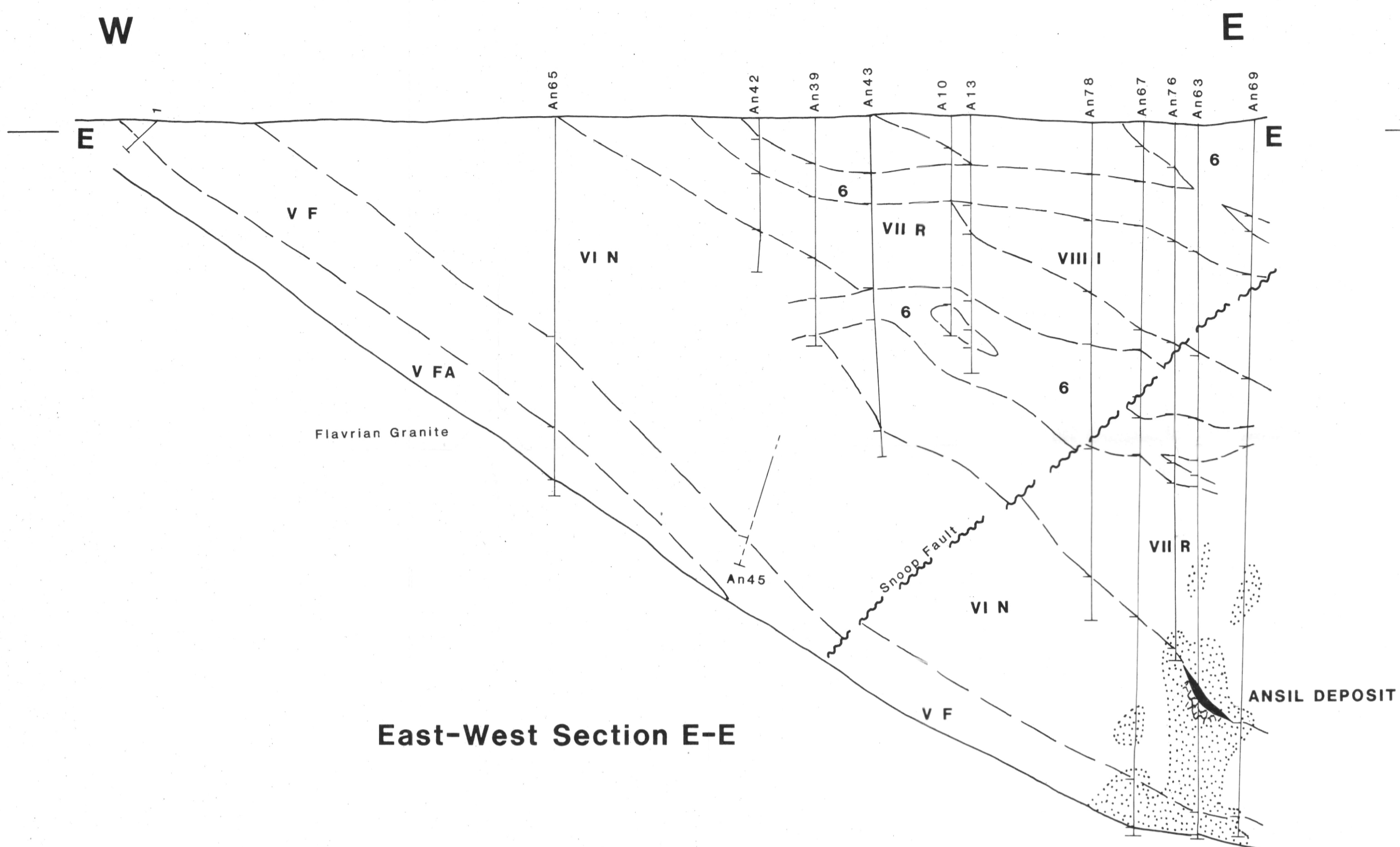
Thesis
Ph.D.
1980
G.S.
v.2
2/89

FIGURE 9.3

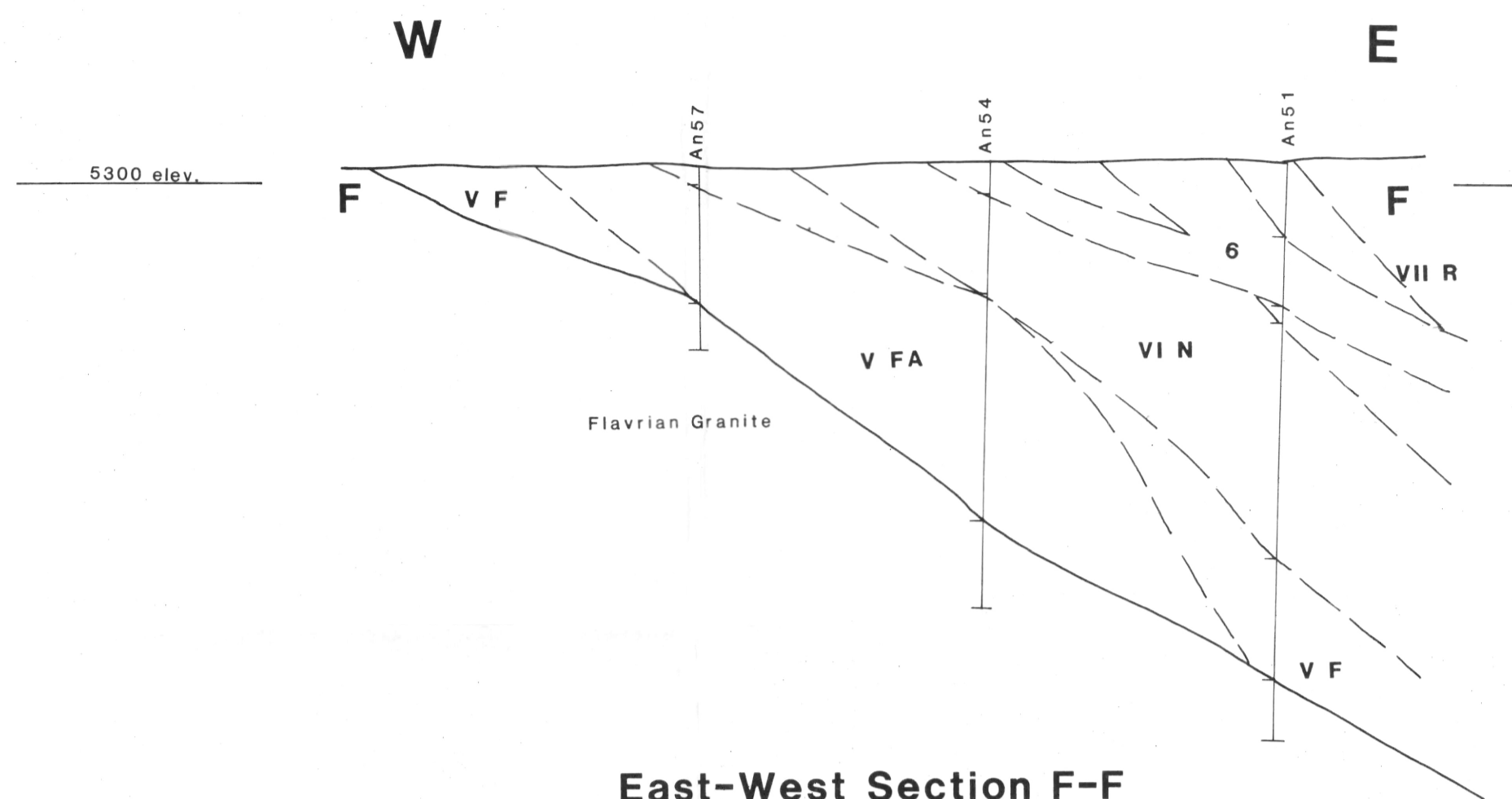
STRUCTURAL CROSS-SECTIONS

ANSIL SECTOR

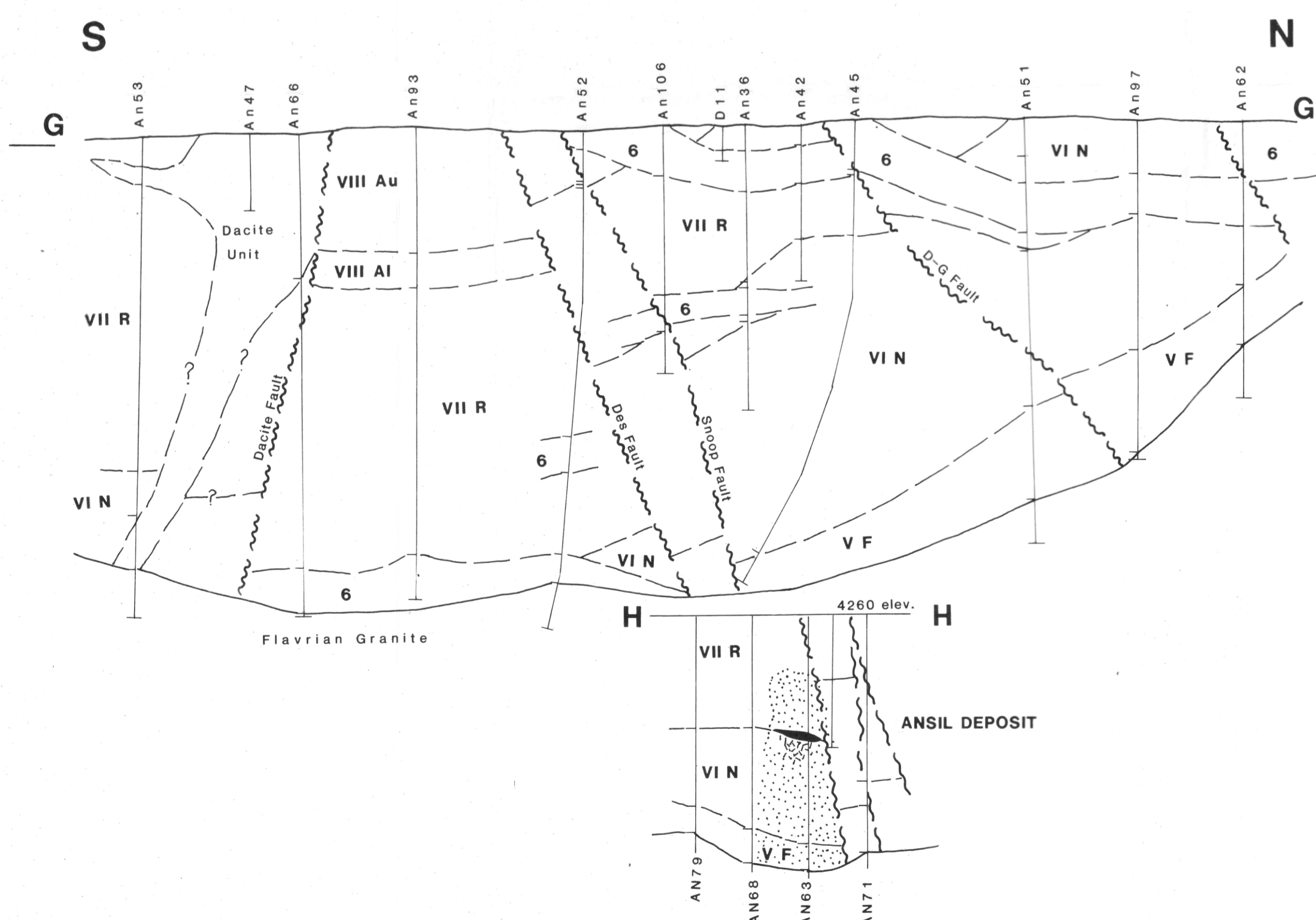
0 500m



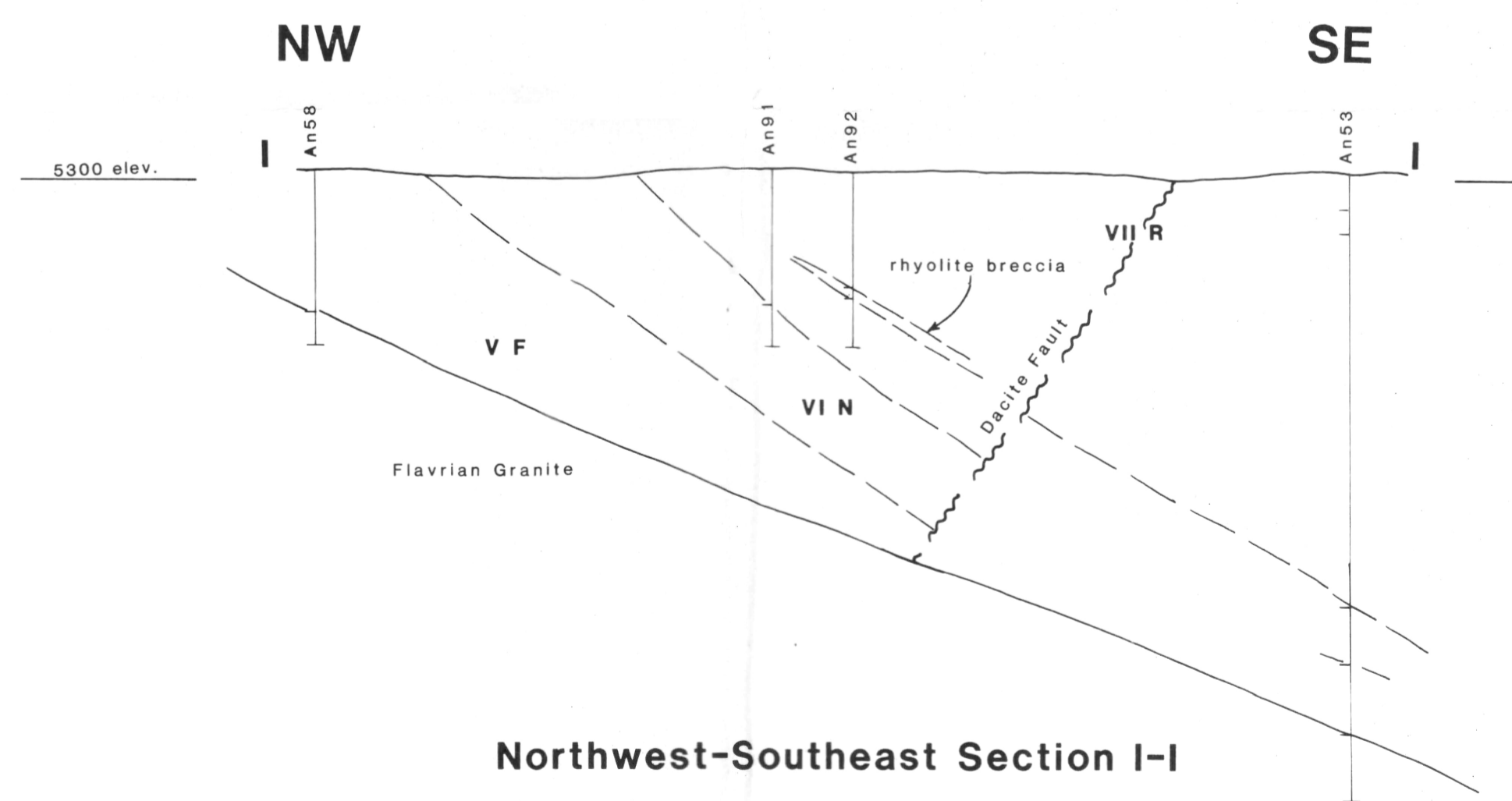
East-West Section E-E



East-West Section F-F



North-South Sections G-G and H-H



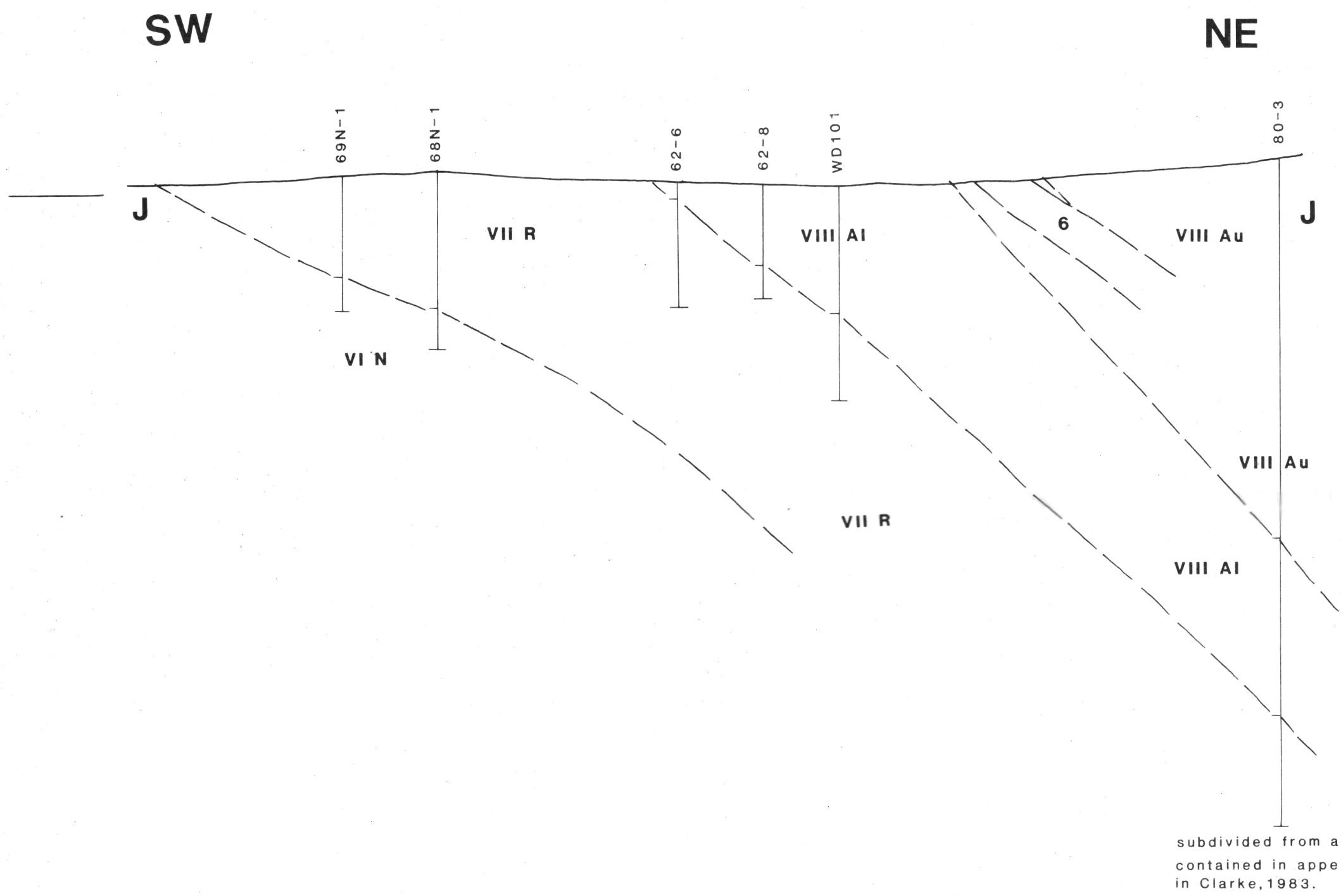
Northwest-Southeast Section I-I

5300m equals 300m a.s.l.

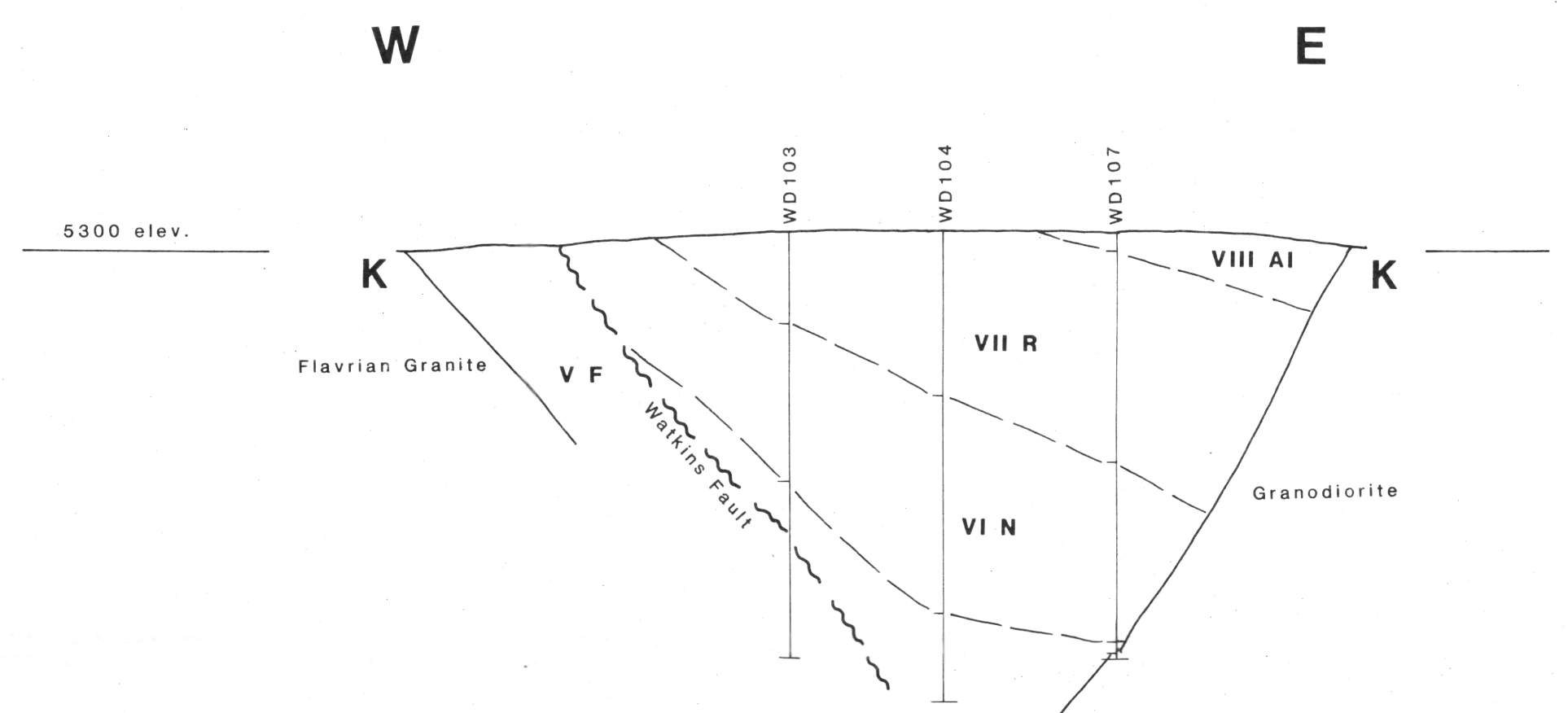
Thesis
Ph.D.
1990
GSD
v.3
219
FIGURE 9.4

STRUCTURAL CROSS-SECTIONS

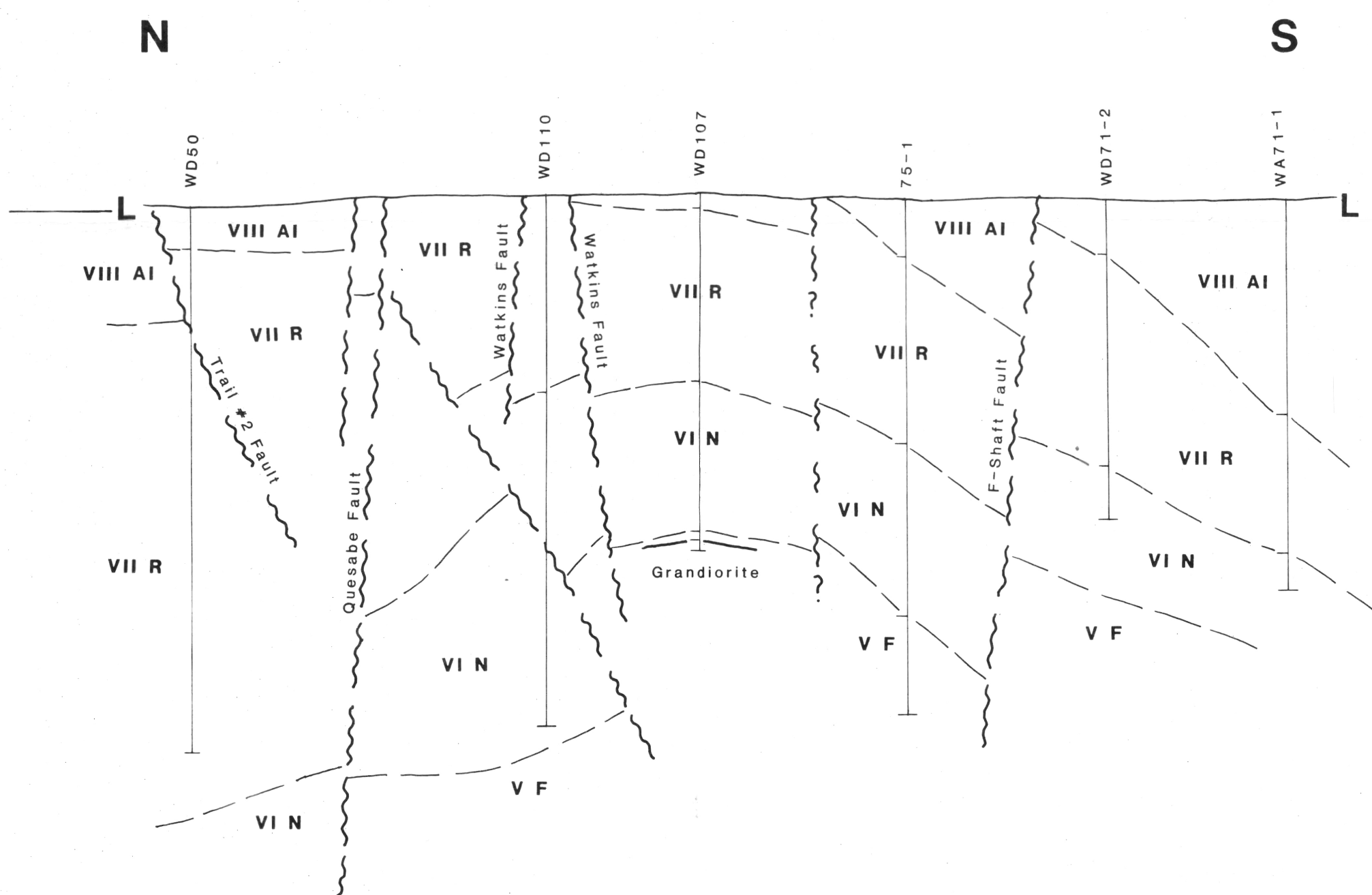
WAITE DFAULT , F-SHAFT SECTORS



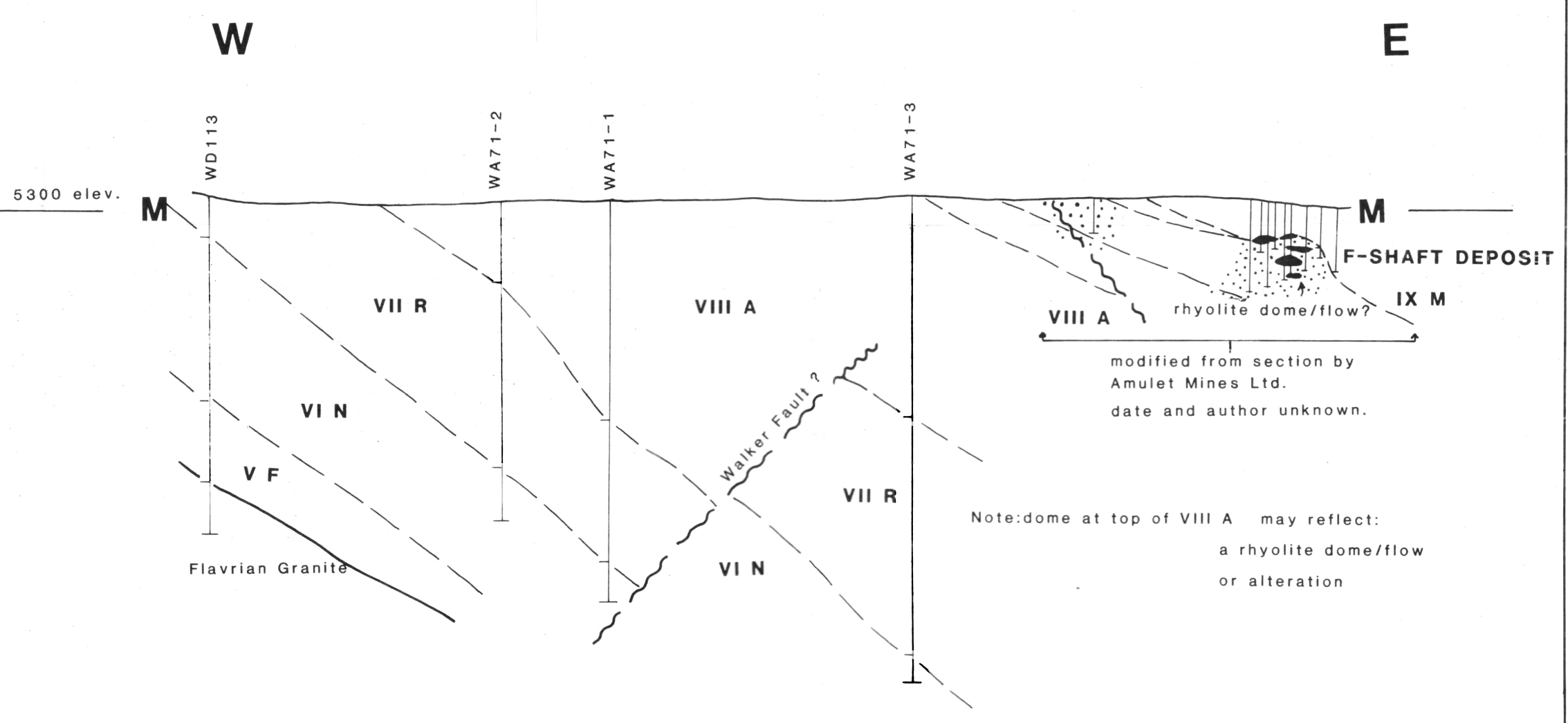
Northeast-Southwest Section J-J



East-West Section K-K



North-South Section L-L
WAITE DFAULT - F-SHAFT Sectors



East-West Section M-M
F-SHAFT Sector

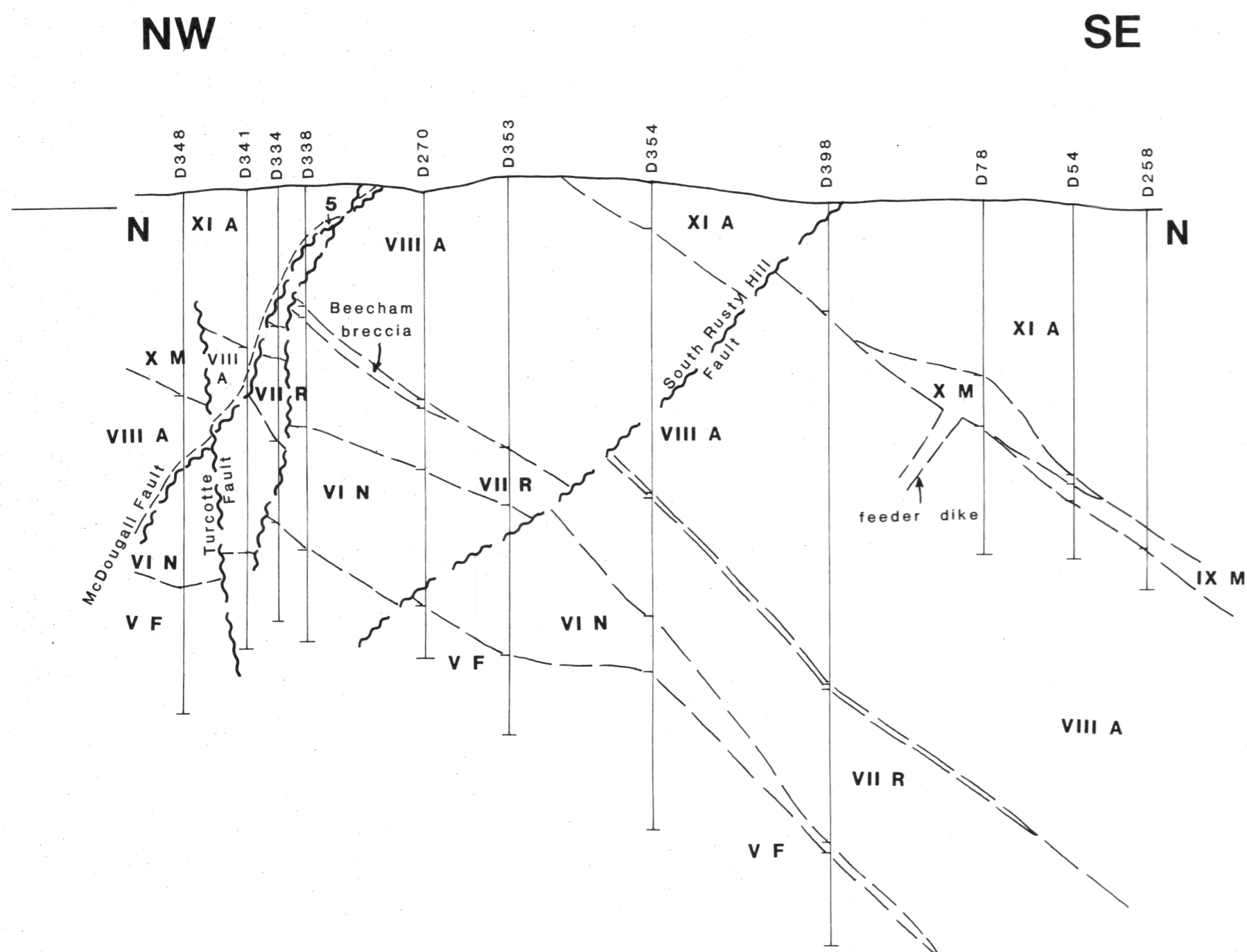
5300m equals 300m a.s.l.

Theris
Ph.D.
1990
G.S.
v.2
4/9

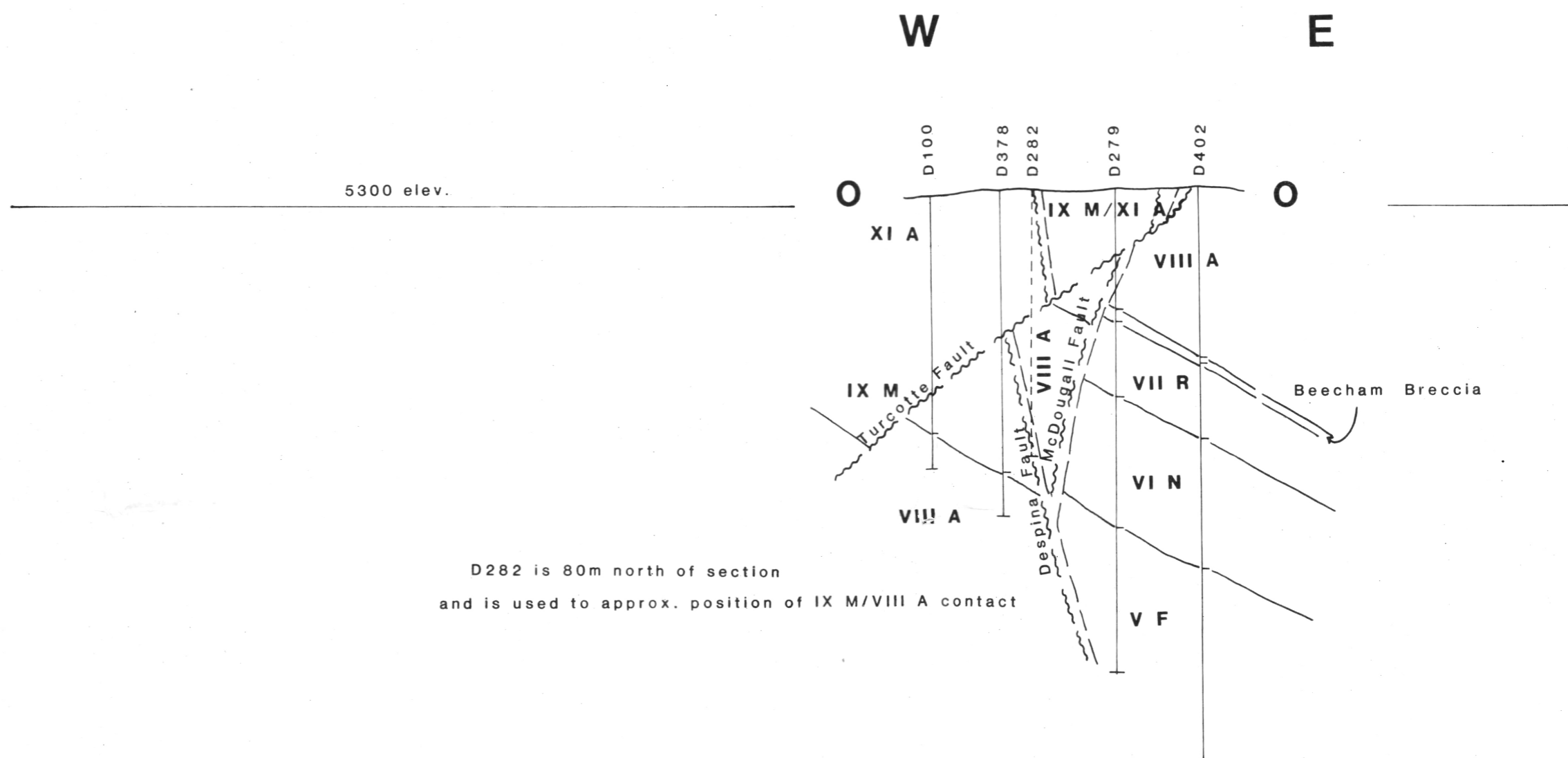
FIGURE 9.5

STRUCTURAL CROSS-SECTIONS

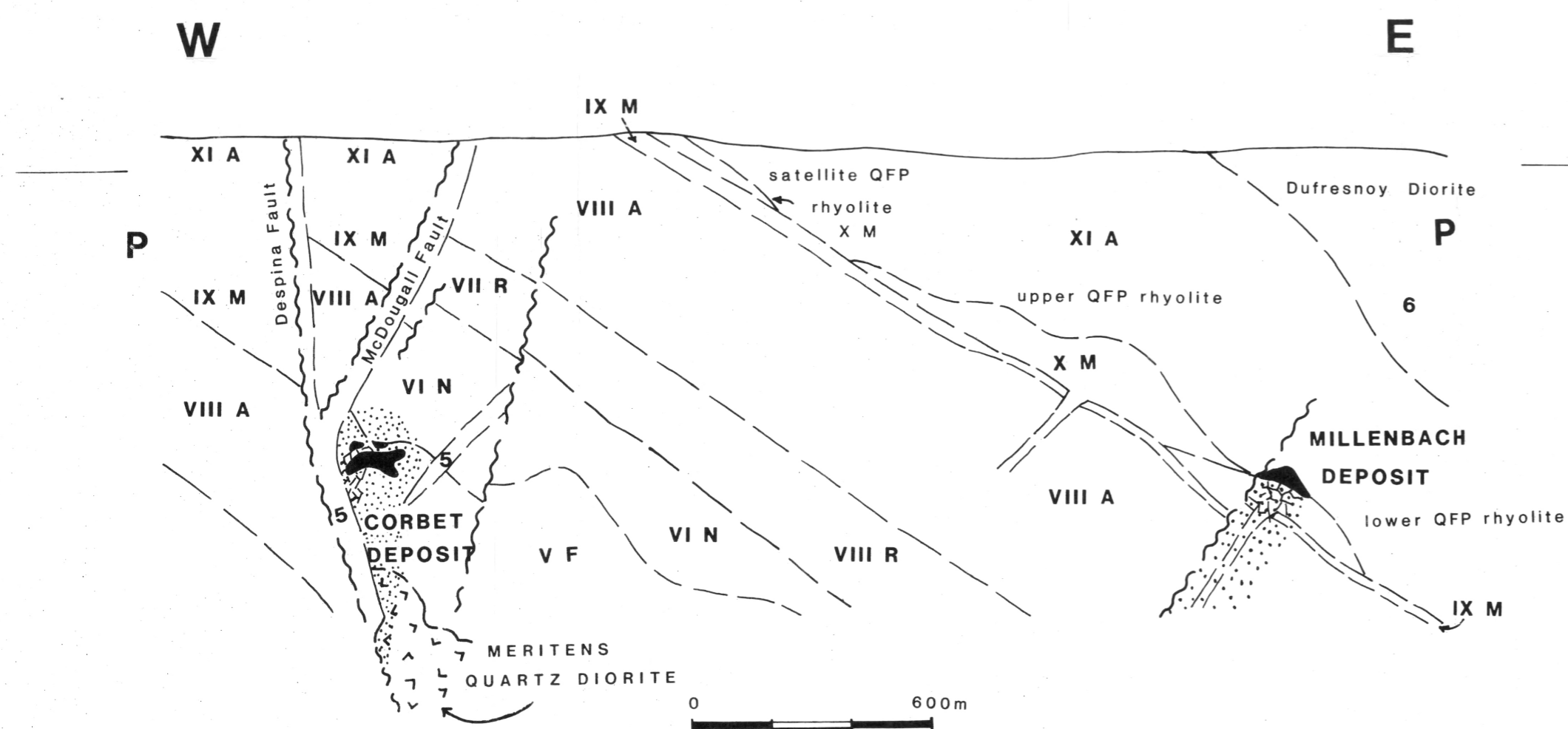
AMULET-MILLENBACH , DESPINA SECTORS



Northwest-Southeast Section N-N

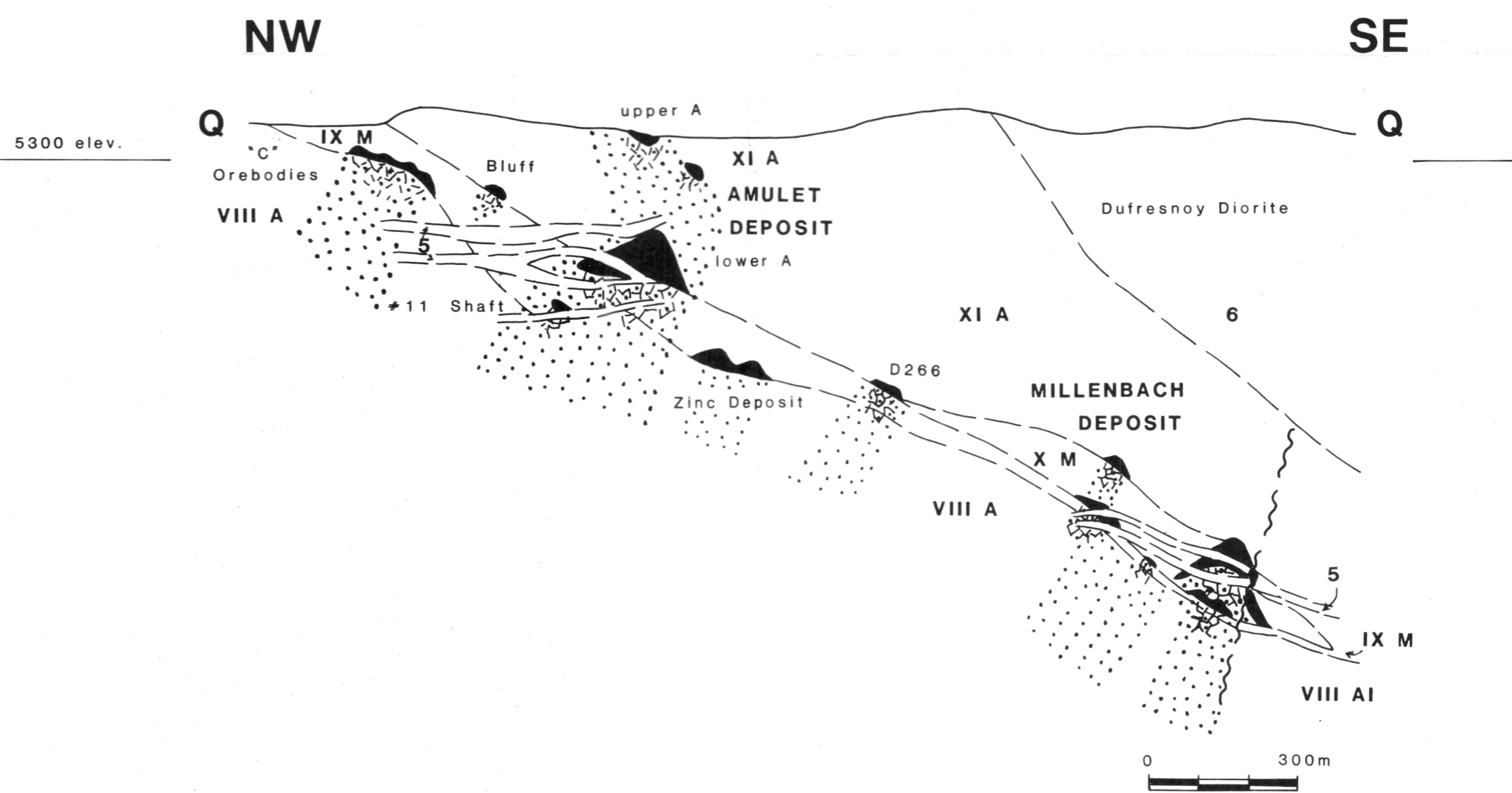


East-West Section O-O
across the McDougall-Despina Fault
DESPINA - AMULET-MILLENBACH Sectors



East-West Section P-P between the Corbet and Millenbach Deposits

(after Knuckey et al, 1982)



Northwest - Southeast Section Q-Q

(after Knuckey et al, 1982)

5300m equals 300m a.s.l.

Theris
Ph.D.
1990
AS2
v.2
589

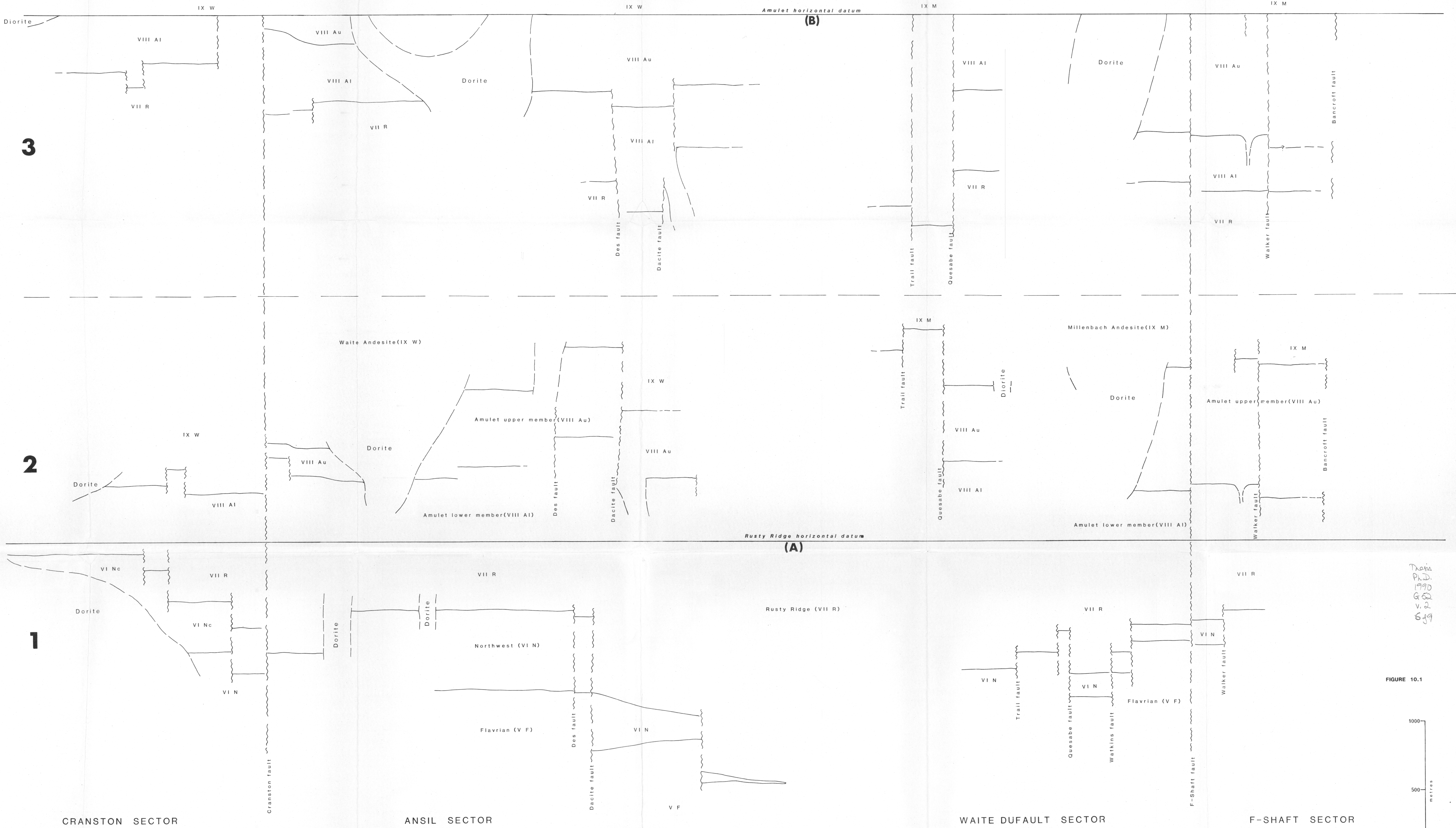
N

S

NORTH-SOUTH STRATIGRAPHIC CROSS-SECTIONS

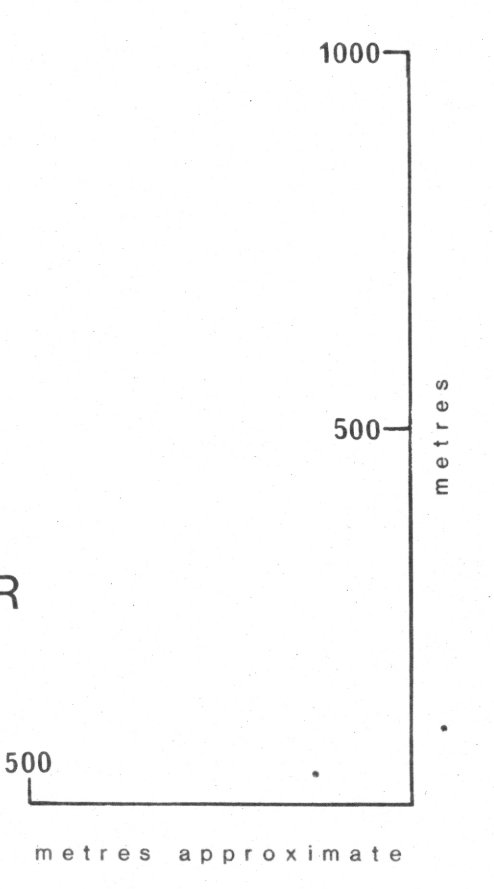
(A) assuming the top contact of the Rusty Ridge Formation to be horizontal
(B) assuming the top contact of the Amulet Formation to be horizontal

thicknesses are apparent thickness measured from 1:10,000 geologic map, horizontal distance is approximate



DATA
P.L.D.
1990
G. 2
v. 2
6.99

FIGURE 10.1



Thesis
Ph.D.
1990
GS2
v.2
789

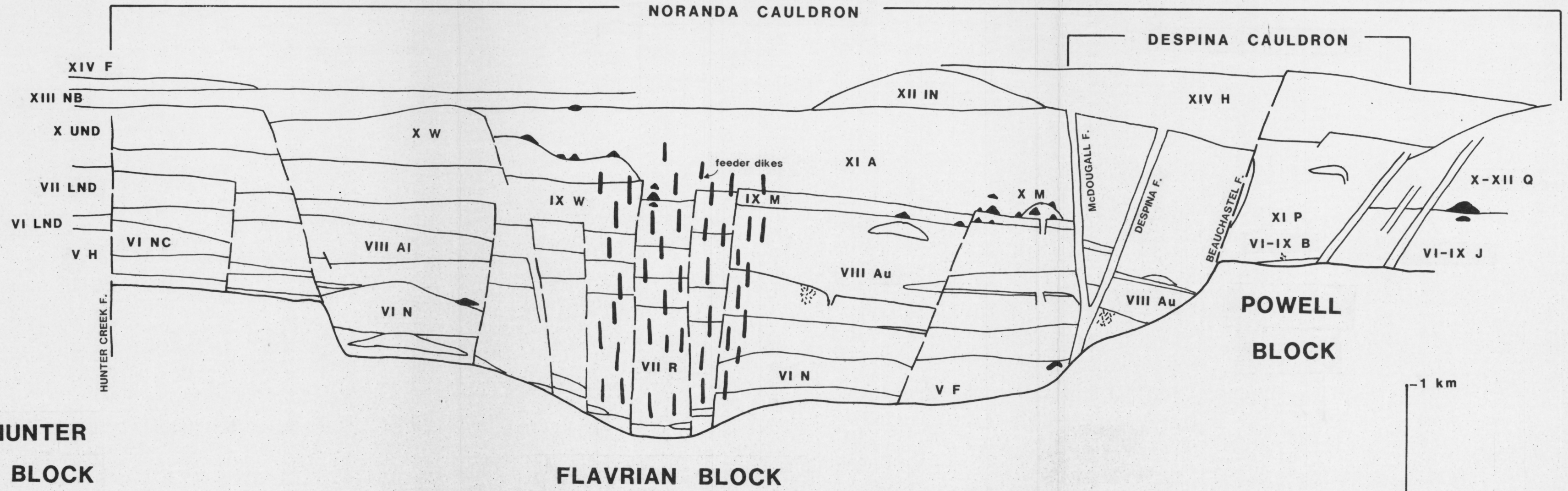
N

STRUCTURAL CROSS-SECTION

S

NORANDA CAULDRON

DESPINA CAULDRON



HUNTER
BLOCK

FLAVRIAN BLOCK

POWELL
BLOCK

Post extrusion of the Here Creek Rhyolite formation (XIV H)

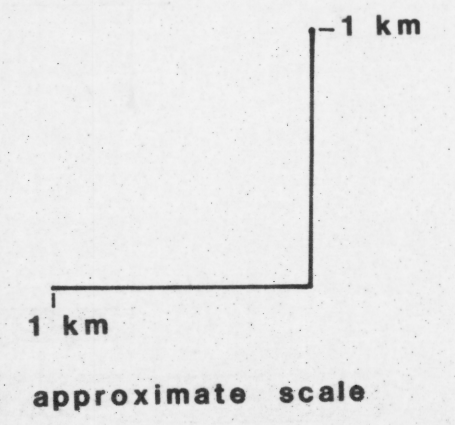
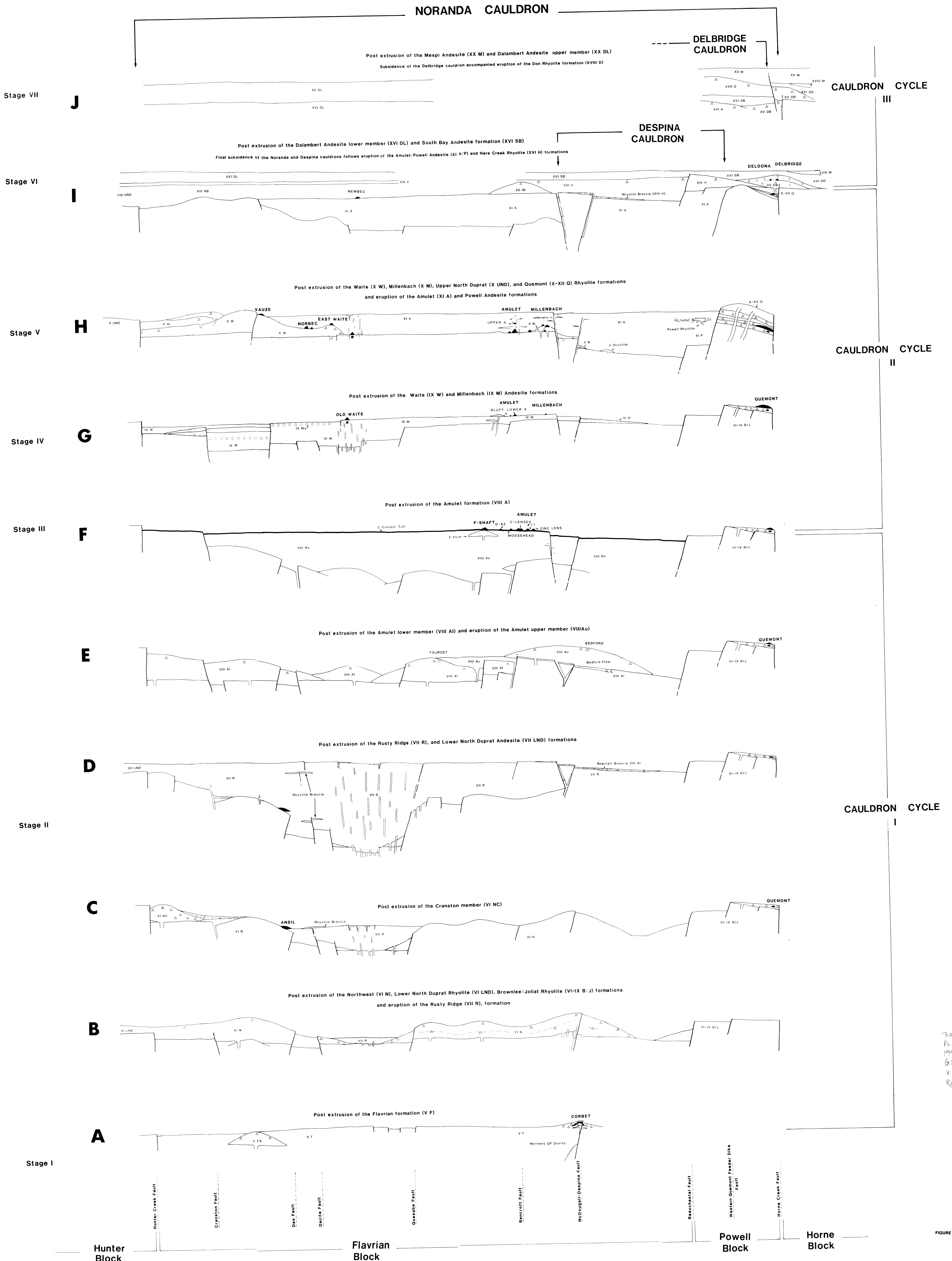


FIGURE 11.1

STAGES IN DEVELOPMENT OF THE NORANDA CAULDRONS

N

S



2014
P.L.D.
1993
G.S.
V.2
889

FIGURE 11.4

6P6
 1970
 P.M.D.
 1970
 1970
 1970

WAITE ANDESITE FORMATION (IX W)

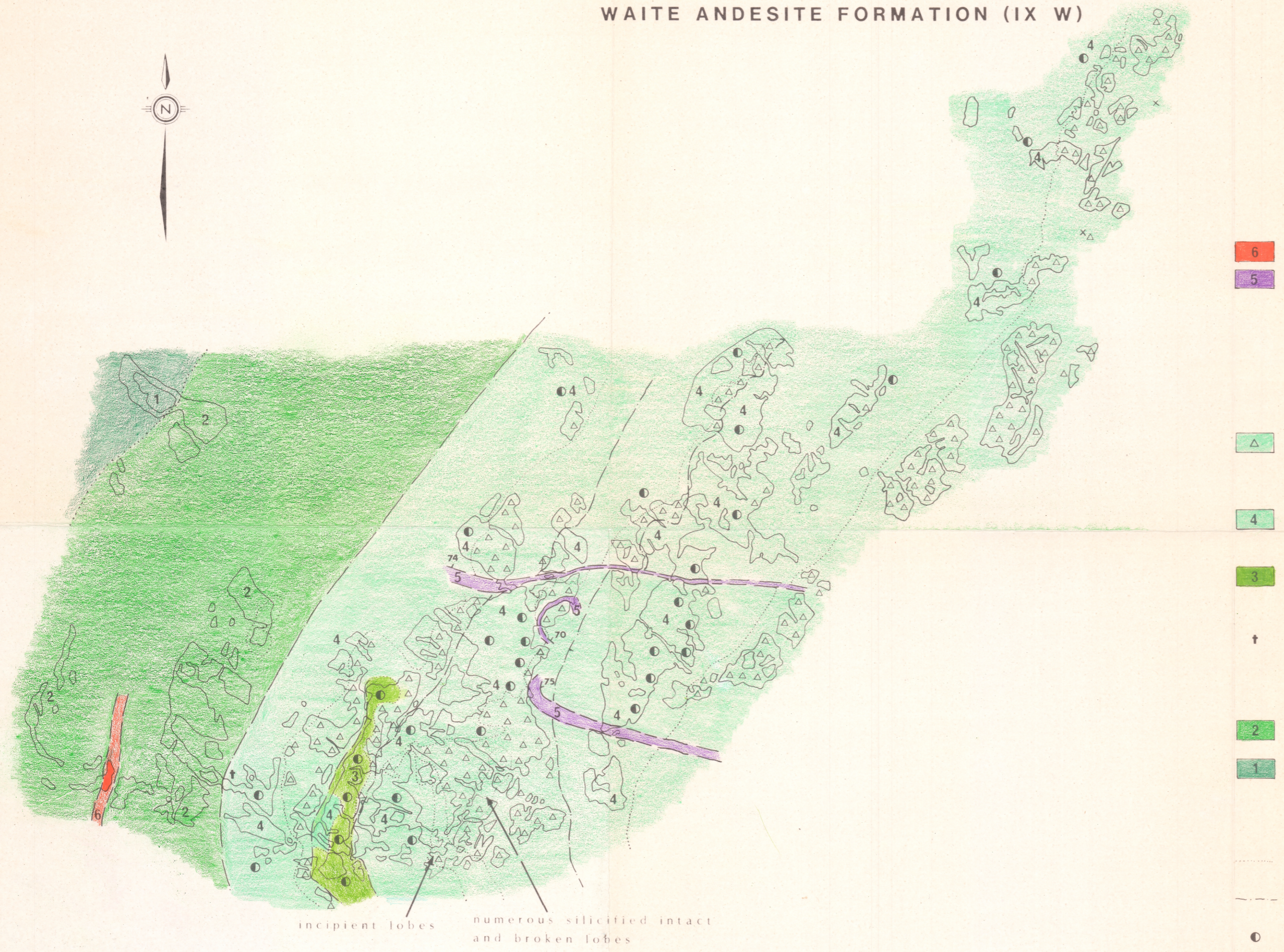
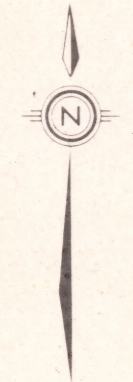


FIGURE 12.5

LEGEND

INTRUSIVE ROCKS

- 6 Feldspar porphyritic dacite
- 5 Fine-grained diorite/andesite

EXTRUSIVE ROCKS

- Waite Andesite Formation, Upper Member (IX W^u)
 - △ Silicified flow-top breccia, intact and broken amoeboid pillow-lobe forms, large quartz amygdules, fine-grained breccia and hyaloclastite matrix
 - 4 Silicified andesite massive lava, plagioclase phyric, large quartz amygdules, laminar jointing
 - 3 Silicified andesite pillow lava, plagioclase phyric, large quartz amygdules, concentric jointing
 - † Tuffaceous exhalite

(IX W)

- 2 Andesite pillow lava, pipe amygdules at margin,
- 1 Andesite massive lava, fine-grained

SYMBOLS

- facies contact
- - - flow contact
- epidote-quartz alteration

incipient lobes numerous silicified intact and broken lobes

