

## Southern Superior Province (Abitibi and Pontiac Subprovinces)

*Pierre Doucet  
James Moorhead  
Suzanne Côté*

### Introduction

The Abitibi and Pontiac subprovinces form the southern part of the Superior Province in Québec. The Abitibi Subprovince is the largest, one of the most studied, and among the richest Archean greenstone belts in the world. It comprises numerous granitoid intrusions and volcanic and sedimentary belts oriented roughly E-W (Figure 1C-1), dated between 2.75 and 2.67 Ga. The Abitibi belt is transected by several major reverse or normal faults oriented E-W to NW-SE, as well as by sinistral NE-trending and dextral SE-trending faults that dissect volcano-sedimentary domains into lozenge-shaped segments cored by intrusive rocks.

The Pontiac Subprovince is separated from the Abitibi Subprovince by the Cadillac-Larder Lake Break, a structure that extends east to west over a distance of more than 100 km in Québec and Ontario. The Pontiac Subprovince comprises granitoid intrusions and orthogneisses in its central part, along with detrital sedimentary rocks and paragneisses with a few volcanic sequences. The latter form ultramafic, mafic, and locally felsic assemblages in the southwestern part of the Pontiac. A few thin bands of mafic to ultramafic volcanic rocks are also present in the northern part of the subprovince.

The Abitibi Subprovince is world-renowned for the great number and high grade of its precious metal (Au-Ag) and polymetallic (Cu-Zn-Au-Ag and Cu-Au) ore deposits. A few metallic deposits, architectural stone quarries, and industrial mineral deposits (lime, quartz, kyanite, mica, and garnet) were also mined in the Pontiac Subprovince. Exploration and mining have made this territory one of the main mining regions in Québec for close to a century.

In 2005, we compiled 177 mineral exploration projects in the Abitibi and Pontiac subprovinces, compared to 198 in 2004. This represents an 11% decrease. The number of gold exploration projects stood at 116 (Table 1C-1), a slight drop of 11% compared to 2004. The number of exploration projects targeting polymetallic deposits or diamonds stood at 61 in 2005 (Table 1C-2), down 9% relative to the 67 projects reported in 2004. Figures 1C-1 to 1C-4 show the location of all exploration projects in the Abitibi and Pontiac subprovinces.

## Casa Berardi – Matagami Area

In this area, located in the northwesternmost part of the Abitibi Subprovince, we compiled 22 exploration projects in 2005, namely 9 gold projects and 13 polymetallic projects (Figures 1C-1 and 1C-2).

The Casa Berardi project (project 31) held by **Aurizon Mines Ltd** is located 130 km west-southwest of Matagami, in sedimentary rocks of the Taïbi Group. The former Casa Berardi East and West mines are both located near the Casa Berardi fault. Gold-bearing zones are generally associated with fine-grained pyrite and arsenopyrite in quartz veins, quartz-carbonate stringers, and sulphide-rich schists. In 2005, **Aurizon Mines Ltd** performed underground drilling and mine development work including construction of surface installations, sinking of a production shaft, and excavation of a service ramp and headings. Total probable reserves were estimated, as of September 2005, at 4.908 Mt grading 7.69 g/t Au. Commercial production is slated to begin at the end of 2006.

**Société d'exploration minière Vior Inc.** carried out a drilling campaign on its Douay and Douay West properties (project 51), located 60 km south of Matagami. On the Douay West deposit, several drillholes intersected near-surface gold zones, among which a 47.1-m interval at 3.0 g/t Au in drillhole D-112. Gold-bearing zones are associated with disseminated sulphides in strongly albitized, silicified, and carbonatized mafic to ultramafic lavas, sediments, gabbros, and alkaline dykes.

On its property enclosing the former Estrades mine (project P13), **Woodruff Capital Management Inc.** encountered several sections with interesting copper, zinc, silver, and gold grades. Drillhole EME-02 intersected 3.85 m grading 1.30% Cu, 0.23% Zn, 0.33 g/t Au, and 9.8 g/t Ag. **Cancor Mines Inc.** reported good results from a drill campaign on the Bonfortel property (project P39). Drillhole BON-05-01 yielded an assay of 2.36% Zn over 1.42 m. On the Kistabiche project (project P40), **Cancor Mines Inc.** and **SOQUEM INC.** completed a 10-hole drill program. A 2.70-m section in drillhole KIST-05-04 graded 0.25% Zn and 7.5 g/t Ag. On the Du Dôme-Matagami property (project P7), partners **Metco Resources Inc.** and **SOQUEM INC.** reported grades of 0.47% Zn and 0.03% Cu over 10.2 m in drillhole 1288-05-14.

## Lebel-sur-Quévillon – Desmaraisville Area

In 2005, the number of exploration projects recorded in this area, located in the east-central part of the Abitibi Subprovince, stood at 20, including 12 gold projects and 8 Cu-Zn or diamond projects (Figures 1C-1 and 1C-2). One producer, the Sleeping Giant (Au-Ag) mine, was in operation in this area.

## 1C

Property of **Cambior Inc.**, the Sleeping Giant mine (project 33) is located 70 km west of Lebel-sur-Quévillon. The lode gold deposit is characterized by high gold grades of up to 11 g/t Au. In December 2003, the shaft was deepened by 200 m to reach a total depth of 1,006 m, providing access to new gold zones 6, 7, 8, and 18. In 2005, development work to access these new ore zones was completed. Near Desmaraisville, **Halo Resources Ltd** and **Metanor Resources Inc.** completed an important underground drilling program at the former Bachelor gold mine (project 80), in order to define 841,591 tonnes of measured and indicated resources grading 7.79 g/t Au in the A, B, and Main zones.

About 120 km east of Lebel-sur-Quévillon, in the central part of the Urban-Barry belt, **Noront Resources Ltd** stripped an area of 800 m by 800 m on the Windfall Lake property (project 112) to expose a gold occurrence consisting of quartz-pyrite-ankerite-tourmaline veins. Drillholes intersected the gently-dipping Zone 27 composed of quartz-tourmaline-sulphide veins, which yielded high gold grades such as 23.4 g/t Au over 1.55 m in drillhole NOT-05-82, within a lower-grade halo. On the Windfall property (project 111) adjacent to the north, **Murgor Resources Inc.** and **Freewest Resources Canada Inc.** discovered, in drillholes, two gold-bearing shear zones, zone F-17, composed of silicified lenses and quartz-tourmaline-pyrite veins, and zone F-11, consisting of pyrite-magnetite-rich pockets and quartz veins. Best results include 15.97 g/t Au over 7.6 m in drillhole WIN-05-79 in zone F-17, and 11.91 g/t Au over 17.0 m in zone F-11 in drillhole WIN-05-30.

**Metco Resources Inc.** completed a drill program on the Mountain A (project P37) and Mountain B (project P38) properties located east of Lebel-sur-Quévillon. A drillhole targeting the north zone on the Mountain B property intersected 0.7 m grading 1.13% Cu.

### Chibougamau Area

In the Chibougamau mining camp, which forms the north-eastern tip of the Abitibi Subprovince, 26 exploration projects were tabulated in 2005, including 15 gold projects and 11 base metal projects (Figures 1C-1 and 1C-2). Two producers, the Joe Mann (Au-Ag) mine and the Copper Rand (Cu-Au-Ag) mine, were in operation in the Chibougamau area in 2005.

Mining operations began in March 2005 at the Copper Rand mine (project 101) and continued at the Joe Mann mine (project 75). On the Meston property (project 98), adjacent to the Joe Mann mine, **Campbell Resources Inc.** completed a drill program targeting gold-bearing structures.

In the Chibougamau area, **Woodruff Capital Management Inc.** tested a 14-km segment of the host sequence of the former Lemoine mine (project P24). Nine drillholes spaced along this prospective assemblage were completed and yielded

very promising results, among which drillhole LEM-47 which encountered 3 m grading 3.20% Zn and 0.31% Cu. **Campbell Resources Inc.** targeted the depth extension of ore zones at the Corner Bay deposit (project P23). Drillhole 05-92 intersected an impressive 16.10 m grading 9.27% Cu. Resource calculations were updated and the new estimate now stands at 1.3 Mt of measured and indicated resources grading 4.47% Cu, plus 869,000 tonnes of inferred resources grading 5.96% Cu, using a cut-off grade of 2% Cu. In the same area, **Novawest Resources Inc.** completed an important exploration campaign on the Chibougamau project (project P49), which included prospecting, geophysical surveys, surface stripping, and drilling on many showings. Drillhole NWM5-4 intersected 3.0 m grading 1.82% Cu, 19.8 g/t Ag, and 0.12 g/t Au.

On the Montviel property (project P36), located 45 km northwest of Miquelon, **NioGold Mining Corp.** sampled the Montviel alkaline Complex to assess its rare earth element potential. Sample no. 1039 yielded an assay of 1240 ppm P, 1540 ppm Ce, 890 ppm La, 417 ppm Nb, 536 ppm Nd, and 267 ppm Zr.

### Normétal – La Sarre – Amos Area

Our compilation indicates that 12 exploration projects, including 7 gold projects and 5 polymetallic projects, are located in the west-central part of the Abitibi Subprovince (Figures 1C-1 and 1C-2).

On the Despinassy project (project 48), located near the village of Despinassy 36 km northeast of Barraute, **Alto Ventures Ltd** and **Commander Resources Ltd** drill-tested the DAC gold deposit, which consists of four subparallel ore zones comprising quartz-calcite-albite-pyrite-gold veins hosted in deformed and biotite-altered mafic volcanic rocks. Mineralized intercepts yielded grades such as 4.53 g/t Au over 4.0 m for zone 2 in drillhole DES05-79.

**Woodruff Capital Management Inc.** conducted drill campaigns on its Landrienne (project P21) and Castagnier (project P18) properties.

### Rouyn-Noranda – Cadillac Area

The number of gold exploration projects compiled in the Rouyn-Noranda – Cadillac area stood at 29, whereas 10 projects targeting polymetallic deposits were reported (Figure 1C-3). Four mines were in operation in this area in 2005: the Mouska and Doyon (Au-Ag) gold mines, the LaRonde (Au-Ag-Zn-Cu) polymetallic mine, and the Bouchard-Hébert (Zn-Cu-Ag) mine. The latter, held by **Breakwater Resources Ltd** and located 20 km northeast of Rouyn-Noranda, ceased mining operations on February 20, 2005.

## 1C

In the Cadillac area, mining operations resumed at the Mouska mine, held by **Cambior Inc.** (project 21), in October 2004 after the internal shaft was deepened by 210 m to provide access to new ore zones and add three years to the mine life. At the Doyon mine (project 20), also held by **Cambior Inc.**, exploration drilling and development work was carried out. A 2.6-km-long exploration drift going east from level 14 at the Doyon mine is underway to reach the Westwood project (project 18). Exploration drillholes were completed from this drift in 2005. Eastward, on the contiguous Ellison and Bousquet properties (project 16), underground drilling by **Agnico-Eagle Mines Ltd** intersected gold mineralization within a large alteration zone and reported assays of 24.34 g/t Au over 2.8 m in drillhole D04-2803. A work program including sinking a shaft to 830 m depth, underground development, drilling, and metallurgical testing was launched by **Agnico-Eagle Mines Ltd** on its Lapa property (project 28) located 16 km west of Malartic. Shaft sinking commenced in March 2005. The main ore zone, known as the Contact Zone, lies along the interface between sheared and altered mafic and ultramafic lavas of the Piché Group and sedimentary rocks of the Cadillac Group, in the Cadillac Tectonic Zone. It consists of disseminated sulphides and quartz-sulphide veins hosted in biotite-sericite rich volcanic rocks. Probable reserves are estimated at 4.08 Mt at a grade of 8.91 g/t Au. West of Lapa, on the Wood-Pandora property (project 25), **Globex Mining Enterprises Inc.** and **Queenston Mining Inc.** intersected a talc-chlorite schist with visible gold, which assayed 8.51 g/t Au over 28 m in drillhole W05-09, and a unit of sheared and carbonatized argillite with minor pyrite and arsenopyrite, which graded 68.19 g/t Au over 1.5 m in drillhole W05-09. **Radisson Mining Resources Inc.** drill-tested its O'Brien and Kewagama properties (project 29), located 1 km north of Cadillac, to explore the eastward and depth extensions of quartz-native gold veins in the 36E zone, hosted in rocks of the Piché Group within the Cadillac Tectonic Zone. In drillhole KW05-11, a 10.50-m interval graded 1.3 g/t Au below existing infrastructure at the former Kewagama gold mine.

About 20 km east of Rouyn-Noranda on the Heva property (project 73), **Stellar Pacific Ventures Inc.** and **Vantex Resources Ltd** completed drillholes which intersected the A vein in the footwall of the Cadillac Tectonic Zone, in the vicinity of the former Heva Gold mine. Gold is associated with quartz stringers in metasedimentary rocks or talc-chlorite schists. Among the best intervals, drillhole H2005-02 intersected 9.25 m grading 2.28 g/t Au. On the Rouyn property (project 5), located 3 km south of Rouyn-Noranda, **Yorbeau Resources Inc.** drill-tested the Cinderella block straddling the Cadillac-Larder Lake Break. Drillhole 390 intersected a sulphide-rich gold-bearing zone grading 2.54 g/t Au over 10.7 m. On the Flavrian and COOF properties (project 59), located along the margin of the Flavrian pluton 15 km west of Rouyn-Noranda, **Alexis Minerals Corp.** and **Falconbridge Ltd** completed drillholes which intersected quartz-pyrite veins. Best results include 1.52 g/t Au over 9.1 m in drillhole FV-05-08 and 7.33 g/t Au over

0.6 m in drillhole FV-05-10. On the Lac Fortune West property (project 43) located 25 km west of Rouyn-Noranda, **Search-Gold Resources Inc.** drilled boreholes which encountered a near-surface gold-bearing zone in silicified and sericitized rocks cut by quartz-tourmaline-carbonate-pyrite veins. Best results include 2.3 m grading 7.0 g/t Au in drillhole LF-04-04. On the Dasserat-Galloway property (project 44), located 30 km west of Rouyn-Noranda near the former Galloway shaft, **Pro-Spect-Or Resources Inc.** carried out surface stripping and uncovered a new gold-bearing structure. It consists of a fault zone strongly altered to carbonate and silica and cut by quartz-carbonate veins. Channel samples yielded assays including 8.0 g/t Au over 1.0 m. On the Russian Kid property (project 42), located 36 km west of Rouyn-Noranda, **Mirabel Resources Inc.** and **Globex Mining Enterprises Inc.** proceeded with dewatering of the access ramp and rehabilitation of underground infrastructure. A drilling program is planned for 2006.

On the Fayolle property (project 1), located 35 km northeast of Rouyn-Noranda, **Typhoon Exploration Inc.** drillholes intersected ankeritized, hematized, and pyritized granodiorite dykes. Drillhole FA-05-15 encountered a high-grade zone near surface in Zone III, with an intercept grading 43.5 g/t Au over 25.1 m. **Normabec Resources Ltd**, **GéoNova Explorations Inc.**, and **SOQUEM INC.** completed a drilling program on the Pitt Gold property (project 58) located 35 km north of Rouyn-Noranda, near the Destor-Porcupine Fault. Several mineralized intercepts were reported, including a 1.5-m section grading 6.41 g/t Au in drillhole PG2005-03. Gold is typically associated with silicified zones containing very fine-grained pyrite and quartz stringers.

North of Rouyn-Noranda, joint venture partners **Falconbridge Ltd** and **Alexis Minerals Corp.** reported numerous impressive massive and stringer sulphide intercepts on the West Ansil project (project P52), including 3.57% Cu, 0.25% Zn, 0.52 g/t Au, and 7.72 g/t Ag over 52.70 m in drillhole AN-05-04. This discovery is located just 2 km southwest of the former Ansil mine. Additional drillholes are planned in early 2006 and the partners are evaluating the economic parameters of the deposit. **Agnico-Eagle Mines Ltd** continued exploration at depth and to the west in Zone 20 North on the LaRonde II project (project P6), from the exploration drift on level 215. The company also completed a feasibility study regarding development of the orebody. An internal shaft was chosen as the most cost-efficient option. The study is based on a production rate of 5,000 to 6,000 tonnes per day, with potential gold production of 300,000 ounces per year.

### Malartic – Senneterre – Val-d'Or Area

The number of projects reported in the Malartic–Senneterre–Val-d'Or area, which covers the southeastern part of the Abitibi Subprovince, stands at 48, including 39 gold projects and 9 projects targeting Cu-Zn occurrences (Figures 1C-1, 1C-2, and 1C-4). In

## 1C

this area in 2005, the Beaufor (Au-Ag) and Sigma (Au) mines were in operation, whereas the Louvicourt (Cu-Zn-Au-Ag) mine, property of **Aur Resources Inc.**, **Novicourt Inc.**, and **Teck Cominco Ltd** and located 25 km east of Val-d'Or, ceased operations on July 19, 2005.

In Malartic, **Osisko Exploration Ltd** conducted a drill program on the F zone at the former Canadian Malartic gold mine (project 64), in order to define near-surface gold resources to be mined by open pit. The gold-bearing F zone is characterized by the presence of disseminated pyrite in granodiorites with silica and potassic alteration and in surrounding metasedimentary rocks. Best results include 1.39 g/t Au over 142 m in drillhole CM05-673. On the East Amphi property (project 84) located 3 km west of Malartic, **Richmont Mines Inc.** continued development work and drilling in the A and B zones. A preliminary bulk sample of 6,500 tonnes of development ore was extracted and processed at the Camflo mill. The recovery grade was 3.42 g/t Au. A second bulk sample comprising 15,800 tonnes of ore from the B2 zone and 10,100 tonnes of development ore was extracted in the Fall of 2005. On the Camflo West property (project 85), located 5 km northeast of Malartic, **NioGold Mining Corp.** conducted a prospecting campaign which led to the discovery of a new deformation zone characterized by chlorite and talc-chlorite schists injected with porphyry dykes and quartz veins. Grab samples yielded assays reaching 2.62 g/t Au.

On its Midway project (project 56), located 16 km west of Val-d'Or along the Cadillac Tectonic Zone, **Northern Star Mining Corp.** proceeded with the raising of a new head frame and dewatering of the 823-m shaft at the former Malartic Goldfields mine, which produced more than 2 million ounces of gold between 1939 and 1960. A surface and underground drilling program is planned for 2006. Since 2003, surface drillholes have defined at least ten gold-bearing zones in pyrite-rich mafic lenses. On the Vassan property (project 114), located 8 km northwest of Val-d'Or, **Stellar Pacific Ventures Inc.** drill-tested the pyrrhotite-pyrite-chalcopyrite-rich Hamelin zone. Mineralized intercepts include 1.1 m grading 24.50 g/t Au in drillhole V2005-04. At the Kiena mine complex (project 51), located 9 km west of Val-d'Or, **Wesdome Gold Mines Inc.** continued its drilling program as well as development work in two exploration drifts. The first drift at the Kiena mine trends southeast from level 33 (330 m below surface) and is to provide access to the Shawkey and Martin zones. The latter contains at least two sets of parallel veins, which yielded a drill intercept of 5.5 m grading 3.26 g/t Au (drillhole 3845). The second drift, going north from level 52 (520 m below surface), has already reached the VC and North zones, and is heading towards the 388 zone and the Wesdome property, located further north. The VC zone consists of three lenses of silicified and albitized breccia hosted in basalt flows. Drill intercepts include 9.8 g/t Au over 8.08 m (true thickness) in lens VC3 (drillhole U-3769). The 388 zone contains gold-bearing quartz veins in albitized

basalts near the contact with a granodiorite-diorite sill. Drill intercepts include 6.04 g/t Au over 7.0 m (true thickness) in drillhole 3836.

In 2004-2005 on the Goldex property (project 55), located in the western part of the city of Val-d'Or, **Agnico-Eagle Mines Ltd** conducted an exploration and development program to increase the level of confidence in the probable reserve estimate, which currently stands at 20.09 Mt at a grade of 2.4 g/t Au. Based on the positive results of this program, **Agnico-Eagle Mines Ltd** announced in July 2005 the start-up of construction for this new mine, slated to begin production in 2008. The Goldex Extension ore deposit consists of a stockwork of quartz-tourmaline-pyrite veins in albite-pyrite-altered wall rocks, hosted in a quartz diorite sill locally altered to sericite and chlorite. In 2004, **Century Mining Corp.** acquired the Sigma-Lamaque mining complex (project 10) from McWatters Mining Inc. Operations at the mine had been suspended in October 2003. A reverse-circulation drilling program totaling 12,000 m, designed to upgrade gold resources in the open pit, was completed in February 2005. Based on the results, commercial production commenced in June. On the Lamaque property (project 11), adjacent to the south of the open pit, **Century Mining Corp.** encountered near surface gold-bearing intervals, in drillholes testing the West Plug and the extension of vein #1 in the Main Plug.

On the Aurbel property (project 9), located 10 km east of Val-d'Or, **Alexis Minerals Corp.** announced that inferred mineral resources at the Lac Herbin deposit were estimated at 1,072,681 tonnes grading 7.26 g/t Au. Seven mineralized zones consisting of gold-bearing quartz-pyrite veins are hosted in shear zones cross-cutting the Bourlamaque Batholith. Excavation of an exploration ramp began in September 2005. An underground definition drilling program is planned for early 2006. At the Beaufor mine (project 93), located 19 km east of Val-d'Or, **Richmont Mines Inc.** carried out development work as well as definition and exploration drilling. Ramp development was undertaken in order to access the depth extension of Zone C. Gold ore zones are associated with quartz-pyrite veins cross-cutting the Bourlamaque Batholith.

From December 2004 to July 2005 on the Croinor property (project 94), located 70 km east of Val-d'Or, **South-Malartic Exploration Inc.** extracted a 24,363-tonne sample of gold ore from the West Pit, from which 3,834 ounces of gold were recovered at the Camflo mill in Malartic, for a recovery grade of 5.00 g/t Au. Gold ore zones consist of quartz veins and their altered pyrite-rich wall rocks, hosted in a diorite sill. Measured and indicated resources are estimated at 1.43 Mt grading 6.31 g/t Au, using a cut-off grade of 2.0 g/t Au. On the Jolin property (project 30), located 16 km west of Senneterre, **Abitex Resources Inc.** drill-tested the northward extension of the Main Vein and reported several gold-bearing intervals, such as 1.2 m grading 5.65 g/t Au in drillhole J-05-03. On the Courville

# 1C

property (project 40), located 15 km west of Senneterre, **Perthco Resources Inc.** carried out surface stripping and drilling on the Thibodeau intrusive, which consists of sericitized leucotonalite with disseminated pyrite cut by a stockwork of anastomosing subhorizontal quartz-sulphide veins. A 12,537-tonne bulk sample was excavated from the Thibodeau intrusive and shipped to the Camflo mill near Malartic. A total of 786 ounces of gold were recovered, indicating a recovery grade of 1.95 g/t Au. Shallow drillholes testing Zone 1 in the intrusive intersected low-grade mineralization over large widths, such as 0.86 g/t Au over 64.4 m in drillhole PRO-05-27.

On the Louvex project (project P53) east of Val-d'Or, located just 1 km south-west of the former Louvicourt mine, **Alexis Minerals Corp.** in partnership with **Novicourt Inc.** intersected 800 m of chlorite-sericite alteration with stringer sulphides in drillhole 17315-01E/F. A 13.5-m interval within this wider section graded 1.14% Cu. **Alexis Minerals Corp.** conducted a drilling campaign on the Dunraine property (project P31). Drillhole 17517-03 yielded an assay of 1.57% Cu over 3.7 m.

**Kinbauri Gold Corp.** acquired the Fiedmont PGE property (project P14) and proceeded with sampling of the mafic and ultramafic intrusive complex located near Barraute. Best results from samples collected in three showings are 1.52 g/t Pt and 4.21 g/t Pd over 1 m. The company is planning a drilling program to test the depth extension of these occurrences.

## Témiscamingue Region

In the Témiscamingue region, which includes the entire Pontiac Subprovince, 10 projects were reported, among which 5 gold projects and 5 projects targeting base metal or diamond deposits (Figures 1C-1 and 1C-2).

On the Guillet project (project 69), located about 5 km east of Belleterre, **Vantex Resources Ltd** extracted a bulk sample of about 3,000 tonnes on the A zone at the Lake Expanse showing, which consists of gold-bearing quartz-sulphide veins. The company also completed shallow drillholes. Thirty-six samples randomly collected from the bulk sample yielded an average grade of 5.4 g/t Au. A larger bulk sampling program is planned for 2006. Drillholes also tested the depth extension of the A, AB, and C zones. On the Témiscamingue property (project 70) located 5 km north of Belleterre, joint venture partners **Fieldex Exploration Inc.** and **FNX Mining Company Inc.** intersected in drillhole the Hosking zone, composed of quartz veins and sulphides hosted in deformed and altered gabbro. A 12.3-m section graded 1.3 g/t Au.

They also conducted an important exploration campaign including magnetic and electromagnetic geophysical surveys as well as diamond drillholes on their Témiscamingue property (project P51).

## Opportunities for Exploration

### BASE METALS

It has been known for several decades now that volcanogenic massive sulphide (VMS) deposits generally occur clustered within a relatively small area of a few tens of square kilometres. The Noranda and Matagami mining camps are two notable examples in the Abitibi. Four significant Cu-Zn discoveries announced in 2005 add proof that the mineral potential near former mines remains significant.

1) The discovery of massive and stringer sulphides (PY-CP) on the West Ansil project (project P52) by **Alexis Minerals Corp.** and **Falconbridge Ltd**, which is located only 2 km southwest of the former Ansil mine, suggests that the Noranda central camp still offers significant VMS potential. The partners also indicated the presence of several other targets near the discovery.

2) The presence of an important stringer sulphide (CP-PY) zone accompanied by intense chlorite and sericite alteration in drillholes on the Louvex property (project P53), located just 1 km south-west of the Louvicourt mine, outlines the potential of this area east of Val-d'Or. Joint venture partners **Alexis Minerals Corp.** and **Novicourt Inc.** indicated that additional drillholes are planned to follow-up on these results.

3) In the Chibougamau area, holes drilled in 2005 by **Woodruff Capital Management** about 3 km southwest of the former Lemoine mine (project P24) along the same stratigraphic horizon, intersected a new stringer sulphide zone characterized by intense chlorite alteration. Another drillhole located 4.6 km east of the former mine also intersected 250 m of zinc and copper-rich stringers. The company controls a 17-km-long segment of the favourable Lemoine horizon, and has recently acquired an interest over an 18-km segment of the Scott Lake horizon, interpreted as the folded equivalent of the Lemoine stratigraphy, located 20 km west of Chibougamau.

4) Also in the Chibougamau area, **Campbell Resources Inc.** obtained very good results from a deep-drilling program on the Corner Bay property (project P23), located along the southern limb of the Lac Doré Complex. These drillholes tested the depth extension of the deposit (measured resources of 642,000 metric tonnes grading 5.19% Cu and inferred resources of 249,000 metric tonnes grading 5.62% Cu, using a cut-off grade of 3% Cu) and preliminary results are very encouraging.

The results obtained in these four areas outline the mineral potential existing in the shadow of past-producing mines and thus opens up exploration opportunities in the immediate vicinity of other VMS deposits in the Abitibi Subprovince.

# 1C

## PRECIOUS METALS

Following recent discoveries along the Cadillac Tectonic Zone (CTZ), the Cadillac mining camp, located midway between Rouyn-Noranda and Val-d'Or, has become a major hotspot for gold exploration in Québec. Doucet and Lafrance (2005) conducted a study of the deep-seated gold potential of the Cadillac mining camp, which includes a description and historical overview of gold deposits and recent discoveries along the CTZ.

The most significant recent discovery took place in 2002 at the Lapa (Au-Ag) deposit located 7 km east of Cadillac and held by **Agnico-Eagle Mines Ltd.** Probable reserves are estimated at 4.08 Mt grading 8.91 g/t Au, for a total of 1.2 million ounces of gold. The ore zone has been traced over a strike length of 430 m and a vertical distance of 650 m, to 1150 m depth. It forms a horizon known as the Contact Zone, hosted in a longitudinal shear zone within mafic-ultramafic rocks of the Piché Group


in contact with sedimentary rocks of the Cadillac Group. The Contact Zone contains sericite and biotite alteration, quartz veins and disseminated arsenopyrite, stibnite, pyrrhotite, and visible gold. At depth, the Contact Zone is characterized by a lower sulphide content, a higher frequency of coarse gold, and a more intense silicification. The sinking of a 823 m depth exploration shaft, undertaken in the fall 2004, should be completed at the end of 2006.

Following the discovery of the Lapa deposit, adjacent properties to the west were drill-tested by **Queenston Mining Inc.** and **Globex Mining Enterprises Inc.** and gold-bearing zones were intersected along the inferred extension of the Contact Zone. The eastward extension of the Contact Zone near the Maritime Cadillac gold deposit has not been tested at depth. To the west and east of the Lapa deposit, the depth extension of small gold deposits located along the CTZ have seen very little exploration (Doucet and Lafrance, 2005).

### Geological legend

#### PALEOZOIC AND PROTEROZOIC


##### Sedimentary rocks

 Fossiliferous dolomite, sandstones, conglomerates, arenite, stromatolite

#### ARCHEAN (2.8 to 2.6 billion years)


##### Metamorphic rocks

 Gneisses (derived from plutonic rocks)

 Schists and paragneisses (derived from sedimentary rocks)

##### Plutonic rocks

 Syn- to post-tectonic tonalite, granite and gabbro

 Synvolcanic tonalite, granite and gabbro


 Anorthositic gabbro

##### Sedimentary rocks

 Sandstones, conglomerates and mudrocks

##### Volcanic rocks

 Predominance of rhyolites and pyroclastic rocks

 Predominance of basalts and andesites, rare komatiites

 Komatiites to basalts

#### --- LIMITS OF SUBDIVISIONS AS DEFINED IN THE TEXT

C-B - M: Casa-Berardi - Matagami

LsQ - D: Lebel-sur-Quévillon - Desmaraisville

R-N - C: Rouyn-Noranda - Cadillac

N - L S - A: Normétal - La Sarre - Amos

M - S - V-d'Or: Malartic - Senneterre - Val-d'Or

C: Chibougamau

T: Témiscamingue

 Mines

 Gold projects

 Polymetallic projects

 Regional faults

**Figure 1C-1.** Geological legend of maps of the Abitibi and Pontiac subprovinces (Figures 1C-1 and 1C-2).

# 1C

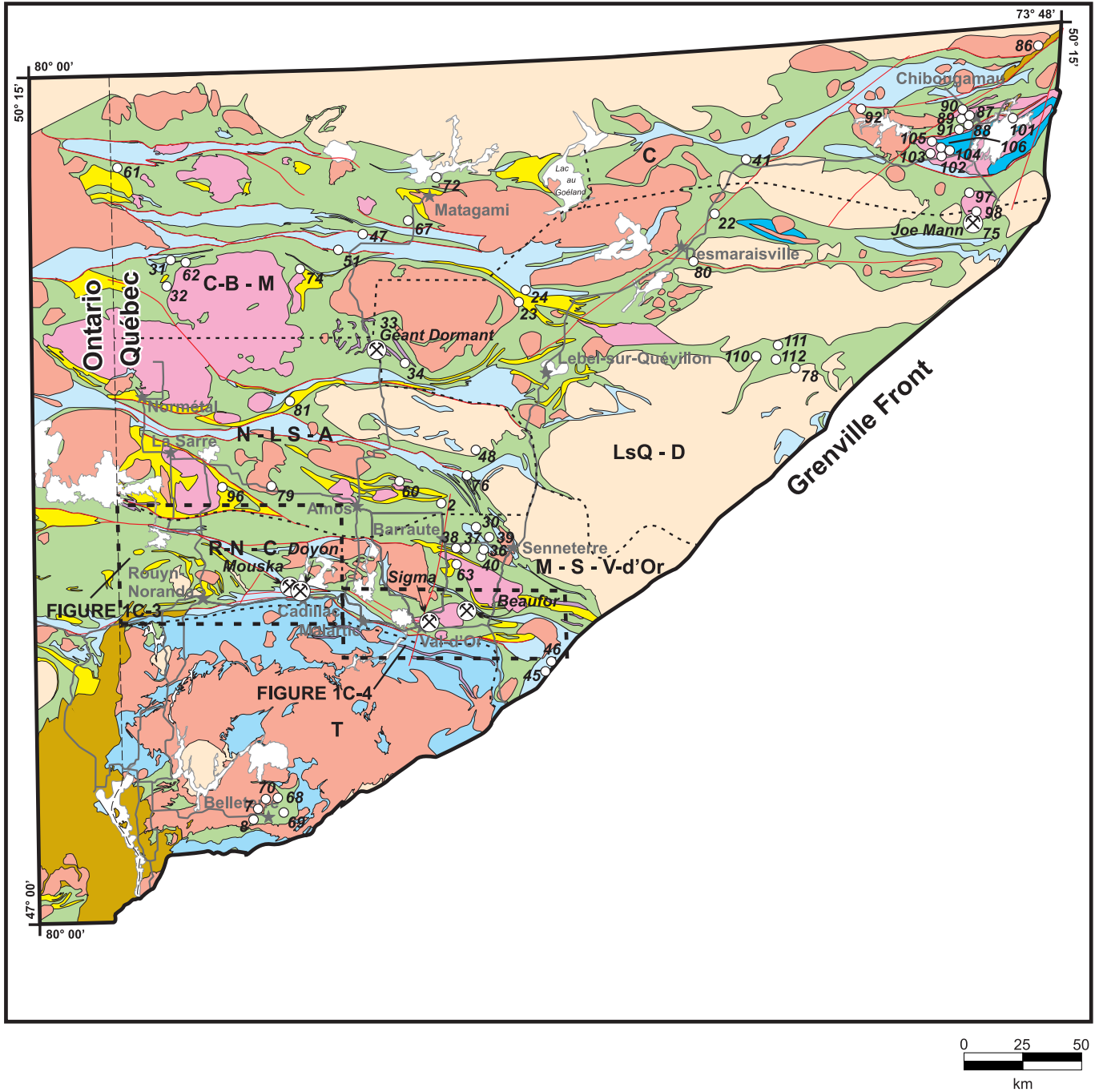
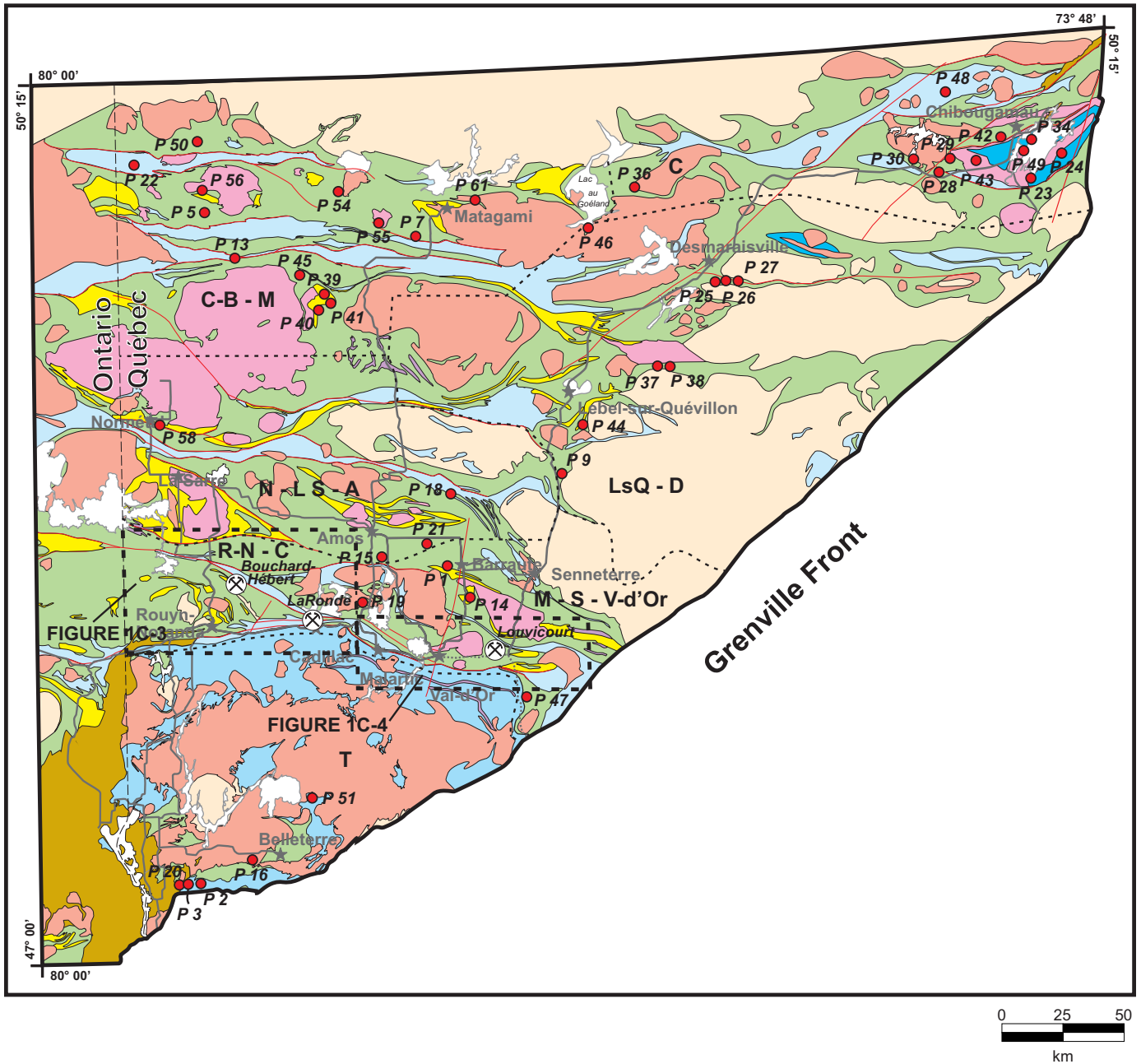


Figure 1C-1. Exploration projects for gold in the Abitibi and Pontiac subprovinces for 2005. Modified from Hocq and Verpaelst (1994).

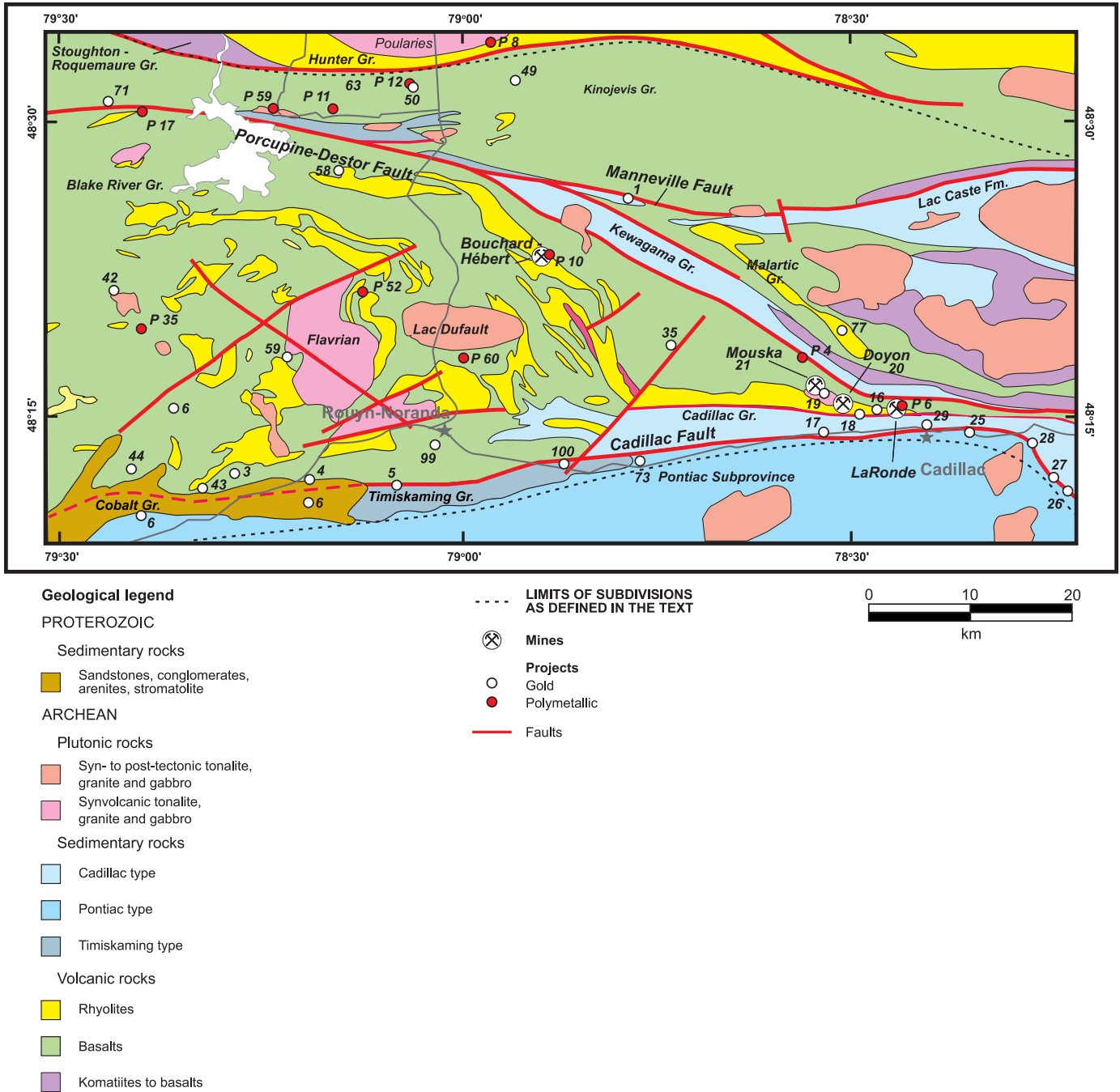
# 1C



**Figure 1C-2.** Exploration projects for base metals in the Abitibi and Pontiac subprovinces for 2005. Modified from Hocq and Verpaelst (1994). (See the legend on page 20)

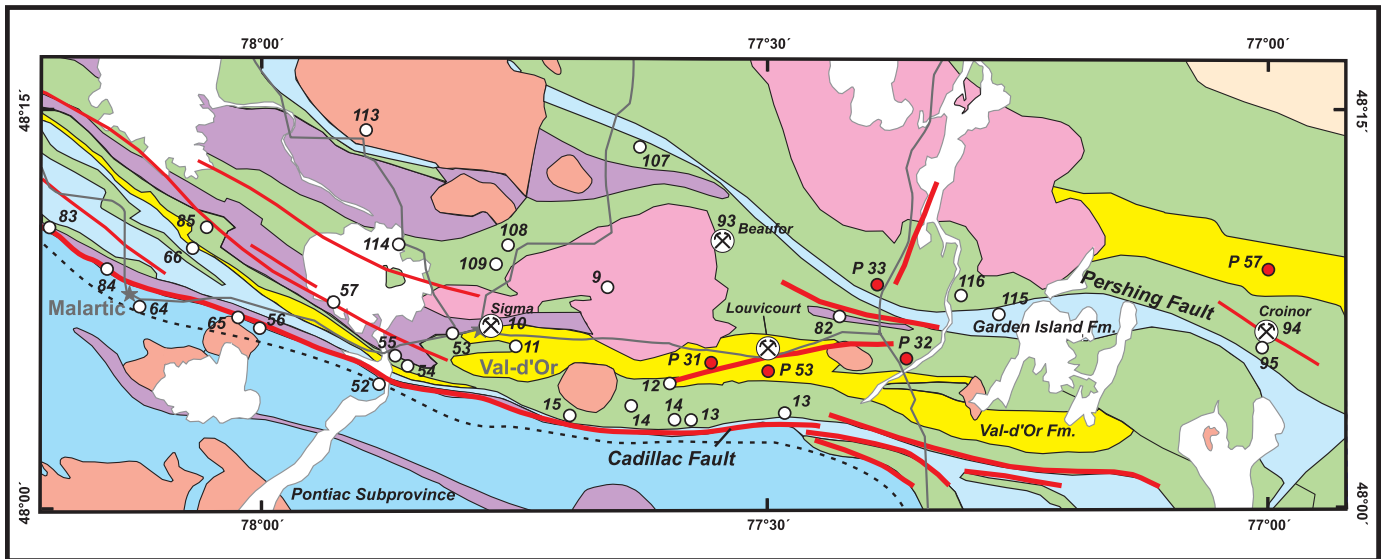


# 1C



**Figure 1C-3.** Exploration projects and mines in the Rouyn-Noranda–Cadillac area for 2005. Modified from Avramtchev and Label-Drolet (1981) and Couture (1991).

# 1C



### Geological legend

#### ARCHEAN

##### Plutonic rocks

- Syn- to post-tectonic tonalite, granite and gabbro
- Synvolcanic tonalite, granite and gabbro

##### Metamorphic rocks

- Gneisses (derived from plutonic rocks)

##### Sedimentary rocks

- Cadillac type
- Pontiac type

##### Volcanic rocks

- Rhyolites
- Basalts
- Komatiites to basalts

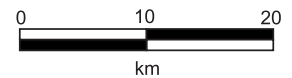
--- LIMITS OF SUBDIVISIONS AS DEFINED IN THE TEXT

⊗ Mines

○ Projects

● Polymetallic

— Faults



**Figure 1C-4.** Exploration projects and mines in the Malartic–Val-d’Or area for 2005. Modified from Avramtchev and Lebel-Drolet (1981) and Couture (1991).

TABLE 1C-1 - Exploration projects for gold in the Abitibi and Pontiac subprovinces in 2005.

Nos.	TOWNSHIPS	Fig.	NTS	COMPANIES / PROSPECTORS	PROJECTS	SUBSTANCES	WORKS <sup>(1)</sup>
1	Aiguebelle, Clérycy, Destor	1C-3	32 D/07	Iyphoon Exploration Inc.	Fayolle	Au	D(30:8832), Gs(r), TE
2	Barraute, Carpentier	1C-1	32 C/12	Phoenix Matachewan Mines Inc.	Swanson	Au, base metals	D(4:635), GpEl
3	Beauchastel	1C-3	32 D/03	Richmont Mines Inc.	Francoeur	Au	D(1:155)
4	Beauchastel	1C-3	32 D/03	Richmont Mines Inc.	Wasamac	Au	D(1:375)
5	Beauchastel	1C-3	32 D/03	Yorbeau Resources Inc.	Rouyn	Au	D(11:3743)
6	Beauchastel, Dasserat, Rouyn	1C-3	32 D/03	Cadillac West Explorations Inc. / Resource Finance & Investment Ltd	Cadillac West Gold	Au	D(7:2496)
7	Blondeau	1C-1	31 M/07	SearchGold Resources Inc.	Lac Chevrier	Au	D(?:?)
8	Blondeau, Guillet	1C-1	31 M/07	NioGold Mining Corp.	Blondeau-Guillet	Au, Cu, Zn, Ag	G, Gs(sl), Pr, S, TE
9	<b>Bourlamaque</b>	<b>1C-4</b>	<b>32 C/04</b>	<b>Alexis Minerals Corp.</b>	<b>Lac Herbin</b>	<b>Au</b>	<b>D(11:1245), FM, TE</b>
10	Bourlamaque	1C-4	32 C/04	Century Mining Corp.	Mine Sigma-Lamaque	Au	D(?:12 000)
11	Bourlamaque	1C-4	32 C/04	Century Mining Corp.	Lamaque	Au	D(?:?)
12	Bourlamaque, Louvicourt	1C-4	32 C/03	South-Malartic Exploration Inc. / Cambior Inc.	Iex-Sol	Au	D(5:1188)
13	Bourlamaque, Louvicourt	1C-4	32 C/03, 04	Cambior Inc.	Akasaba - Bloc Sud	Au	D(9:3331), CpEl, GpMa
14	Bourlamaque, Louvicourt	1C-4	32 C/03, 04	Cambior Inc. / Aur Resources Inc.	Valdora-Annamaque	Au	D(10:2571)
15	Bourlamaque, Louvicourt	1C-4	32 C/03, 04	Alexis Minerals Corp.	Groupe Cadillac	Au, Ag, Cu, Zn	D(?:?)
16	Bousquet	1C-3	32 D/01, 02, 07, 08	Agnico-Eagle Mines Ltd	Ellison	Au, Ag, Cu, Zn	D(1:361)
17	Bousquet	1C-3	32 D/02	Agnico-Eagle Mines Ltd	Nongold	Au, Ag, Cu, Zn	D(1:754)
18	Bousquet	1C-3	32 D/02	Cambior Inc.	Westwood-Warrenmac	Au	D(8:6303), CpEm(b), Gs(r)
19	Bousquet	1C-3	32 D/02	Cambior Inc.	Mouska	Au	D(2:3016), CpEm(b), Gs(r)
20	Bousquet	1C-3	32 D/02	Cambior Inc.	Mine Doyon	Au, Ag	D(651:61 956), G, CpEm(b), T
21	Bousquet	1C-3	32 D/02	Cambior Inc.	Mine Mouska	Au, Ag	D(190:37 256)
22	Boyvinet	1C-1	32 F/09, 32 G/12	NioGold Mining Corp.	Boyvinet	Au	D(5:443)
23	Bruneau, Desjardins	1C-1	32 F/06	Stratoco Resources Inc. / Géonova Explorations Inc.	Cameron	Au	D(5:1300)
24	Bruneau, Desjardins	1C-1	32 F/06	Stratoco Resources Inc. / Géonova Explorations Inc.	Discovery	Au	D(4:1965), G, Rsi
25	Cadillac	1C-3	32 D/01	Globex Mining Entreprises Inc. / Queenston Mining Inc.	Wood-Pandora	Au	D(6:?)

TABLE 1C-1 - Exploration projects for gold in the Abitibi and Pontiac subprovinces in 2005.

Nos.	TOWNSHIPS	Fig.	NTS	COMPANIES / PROSPECTORS	PROJECTS	SUBSTANCES	WORKS <sup>(1)</sup>
26	Cadillac	1C-3	32 D/01	Agnico-Eagle Mines Ltd	Chibex Sud	Au	D(6:3688)
27	Cadillac	1C-3	32 D/01	Agnico-Eagle Mines Ltd	Chibex Nord	Au	D(10:4145)
28	<b>Cadillac</b>	<b>1C-3</b>	<b>32 D/01</b>	<b>Agnico-Eagle Mines Ltd</b>	<b>Lapa</b>	<b>Au</b>	<b>TE</b>
29	Cadillac	1C-3	32 D/01	Radisson Mining Resources Inc.	O'Brian - Kewagama	Au	D(5:3693)
30	Carpentier	1C-1	32 C/05	Abitex Resources Inc.	Jolin	Au	D(7:1278)
31	<b>Casa Berardi, Dieppe, Récher, Raymond, Puiseaux</b>	<b>1C-1</b>	<b>32 E/10, 11</b>	<b>Aurizon Mines Ltd</b>	<b>Casa Berardi</b>	<b>Au</b>	<b>D(?:19 071), GpEl, Gs(sl, h)</b>
32	Casa Berardi, Laberge	1C-1	32 E/06,11	Cambior Inc. / Cancor Mines Inc.	Gémini-Turgeon	Au, Cu, Zn	D(11:4198), GpEl(g), GpEm(b), GpMt(g), Gs(r), TE
33	Chaste	1C-1	32 F/04	Cambior Inc.	Mine Céant Dormant	Au	D(?:?)
34	Chaste, Glandelet	1C-1	32 E/01, 32 F/04	Cambior Inc. / Aurizon Mines Ltd	Dormex	Au	D(8:3181), GpEl(g), GpMa(g)
35	Cléricy	1C-3	32 D/07	Alexis Minerals Corp. / Falconbridge Ltd	Noralex - Au	Au	D(?:?)
36	Courville	1C-1	32 C/06	South-Malartic Exploration Inc.	Belcourt	Au	GpEl, GpMa
37	Courville	1C-1	32 C/05	Golden Valley Mines Ltd	Perestroïka	Au	GpEl, GpMa
38	Courville	1C-1	32 C/05	Golden Valley Mines Ltd	Perestroïka West	Au	GpEl, GpMa
39	Courville	1C-1	32 C/06	M. Ouellet	Ouellet	Au, Ag	T
40	<b>Courville</b>	<b>1C-1</b>	<b>32 C/06</b>	<b>Pershimco Resources Inc.</b>	<b>Courville</b>	<b>Au</b>	<b>B(12540:1,95), D(14:1084)</b>
41	Currie	1C-1	32 F/07	Mirabel Resources Inc.	Lac Rose	Au	D(?:400), T
42	Dasserat	1C-3	32 D/06	Mirabel Resources Inc. / Globex Mining Enterprises Inc.	Russian Kid	Au	TE
43	Dasserat	1C-3	32 D/03	SearchGold Resources Inc.	Lac Fortune Ouest	Au	D(?:?)
44	Dasserat	1C-3	32 D/03	Pro-Spect-Or Resources Inc.	Dasserat-Galloway	Au, Cu	Pr, S, T
45	Denain	1C-1	31 N/14	Exploration Nid'Or (2000) Inc	Denain	Au	S, T
46	Denain	1C-1	31 N/14	Mirabel Resources Inc.	Denain	Au	D(?:2300), T
47	Desmazures	1C-1	32 E/09	Cancor Mines Inc.	Allard	Au, Ag	GpEl, GpMa
48	Despinassy	1C-1	32 C/11, 14	Alto Ventures Ltd / Commander Resources Ltd	Despinassy	Au	D(20:5307), GpMa
49	Destor	1C-3	32 D/10	Golden Valley Mines Ltd	Sea Serpent	Au	GpEl, GpMa
50	Destor	1C-3	32 D/11	Golden Valley Mines Ltd	Double Trouble	Au	D(4:346), GpEl, GpMa, Pr
51	Douay	1C-1	32 E/09	Société d'Exploration minière Vior Inc.	Douay Ouest	Au	D(14:3384), FM, Re
52	Dubuisson	1C-4	32 C/04	Golden Valley Mines Ltd	Lac Lemoyne	Au	GpEl, GpMa
53	Dubuisson	1C-4	32 C/04	Metanor Resources Inc.	Dubuisson	Au, Cu	D(1:490), GpEl(b,g), GpEm, GpGr

TABLE 1C-1 - Exploration projects for gold in the Abitibi and Pontiac subprovinces in 2005.

Nos.	TOWNSHIPS	Fig.	NTS	COMPANIES / PROSPECTORS	PROJECTS	SUBSTANCES	WORKS <sup>(1)</sup>
54	Dubuisson	1C-4	32 C/04	Agnico-Eagle Mines Ltd	Bigué	Au	D(2:697), M
55	Dubuisson	1C-4	32 D/01	Agnico-Eagle Mines Ltd	Goldex	Au	M
56	Dubuisson	1C-4	32 C/04	Northern Star Mining Corp.	Midway	Au	TE, M
57	Dubuisson	1C-4	32 C/04	Wesdome Gold Mines Inc.	Kiena	Au	D(131:?) , S, TE
58	Duparquet	1C-3	32 D/06	Normbec Mining Resources Ltd / GéoNova Explorations inc. / SOQUEM INC.	Pitt Gold	Au	D(17:9324), Te
59	Duprat	1C-3	32 D/06	Alexis Minerals Corp. / Falconbridge Ltd	Flavrian, COOF	Au, Cu	D(12:4084), G, Gs(r)
60	Duvernay	1C-1	32 C/12	Ressources d'Arianne inc.	Standard Gold	Au	D(? :1000), Pr, T
61	Enjalran, Massicotte	1C-1	32 E/13, 14	Stratabound Minerals Corp.	Enja	Au, Ag, Cu, Zn	GpMa, Rsi, TE
62	Estrées	1C-1	32 F/10	Cambior Inc. / Canley Development Inc.	Estrées-Caribou	Au, Cu, Zn	D(6:2151), Pg
63	Fiedmont	1C-1	32 C/05	Gianor Mineral Inc.	Rhyolite	Au	Pr, T
64	Fournière	1C-4	32 D/01	Osisko Exploration Ltd	Canadian Malartic	Au	D(25:?) , G, S
65	Fournière	1C-4	32 D/01	Cambior Inc.	Piché	Au	D(3:1769)
66	Fournière, Malartic	1C-4	32 D/01	Richmont Mines Inc.	Camflo N.O.	Au	D(3:881)
67	Galinée	1C-1	32 F/12	Cambior Inc.	Galinée-Newmont	Au, base metals	D(6:1960), CpEl(g), GpEm(b), CpMag, Gs(r), TE
68	Guillet	1C-1	31 M/07	Exploration Nid'Or (2000) Inc.	Lac Thibeault	Au	S, T
69	Guillet	1C-1	31 M/07	Vantex Resources Ltd	Guillet - Lake Expense	Au	B(3000:5,4), D(? :?), Gs, S, T, TE
70	Guillet	1C-1	31 M/07	FNX Mining Company Inc. / Exploration Fieldex Inc.	Témiscamingue	Au, Zn, Cu	D(14:3000)
71	Hébécourt	1C-3	32 D/11	Cambior Inc.	Porcupine	Au	D(1:1122), CpEl, GpMt(g)
72	Isle-Dieu	1C-1	32 F/12	Northern Mining Explorations Ltd	Isle-Dieu	Au, base metals	GpEm, TE
73	Joannès	1C-3	32 D/02	Stellar Pacific Ventures Inc. / Vantex Resources Ltd	Héva	Au	D(10:2500)
74	Joutel	1C-1	32 E/09	Agnico-Eagle Mines Ltd	Joutel	Au	D(3:628), GpEm
75	La Dauversière	1C-1	32 G/08, 09	Campbell Resources Inc.	Mine Joe Mann	Au, Ag, Cu	D(? :?)
76	La Morandière, Rochebaucourt	1C-1	32 C/11, 12	Cambior Inc.	Morancourt	Au	TE
77	La Pause	1C-3	32 D/04, 08	Britannica Resources Corp.	Chassignole	Au, Cu	Pr
78	Lacroix	1C-1	32 G/03	J. Descarreaux et Ass. Ltée	Lacroix	Au	D(3:435), GpEl
79	Launay	1C-1	32 D/10	Melkior Resources Inc.	Launay	Au	G, Gs(h), GpMa, Pr
80	Le Sueur	1C-1	32 F/08, 09	Metanor Resources Inc. / Halo Resources Ltd	Bachelor	Au	D(80:19 802), GpEl, TE

TABLE 1C-1 - Exploration projects for gold in the Abitibi and Pontiac subprovinces in 2005.

Nos.	TOWNSHIPS	Fig.	NTS	COMPANIES / PROSPECTORS	PROJECTS	SUBSTANCES	WORKS <sup>(1)</sup>
81	Ligneris	1C-1	32 D/15	Globex Mining Entreprises Inc. / Queenston Mining Inc.	Tut	Au	D(?:?)
82	Louvicourt	1C-4	32 C/03, 04	Louvem Mines Inc.	Monique	Au	D(1:275)
83	Malartic	1C-4	32 D/01	Agnico-Eagle Mines Ltd	Amphi Nord	Au	D(9:2542)
84	<b>Malartic</b>	<b>1C-4</b>	<b>32 D/01</b>	<b>Richmont Mines Inc.</b>	<b>Division East Amphi</b>	<b>Au</b>	<b>B(6500:3,42), D(?:18 648), Re, TE</b>
85	Malartic, Fournière	1C-4	32 D/01	NioGold Mining Corp.	Camflo West	Au	Gp, Gs(sl), Pg, S, I, TE
86	McCorkill	1C-1	32 G/16, 32 H/13, 32 I/04, 32 J/01	Iyphoon Exploration Inc.	Monexco	Au	Gs(sl)
87	McKenzie	1C-1	32 G/16	SOQUEM INC / Itamineraque Resources Inc.	Brosman (1230)	Au, Cu	D(6:1797)
88	McKenzie	1C-1	32 G/16	SOQUEM INC / Itamineraque Resources Inc.	Gilman (1291)	Au, Cu	D(1:240)
89	McKenzie	1C-1	32 G/16	SOQUEM INC / Itamineraque Resources Inc.	McKenzie (4581)	Au, Cu	D(2:650)
90	McKenzie	1C-1	32 G/16	SOQUEM INC / Itamineraque Resources Inc.	MOP II (1206)	Au, Cu	D(4:1330)
91	McKenzie, Scott	1C-1	32 G/16	SOQUEM INC / Itamineraque Resources Inc.	David (1165)	Au, Cu	D(3:770)
92	Opémisca	1C-1	32 G/16	SOQUEM INC / Nimsken Corporation Inc.	Michwacho (1340)	Au, Cu, POE	T
93	Pascalis	1C-4	32 C/04	Richmont Mines Inc.	Mine Beaufoir	Au, Ag	D(?:13 023), T
94	<b>Pershing</b>	<b>1C-4</b>	<b>32 C/03</b>	<b>South-Malartic Exploration Inc.</b>	<b>Mine Croinor</b>	<b>Au</b>	<b>B(24 363:5,0), D(4:993), Re, TE</b>
95	Pershing, Vauquelin, Haig	1C-4	32 C/03	South-Malartic Exploration Inc.	Croinor	Au	D(4:993), TE
96	Poularies	1C-1	32 D/10	Golden Valley Mines Ltd	Rivière Lois	Au, base metals	GpE, GpMa
97	Queylus, La Dauversière	1C-1	32 G/09	Cambior Inc.	Lac Palmer	Au	G, GpEm(a), Gs(t), Pr
98	Rohault, La Dauversière	1C-1	32 G/08, 09	Campbell Resources Inc. / SOQUEM INC.	Joe Mann (Meston)	Au, Ag, Cu	D(11:3734)
99	Rouyn	1C-3	32 D/03	Alexis Minerals Corp.	Lac Pelletier	Au	TE
100	Rouyn, Joannès	1C-3	32 D/02	Cambior Inc.	Rouyn-Merger	Au	D(9:3790), Pg
101	Roy	1C-1	32 G/16	Campbell Resources Inc.	Mine Copper Rand	Au, Cu	D(?:?)
102	Scott	1C-1	32 G/15	Golden Valley Mines Ltd	Lac Delieux	Au	GpE, GpMa
103	Scott	1C-1	32 G/15	Golden Valley Mines Ltd	Ile Joe	Au	GpE, GpMa
104	Scott	1C-1	32 G/15	Golden Valley Mines Ltd	Béarnac	Au	GpE, GpMa
105	Scott	1C-1	32 G/15	Golden Valley Mines Ltd	Bejoppa	Au	GpE, GpMa
106	Scott	1C-1	32 G/15	Northern Mining Explorations Ltd	Claveau	Au, Cu	D(6:1086), GpE, GpMa, Pr, TE
107	Senneville	1C-4	32 C/04	Golden Valley Mines Ltd	Lac Laverdière	Au	GpE, GpMa

TABLE 1C-1 - Exploration projects for gold in the Abitibi and Pontiac subprovinces in 2005.

Nos.	TOWNSHIPS	Fig.	NTS	COMPANIES / PROSPECTORS	PROJECTS	SUBSTANCES	WORKS <sup>(1)</sup>
108	Senneville	1C-4	32 C/04	Golden Chalice Resources Inc.	Senneville	Au	GpEm, GpMa
109	Senneville, Vassan	1C-4	32 D/04	Ressources JCM Inc.	Val d'Or	Au, Cu	GpEl, GpEm, GpMa
110	Urban	1C-1	32 G/04	Hinterland Metals Inc.	Lockout	Au	GpEl, GpMa, T
111	Urban	1C-1	32 G/04	Murgor Resources Inc. / Freewest Resources Canada Inc.	Windfall	Au	D(79:11 046), G, GpEl (s), Gs(r), T
112	Urban	1C-1	32 G/04	Noront Resources Ltd	Windfall Lake	Au	D(43:?) G, Gs(r), T
113	Vassan	1C-4	32 C/04	A. Gaulin	Gaulin	Au, Ag, Cu	GpEl, Gc(sl)
114	Vassan	1C-4	32 C/04	Stellar Pacific Ventures Inc.	Vassan	Au	D(10:2500)
115	Vauquelin	1C-4	32 C/03	South-Malartic Exploration Inc. / C2C Inc.	Bruell	Au	S(12:1089), TE
116	Vauquelin	1C-4	32 C/03	Melkior Resources Inc.	Vauquelin	Au	G

1 = See the legend of abbreviations and the signification of italic and bold type in the appendix II.

TABLE 1C-2 - Exploration projects for base metals in the Abitibi and Pontiac subprovinces for 2005.

Nos.	TOWNSHIPS	Fig.	NTS	COMPANIES / PROSPECTORS	PROJECTS	SUBSTANCES	WORKS (1)
P1	Barraute	1C-2	32 C/12	Abcourt Mines Inc.	Abcourt-Barvue	Zn-Ag	TE
P2	Blondeau	1C-2	31 M/07	J.-R. Frédéric	Lac Pleau	Diamond-Cu-Zn-Ni-Co-Cr	G, TE
P3	Blondeau, Guillet, La Noue, Bellefeuille	1C-2	31 M/07	Géotech Exploration	Lac Diamant	Diamond-Ni-Cu-PGE-REE	TE, G
P4	Bousquet	1C-3	32 D/08	F. Valliquette	Chassignolle	Cu-Au	GpMa
P5	Broullan, Carheil	1C-2	32 E/14	Woodruff Capital Management Inc.	Selbaie West	Cu-Zn-Au-Ag	GpEm(A)
P6	Cadillac	1C-3	32 D/08	Agnico-Eagle Mines Ltd	LaRonde Mine	Cu-Zn-Au-Ag	D(???)
P7	Cavelier, Galinée	1C-2	32 F/12	SOQUEM INC. / Metco Resources Inc.	Du Dôme-Matagami (1288)	Zn-Cu	D(16:7791), GpEm, GpMa, GpEm(B)
P8	Destor, Poularies	1C-3	32 D/10	Globex Mining Enterprises Inc.	Lyndhurst	Cu-Zn	GpEl
P9	Ducros	1C-2	32 C/11	Golden Valley Mines Ltd	Ducros	Ni-Cu	GpMa(G), GpEm(G), Pr, S
P10	Dufresnoy, Cléricy, Destor	1C-3	32 D/07	Breakwater Resources Ltd	Bouchard-Hébert	Cu-Zn-Au-Ag	D(21:10138), GpMa, GpEm(B), GpEl
P11	Duparquet	1C-3	32 D/11	Golden Valley Mines Ltd	Golden Jet	Cu-Zn-Au-Ag	GpMa, GpEm, GpEl
P12	Duparquet, Destor	1C-3	32 D/11	Golden Valley Mines Ltd	Hunter Mine Group	Cu-Zn-Ag	GpMa, GpEm, GpEl
P13	Estrées, Estrades	1C-2	32 E/10	Woodruff Capital Management Inc.	Estrades	Cu-Zn-Au-Ag	D(6:3203), GpEm(B)
P14	Fiedmont	1C-2	32 C/05	Kinbauri Gold Corporation	Fiedmont EGP	Ni-Cu-PGE	Pr, T, S
P15	Figury	1C-2	32 D/08	Agnico-Eagle Mines Ltd	Figury	Cu-Zn-Au-Ag	D(3:1754), GpEm
P16	Gaboury	1C-2	31 M/06	Hinterland Metals Inc. / CZM Capital Corp.	Lorraine	Ni-Cu-PGE-Au	D(?:?)
P17	Hébécourt	1C-3	32 D/06	Woodruff Capital Management Inc.	Hébécourt	Cu-Zn-Au-Ag	D(4:2596), GpEm(B)
P18	La Morandière	1C-2	32 C/12	Woodruff Capital Management Inc.	Castagnier	Cu-Zn-Au-Ag	D(4:1571), GpEm(B)
P19	La Motte	1C-2	32 D/08	Les Pierres du Nord	Moly Hill	Mo	B
P20	La Noue, Guay	1C-2	31 M/07	Géotech Exploration	Lac des Mouffettes	Diamond-Au-Ni-Cr-REE	TE
P21	Landrienne	1C-2	32 C/05	Woodruff Capital Management Inc.	Landrienne	Cu-Zn-Au-Ag	D(4:1734), GpEm(B)
P22	La Peltrie	1C-2	32 E/14	D. Adam	Olifred	Diamond	GpMa
P23	Lemoine	1C-2	32 G/09	Campbell Resources Inc.	Corner Bay	Cu-Ag	D(13:1338), GpEm(B), GpEm
P24	Lemoine, Rimfret	1C-2	32 G/16	Woodruff Capital Management Inc.	Lemoine	Cu-Zn-Au-Ag	D(9:6583)
P25	Le Tac	1C-2	32 F/08	Ressources Melkior Inc.	Kimber	Diamond	G
P26	Le Tac	1C-2	32 F/08	Ressources Melkior Inc.	Lite	Diamond	G
P27	Le Tac	1C-2	32 F/08	NioGold Mining Corporation	Le Tac	Cu-Zn-Ag-diamond	D(8:2271)
P28	Lévy	1C-2	32 G/15	2736-1179 Québec Inc.	Cooke	Zn-Pb-Ag-Au	D(15:5998)
P29	Lévy	1C-2	32 G/15	Ressources MSV Inc.	Dimanche	Cu-Zn-Au-Ag	D(2:517), GpMa, GpEm, T



TABLE 1C-2 - Exploration projects for base metals in the Abitibi and Pontiac subprovinces for 2005.

Nos.	TOWNSHIPS	Fig.	NTS	COMPANIES / PROSPECTORS	PROJECTS	SUBSTANCES	WORKS <sup>(1)</sup>
P30	Lévy	1C-2	32 G/15	Explorateurs Innovateurs de Québec Inc.	Opémisca Mine	Cu-Au	D(13:250), Gp
P31	Louvicourt	1C-4	32 C/04	Alexis Minerals Corporation	Dunraine	Cu-Zn-Au-Ag	D(3:1782)
P32	Louvicourt	1C-4	32 C/03	Beaufield Consolidated Resources Inc. / Aur Resources Inc.	Mainstreet	Cu-Zn-Au-Ag	GpMa, Gs, G
P33	Louvicourt	1C-4	32 C/03	Gianor Mineral Inc.	Louvicourt	Cu-Zn-Au-Ag	Pr, T
P34	McKenzie	1C-2	32 G/16	Resources MSV Inc.	Jaculet	Cu-Au-Ag	D(5:3250), GpMa, GpEm, GpEm(B)
P35	Montbray	1C-3	32 D/06	Golden Valley Mines Ltd	Digueudou	Cu-Zn-Ag	GpMa, GpEm
P36	Montviel	1C-2	32 F/15	NioGold Mining Corporation	Montviel	Nb-P-REE-Cu-Zn-diamond	Gc(s), Pr, S
P37	Mountain	1C-2	32 F/01	Metco Resources Inc. / Breakwater Resources Ltd	Mountain A	Zn-Cu-Ag-Au	D(?:?)
P38	Mountain, Ruelle	1C-2	32 F/01	Metco Resources Inc.	Mountain B	Zn-Cu-Ag-Au	D(?:?)
P39	Poirier	1C-2	32 E/08	Mines Cancor Inc. / AVR Resources	Bonfortel	Cu-Zn-Au-Ag	D(5:3821), GpEm, GpMa, GpGr
P40	Poirier	1C-2	32 E/08	Mines Cancor Inc. / SOQUEM INC.	Kistabiche	Zn-Cu-Ag-Au	D(10:7000), GpEm, GpMa, GpGr, GpEl
P41	Poirier	1C-2	32 E/08	Mines Cancor Inc.	Poirier	Zn-Cu-Au-Ag	GpMa, GpEm
P42	Scott, Barlow	1C-2	32 G/15	SOQUEM INC.	William (1362)	Cu-Zn	GpEm P
P43	Scott, Lévy	1C-2	32 G/15	Woodruff Capital Management Inc.	Scott	Cu-Zn-Au-Ag	GpEm(A)
P44	Tonnancour, Josselin	1C-2	32 C/14, 15	Globex Mining Enterprises Inc.	Tonnancour	Cu-Zn	Pr, Gp(A)
P45	Valrennes, Joutel	1C-2	32 E/08	Breakwater Resources Ltd	Valrennes	Cu-Zn-Au	Pr
P46	Vignal	1C-2	32 F/10	Explorateurs Innovateurs de Québec Inc.	Lac au Goellan	Ni-Cu	Gp, T, S
P47	Villebon	1C-2	31 N/14	Louvicourt Gold Mines	Villebon	Cu-Ni-Co-Pt-Pd-Rh	TE
P48		1C-2	32 G, 32 J	Dianor Resources Inc.	La Trève	Diamond	GpMa(G), Gc(s)
P49		1C-2	32 G/16	Novawest Resources Inc.	Chibougamau	Cu-Au-Ag	D(4:993), Pr, T, GpEm, GpMa
P50		1C-2	32 E/15, 32 L/02	Resources Majescor Inc.	Nothaway	Diamond	Rcd(4:206), Gs(t)
P51		1C-2	31 M/08, 09, 10, 11	Exploration Fieldex Inc. / FNX Mining Company	Temiscamingue	Cu-Ni-Au	D(?:3000), GpEm, GpMa, Pr, T
P52	Duprat	1C-3	32 D/06	Alexis Minerals Corporation / Falconbridge Ltd	West Ansil	Cu-Zn-Au-Ag	D(?:?)
P53	Louvicourt	1C-4	32 C/03	Alexis Minerals Corporation / Novicourt Inc.	Louvox	Cu-Zn-Au-Ag	D(?:?)
P54	Ste-Hélène, La Cauchetière, Bapst	1C-2	32 E/16	SOQUEM INC.	Samson (1091)	Cu-Zn	D(2:506), GpEm, GpMa, GpEm(B)
P55	Desmazures	1C-2	32 E/09	SOQUEM INC.	B6-20 Mdvor (1214)	Cu-Zn	D(1:228), GpEm, GpMa, GpEm(B)
P56	Broullan	1C-2	32 E/14	SOQUEM INC.	Wagasic (1338)	Cu-Zn	GpEm

TABLE 1C-2 - Exploration projects for base metals in the Abitibi and Pontiac subprovinces for 2005.

Nos.	TOWNSHIPS	Fig.	NTS	COMPANIES / PROSPECTORS	PROJECTS	SUBSTANCES	WORKS <sup>(1)</sup>
P57	Javernier, Pershing	1C-4	32 C/02, 03	SOQUEM INC.	Matchi-Manitou (1352)	Cu-Zn	GpEm
P58	Des Méloizes, Perron, Clermont, Rousseau	1C-2	32 D/14	SOQUEM INC.	Lac Des Méloizes (1356)	Cu-Zn	GpEm
P59	Duparquet, Hébécourt	1C-3	32 D/11	SOQUEM INC.	Ruisseau Deguisier (1357)	Cu-Zn	GpEm
P60	Dufresnoy	1C-3	32 D/07	SOQUEM INC.	Dufault Sud (1359)	Cu-Zn	GpEm, GpMa
P61	Lozeau	1C-2	32 F/14	SOQUEM INC.	Lac Garon (1360)	Cu-Zn	GpEm, GpMa

1 = See the legend of abbreviations and the signification of italic and bold type in the appendix II.