

En quoi le site d'origine des plantations de peupliers hybride influence-t-il la composition et la diversité des communautés végétales ?

Geoffrey Zanin, Annie DesRochers et Nicole Fenton



Natural Resources Canada
Ressources naturelles Canada

Canada

Ressources naturelles
et Forêts

Québec



GROUPEMENT FORESTIER
COOPÉRATIF ABITIBI



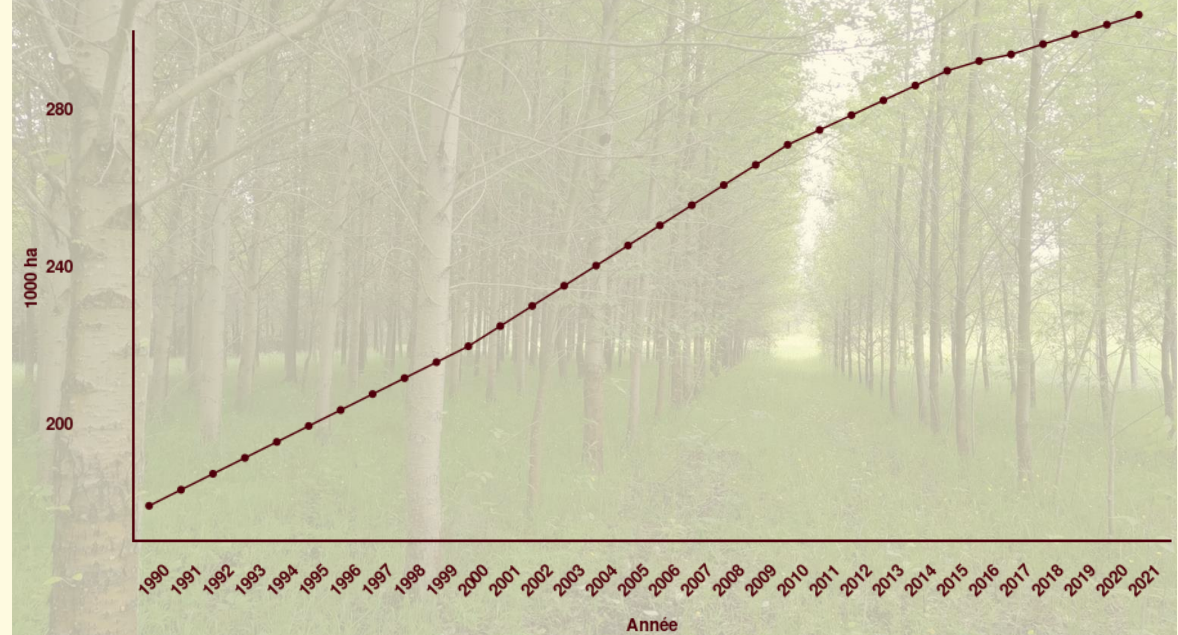
NSERC
CRSNG

Production mondiale de bois rond de 1993 à 2022



Données : FAOstat (2024)

Surface en forêt plantée de 1990 à 2021



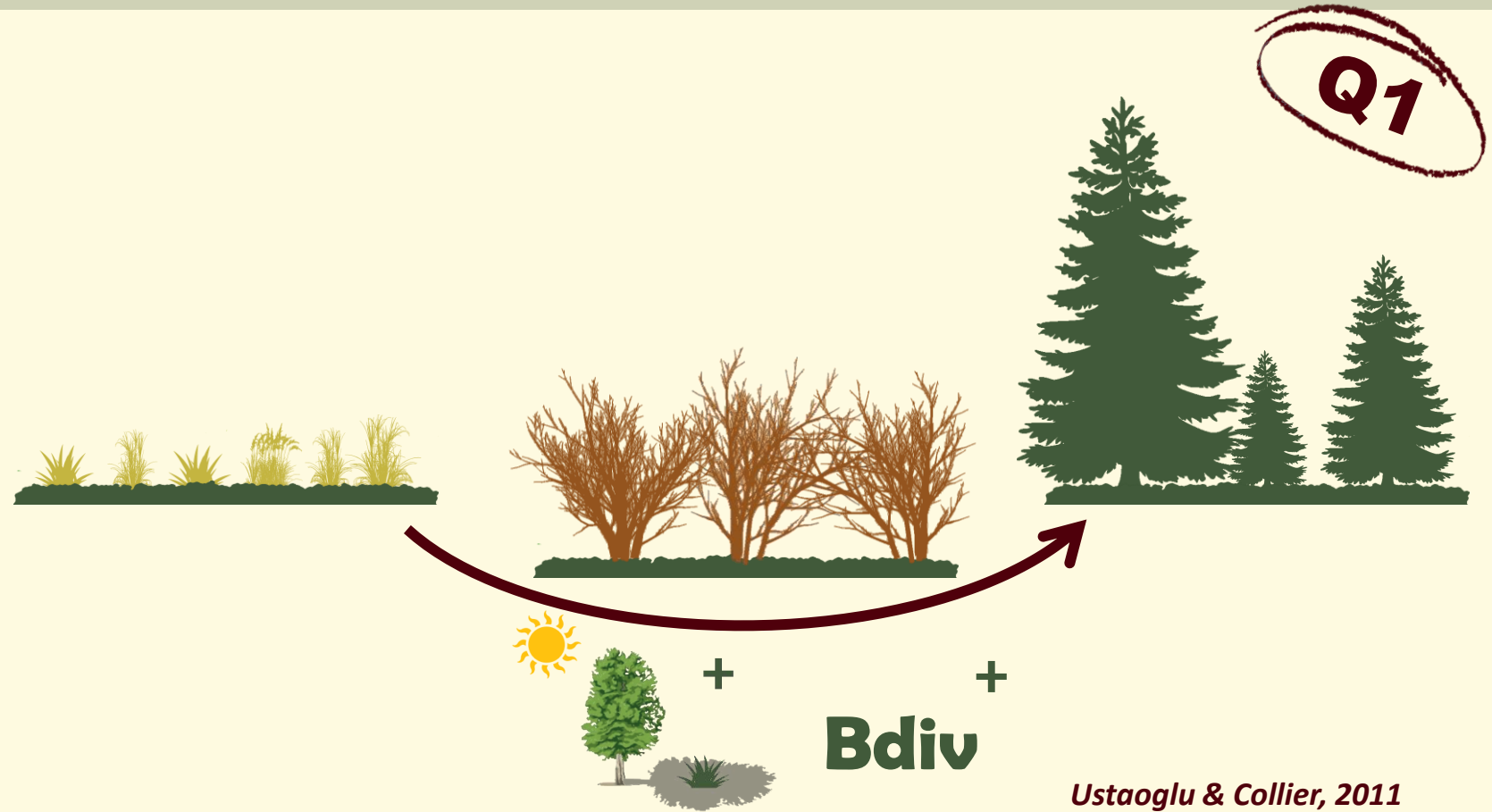
Données : FAOstat (2024)

Global land use change, economic globalization, and the looming land scarcity

Eric F. Lambin^{a,b,1} and Patrick Meyfroidt^b

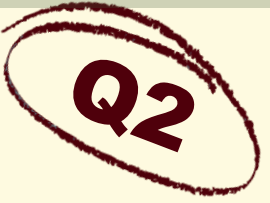
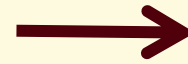
« Land, an Increasingly Scarce Resource »

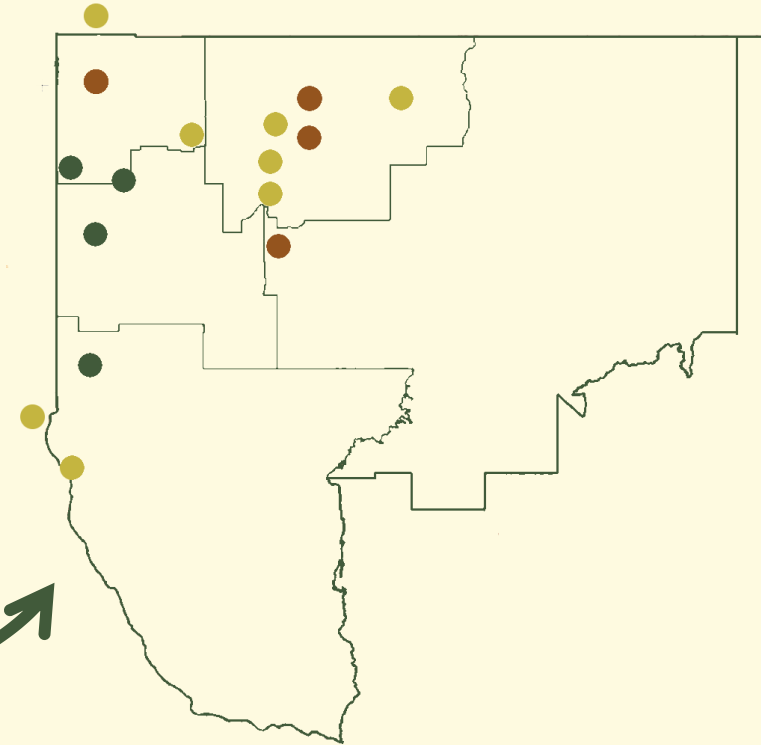
Lambin & Meyfroidt, 2011



Green desert?: Biodiversity patterns in forest plantations

Jakub Horák^{a,*}, Tereza Brestovanská^a, Strahinja Mladenović^a, Jiří Kout^b, Petr Bogusch^c,
Josef P. Halda^c, Petr Zasadil^d





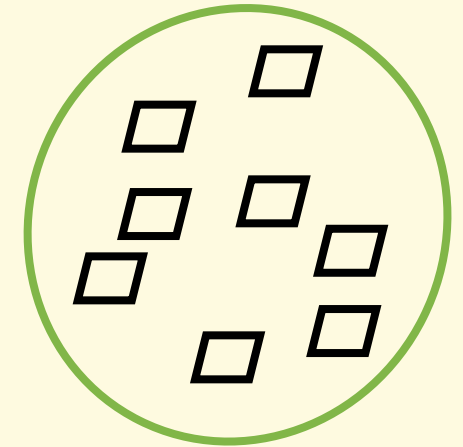
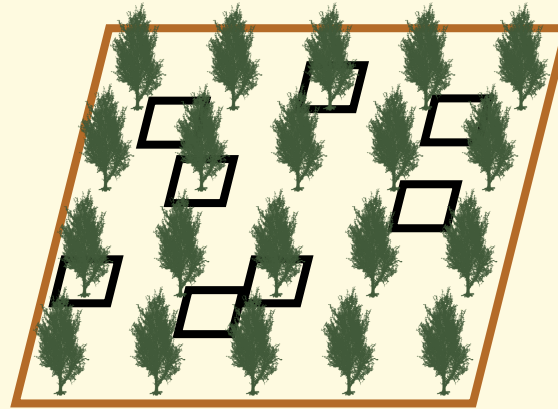
16 Sites

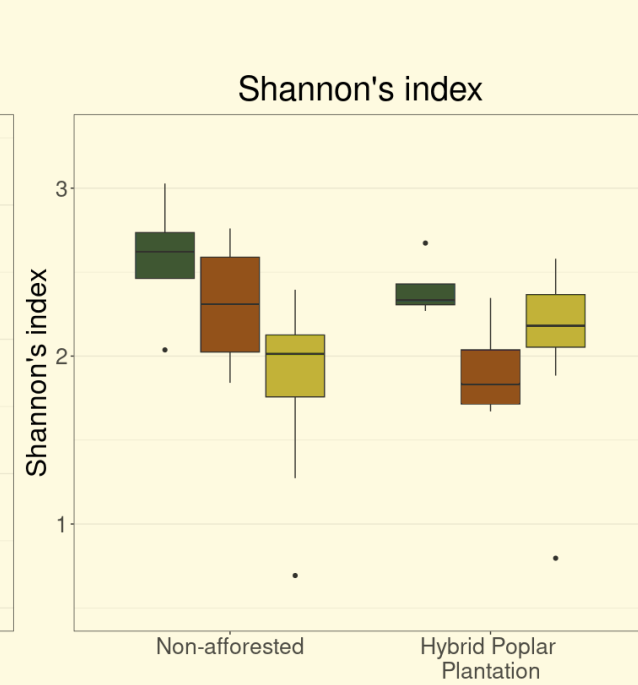
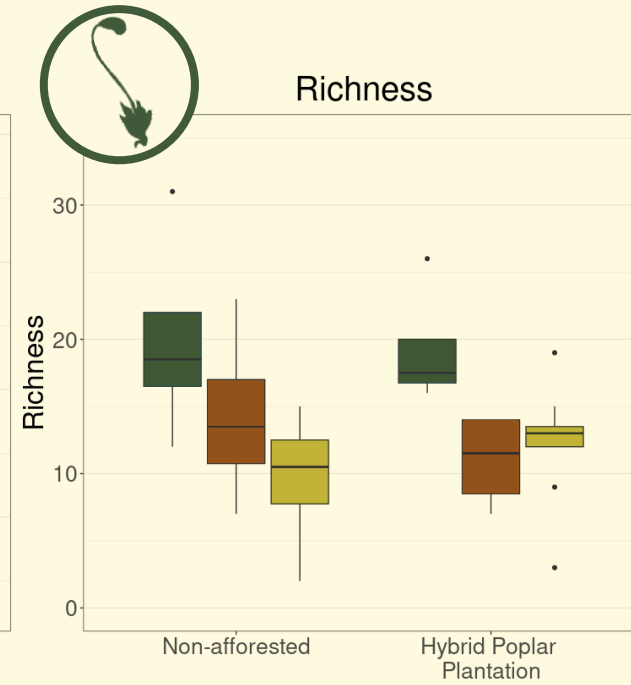
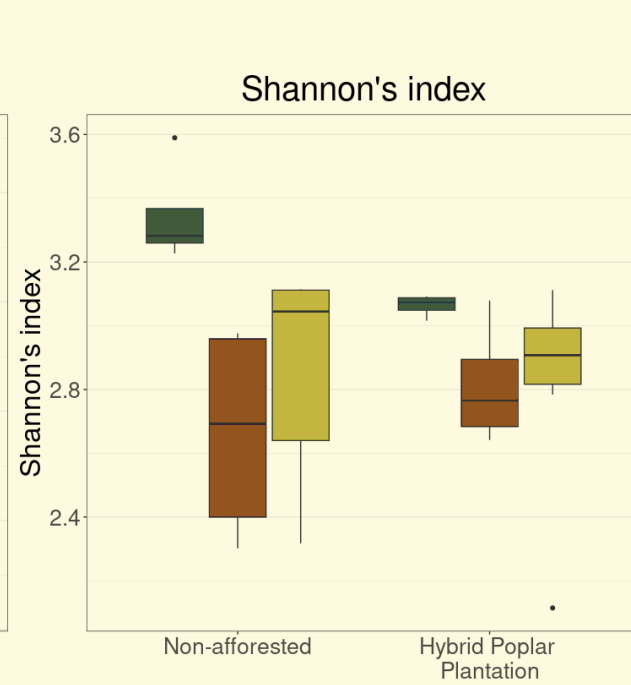
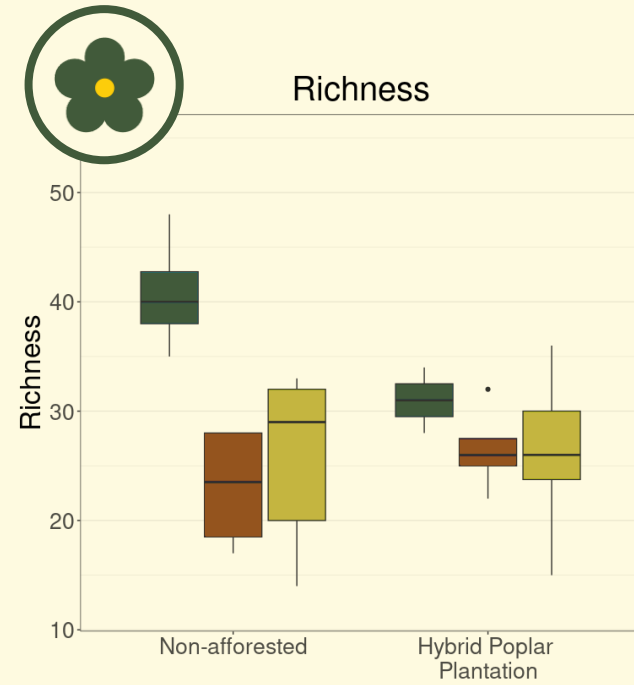
Site
=
Plantation PEH
+
Zone voisine non
reboisée

4 sites de coupe mal régénérés

4 sites de friches arbustives






8 sites de friches herbacées

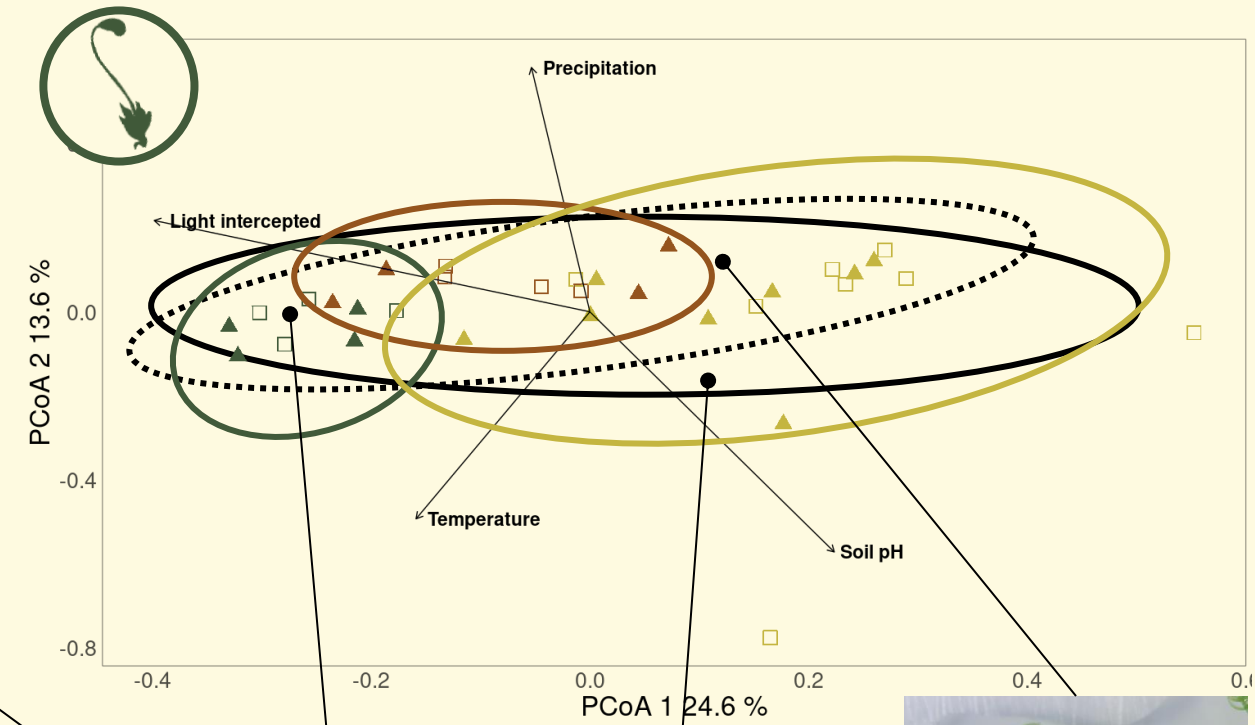
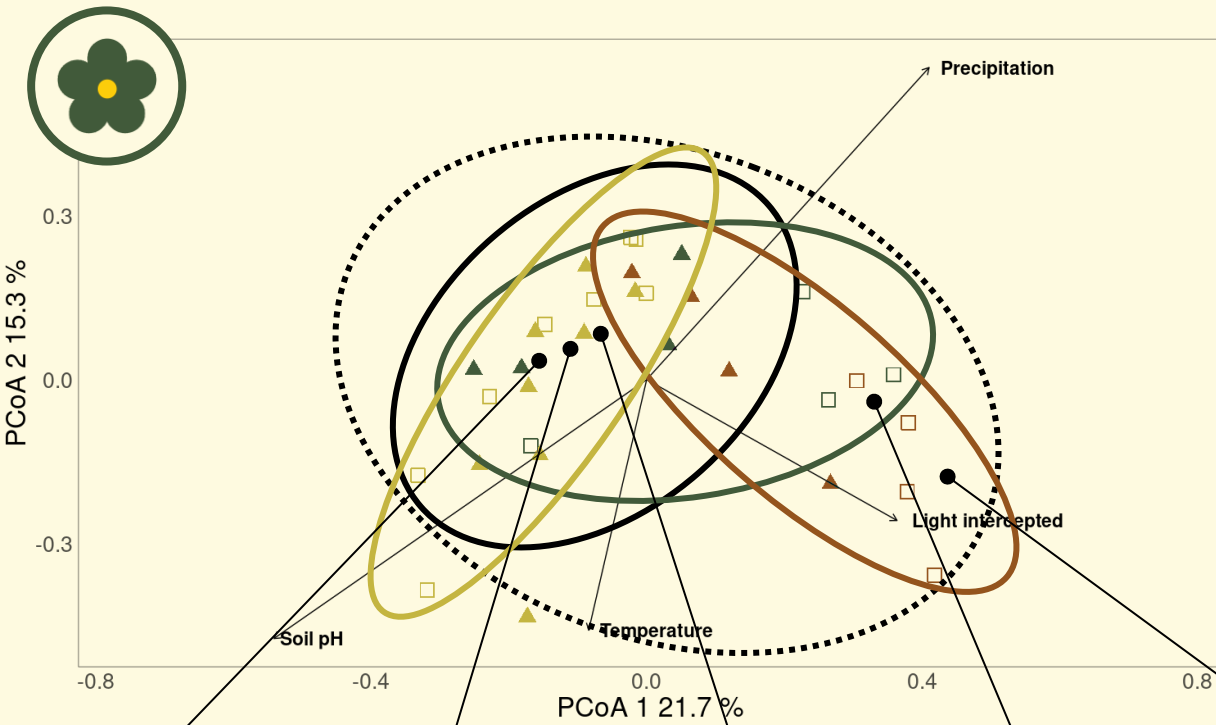


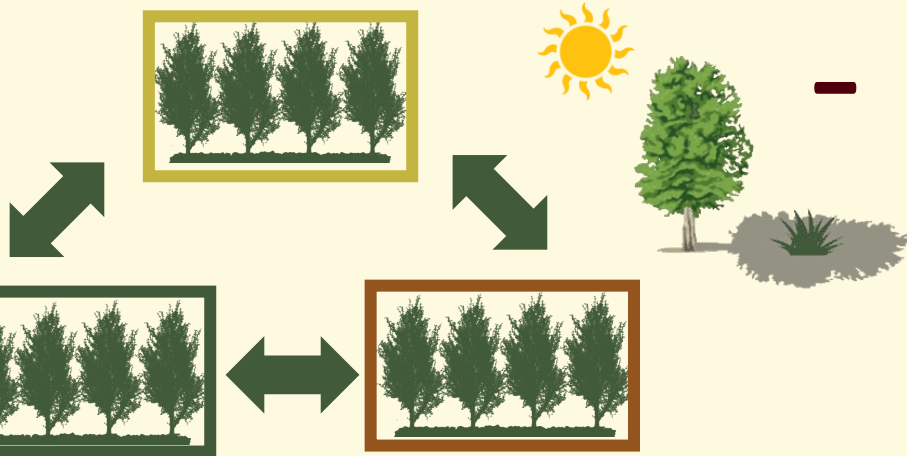


Legend: Forested stand (dark green), Shrubby AAL (brown), Herbaceous AAL (olive green)

ANOVA (Pr)	Richesse	Shannon	Richesse	Shannon
Reboisement	0,29	0,4	0,77	0,28
Origine du site	0,0076**	0,04*	0,02*	0,17
Interaction	0,042*	0,08	0,27	0,046*

 Forested stands
  Shrubby AAL
  Herbaceous AAL
  Non-afforested
  Plantation



**Bdiv****Faible diversité des friches agricoles****Envahissement par des espèces allochtones****Ombre insuffisante pour les espèces tolérantes à l'ombre****Traitements sylvicoles trop destructeurs pour la banque de graine**



Coupe forestière



Friche arbustive



Friche herbacée



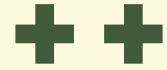
Dispersion des bryophytes à partir des zones non reboisées



Friche herbacée



Peu de bryologues dans les friches
Dispersion par les machines sylvicoles



Vs.



Merci à Vous !!

Bibliographie

Lambin, E.F., Meyfroidt, P., 2011. Global land use change, economic globalization, and the looming land scarcity. Proc. Natl. Acad. Sci. U.S.A. 108, 3465–3472. <https://doi.org/10.1073/pnas.1100480108>

Horák, J., Brestovanská, T., Mladenović, S., Kout, J., Bogusch, P., Halda, J.P., Zasadil, P., 2019. Green desert?: Biodiversity patterns in forest plantations. Forest Ecology and Management 433, 343–348. <https://doi.org/10.1016/j.foreco.2018.11.019>

Ustaoglu, E., Collier, M.J., 2018. Farmland abandonment in Europe: an overview of drivers, consequences, and assessment of the sustainability implications. Environ. Rev. 26, 396–416. <https://doi.org/10.1139/er-2018-0001>

Gachet, S., Leduc, A., Bergeron, Y., Nguyen-Xuan, T., Tremblay, F., 2007. Understory vegetation of boreal tree plantations: Differences in relation to previous land use and natural forests. Forest Ecology and Management, Understory and epiphytic vegetation as indicators of the ecological integrity of managed forests: a synthesis of the special issue 242, 49–57. <https://doi.org/10.1016/j.foreco.2007.01.037>

Soo, T., Tullus, A., Tullus, H., Roosalu, E., 2009. Floristic diversity responses in young hybrid aspen plantations to land-use history and site preparation treatments. Forest Ecology and Management 257, 858–867. <https://doi.org/10.1016/j.foreco.2008.10.018>

Crédits photos

Slide 0 : G. Zanin

Slide 1 : « Skidder mit Kran Klemmbank und Frontpolter » by Michael KR CC BY-SA 4.0, G. Zanin

Slide 3 : « Green desert » by Stable A.I

Slide 6 : K. Rheault, G. Zanin

Slide 9 : T. Pratense by Ineka CC BY-SA 4.0, V. Cracca by Lukelythgoe CC BY-SA 4.0, R. Acris by Keith_seifert CC BY-SA 4.0, R. Triste by Akdhampton CC BY-SA 4.0, M. Canadensis by Pburka CC BY-SA 4.0

Slide 11 : G. Zanin

New Forests (2025) 56:12

<https://doi.org/10.1007/s11056-024-10080-8>

RESEARCH



Impact of the origin of sites planted with hybrid poplar on plant community composition and diversity

Geoffrey Zanin¹ · Annie DesRochers¹ · Nicole J. Fenton²

