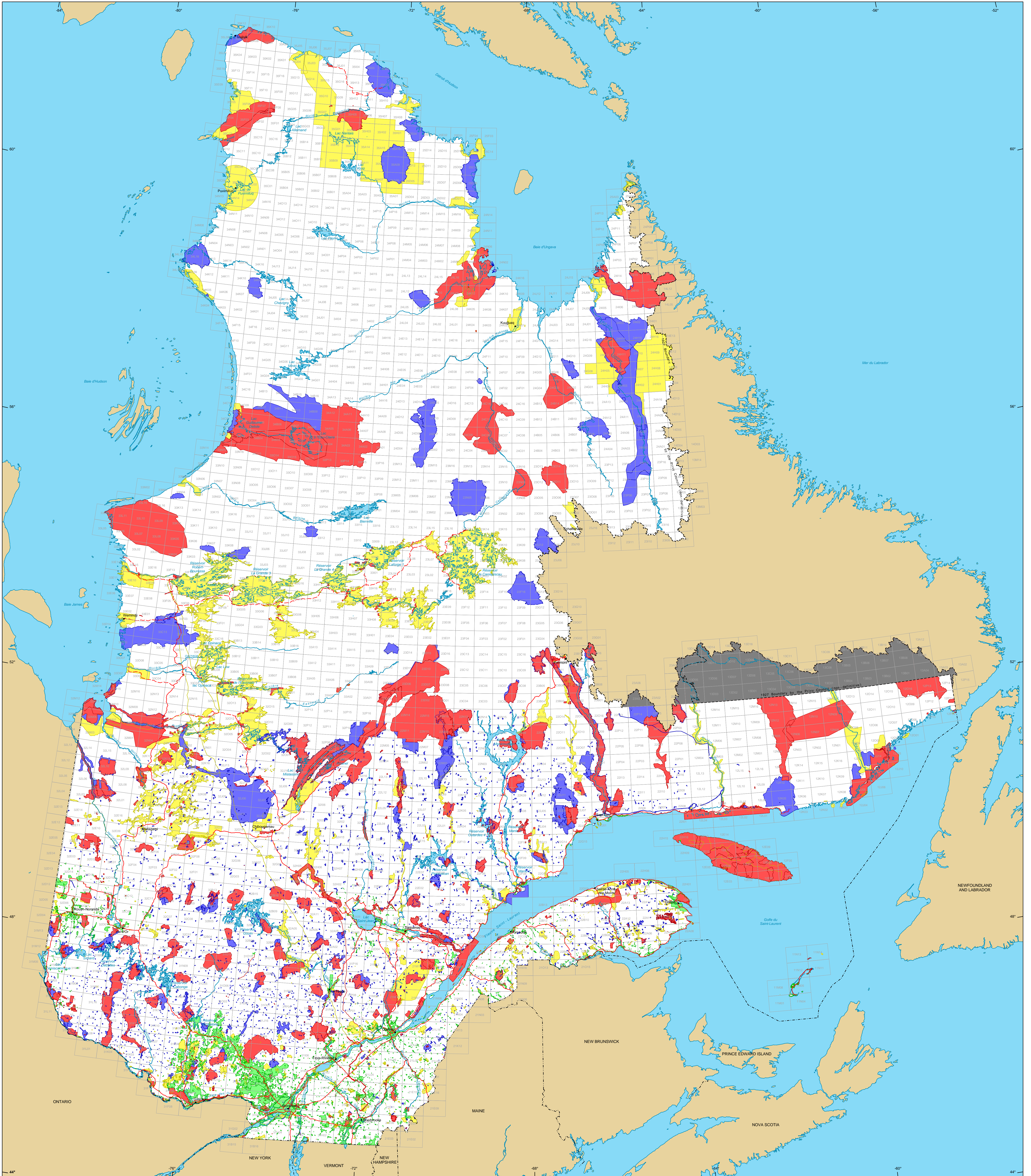


# Restrictions to Mining Exploration



## Restrictions to mining exploration

- Major Exploration prohibited  
Superficie: 15 162 078 ha
- Minor Exploration under specific conditions  
Superficie: 9 983 034 ha
- Major Exploration permitted with municipal consent  
Superficie: 1 628 490 ha
- Major Land suspended temporarily  
Superficie: 10 856 410 ha
- Major Withdrawal from staking, Order in Council  
Superficie: 2 897 400 ha

## Border

- International
- Interprovincial, Interstate
- Québec - Newfoundland and Labrador  
(This border is not definitive.)

## Road Network

- Road
- Unpaved Road

## Hydrography

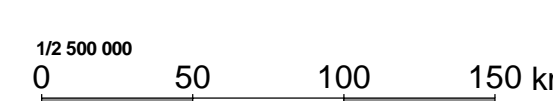
- Lake
- River

- Populated Place
- Other Jurisdiction
- 1:50 000 NTS Sheets Limits

Area of the Province of Québec: 166 744 100 ha

Notice - The areas calculated represent the sum of the surface area of each individual mining restriction. The calculation does not take into consideration the possible overlapping of some areas.

**Metadata**  
Geodesic Datum: NAD 83  
Coordinate System: Conic Lambert with two standard parallels (46° and 60°)



Sources	Organization	Year
Mining	MIRNF	2012
Cartographic Reference (SICQA TM, SICQA SM)	MIRNF	2011

**Réalisation**  
Ministère des Ressources naturelles et de la Faune  
Direction des mines et des systèmes  
Notice - This document has no legal value.

© Gouvernement du Québec, February 7, 2012