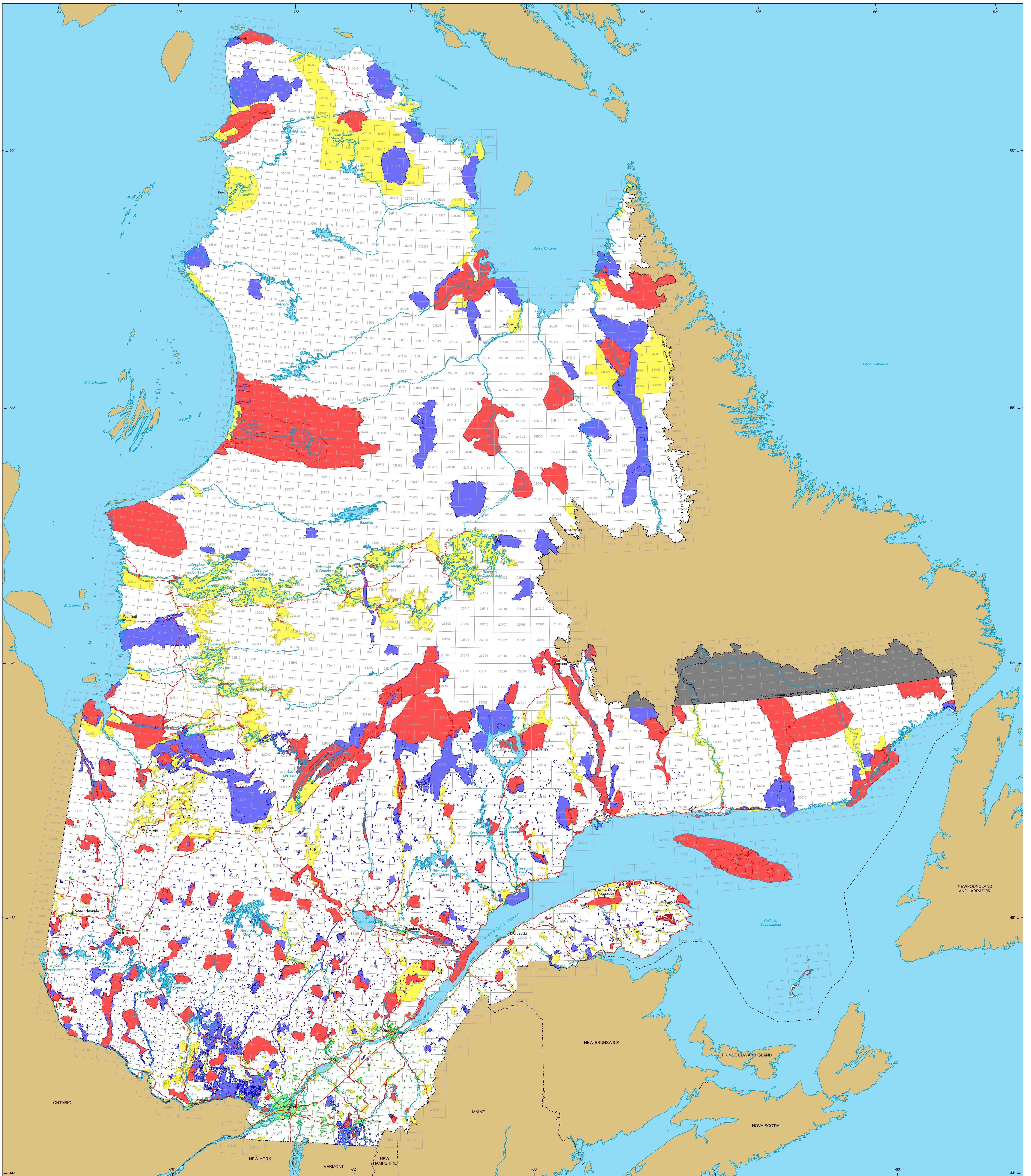


Restrictions to Mining Exploration



Restrictions to mining exploration

- Major Exploration prohibited
Area: 17 647 354 ha
- Minor Exploration under specific conditions
Area: 12 474 009 ha
- Major Urban perimeter
Area: 555 381 ha
- Major Land suspended temporarily
Area: 14 826 668 ha
- Major Withdrawal from staking, Order in Council
Area: 2 897 400 ha

Border

- International
- Interprovincial, Interstate
- Québec - Newfoundland and Labrador (This border is not definitive)

Road Network

- Road
- Unpaved Road

Hydrography

- Lake
- River

Populated Place

Other Jurisdiction

1:50 000 NTS Sheets Limits

Area of the Province of Québec: 166 744 100 ha

Notices:

The areas calculated represent the sum of the surface area of each individual mining restriction. The calculation does not take into consideration the possible overlapping of some areas.

The areas indicated are calculated according to the Modified Transverse Mercator coordinate system with the NAD 83 geodesic datum.

Metadata

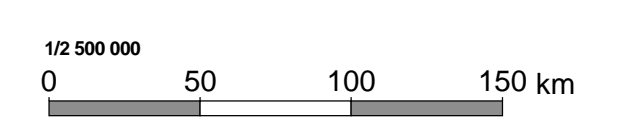
Geodesic Datum: NAD 83
Cone: Lambert with two standard parallels (46° and 60°)

Sources

Data	Organization	Year
Mining Cartographic Reference (SICQA 1M, SICQA 9M)	MERN	2011

Realisation

Ministère de l'Énergie et des Ressources naturelles
Direction du développement et du contrôle de l'activité minière
Notice: This document has no legal value.



© Gouvernement du Québec, August 2, 2017