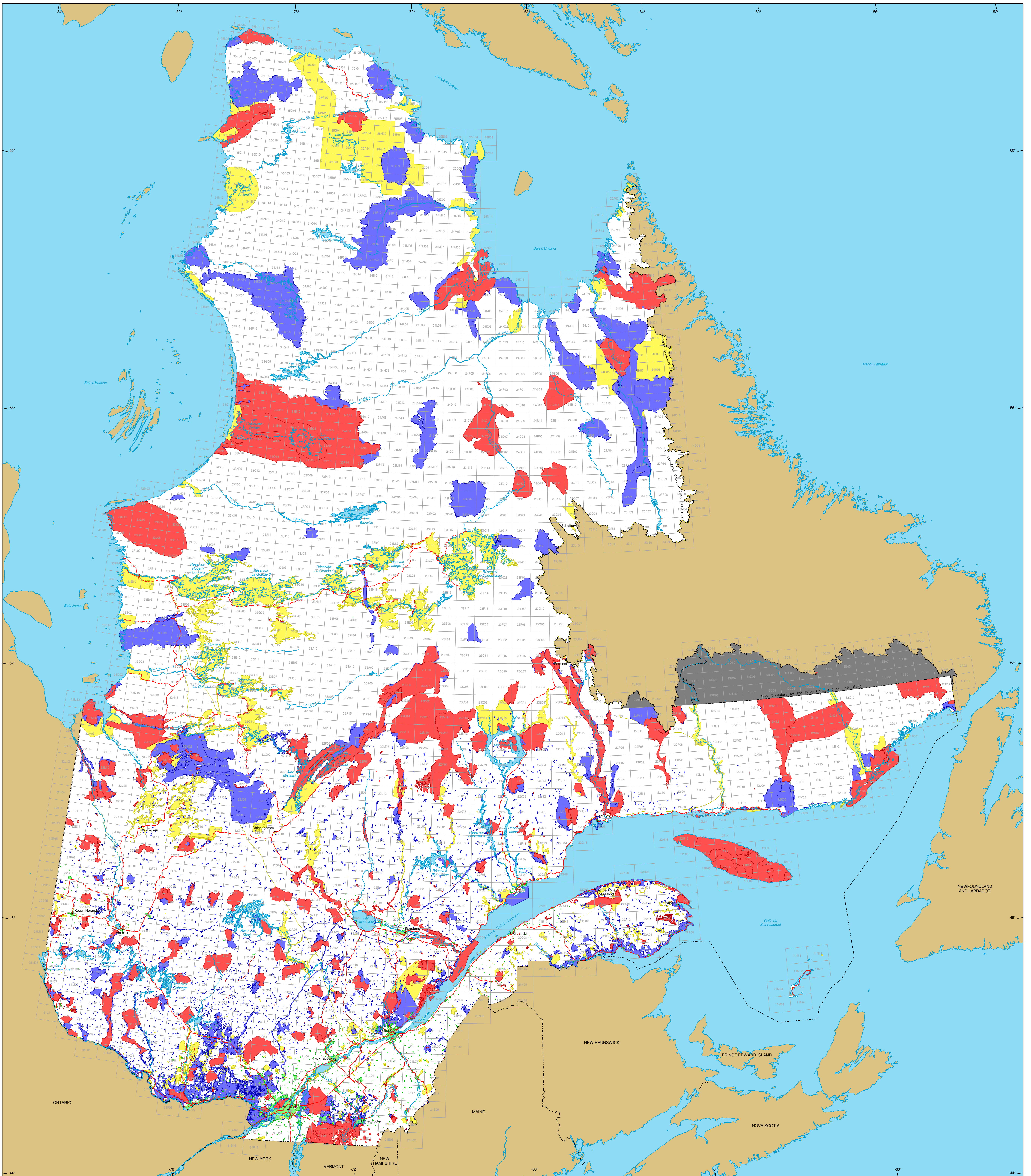


# Restrictions to Mining Exploration



## Restrictions to mining exploration

- Major Exploration prohibited  
Area: 20 046 236 ha
- Minor Exploration under specific conditions  
Area: 12 800 542 ha
- Major Urban perimeter  
Area: 526 752 ha
- Major Land suspended temporarily  
Area: 18 055 850 ha
- Major Withdrawal from staking, Order in Council  
Area: 2 897 400 ha

## Border

- International
- Interprovincial, Interstate
- Québec - Newfoundland and Labrador (This border is not definitive).

## Road Network

- Road
- Unpaved Road

## Hydrography

- Lake
- River

## Populated Place

- Other Jurisdiction

## 1:50 000 NTS Sheets Limits

- 

Area of the Province of Québec: 166 744 100 ha

## Notices:

The areas calculated represent the sum of the surface area of each individual mining restriction. The calculation does not take into consideration the possible overlapping of some areas.

The areas indicated are calculated according to the Modified Transverse Mercator coordinate system with the NAD 83 geodesic datum.

## Metadata

Geodesic Datum: NAD 83  
Coordinate System: Conic Lambert with two standard parallels (46° and 60°)

12 500 000



## Sources

Data	Organization	Year
Mining Cartographic Reference (SICQA 1M, SICQA 9M)	MERN	2020
	MERN	2011

## Realisation

Ministère de l'Énergie et des Ressources naturelles  
Direction du développement et du contrôle de l'activité minière

Notice: This document has no legal value.

© Gouvernement du Québec, February 20, 2020