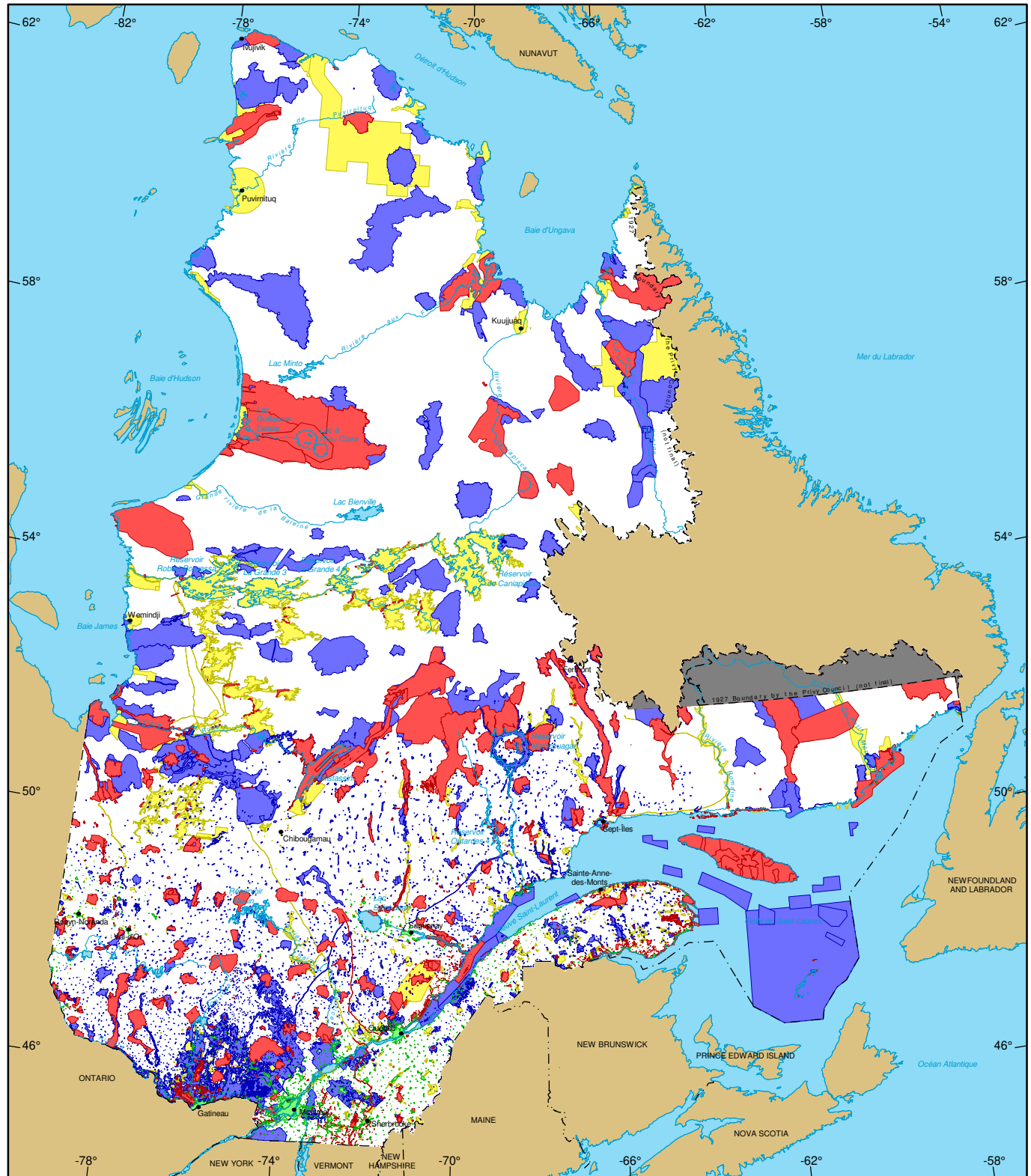


# Mining Restrictions in Québec



## Mining Restrictions

- |  |  |
|--|--|
| <ul style="list-style-type: none"> <li><span style="color: red;">■</span> Major Exploration prohibited<br/>19 951 934 ha</li> <li><span style="color: green;">■</span> Major Urban perimeter<br/>561 092 ha</li> <li><span style="color: blue;">■</span> Major Land Suspended Temporarily<br/>31 358 182 ha</li> </ul> | <ul style="list-style-type: none"> <li><span style="color: grey;">■</span> Major Withdrawal from Staking Order in Council<br/>2 897 400 ha</li> <li><span style="color: yellow;">■</span> Minor Exploration Under Specific Conditions<br/>12 414 700 ha</li> </ul> |
|--|--|

## Metadata

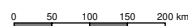
**Coordinate System**  
Conic Conformal Lambert with two standard parallels (46° and 60°)

## Sources

Mining data, MRNF, 2025  
Cartographic Reference, MRNF, 2011 (BDGA 1M, BDGA 5M)

Note : The areas calculated represent the sum of the surface area of each individual mining restriction. The calculation does not take into consideration the possible overlapping of some areas.

1/10 000 000



## Realisation

Ministère des Ressources naturelles et des Forêts  
Direction du développement et du contrôle de l'activité minière  
Notice : This document has no legal value.

© Gouvernement du Québec, February 10, 2025

**Ressources naturelles  
et Forêts**

**Québec**

