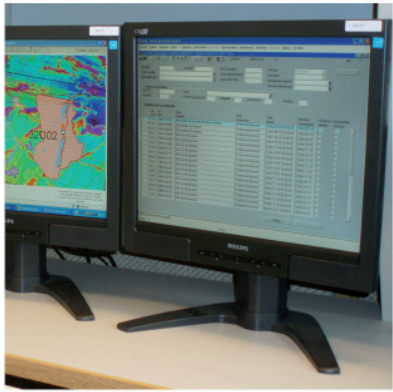
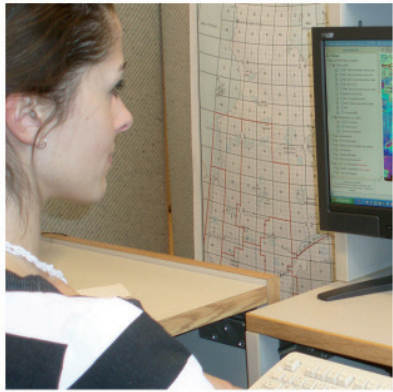
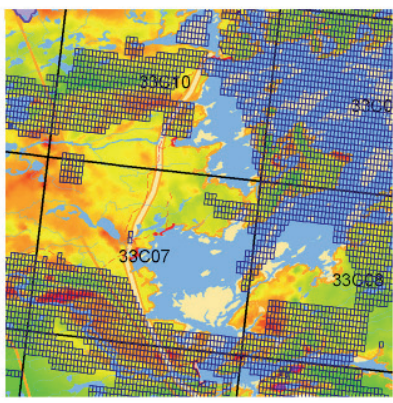
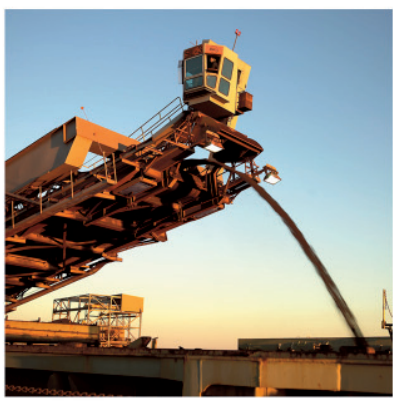
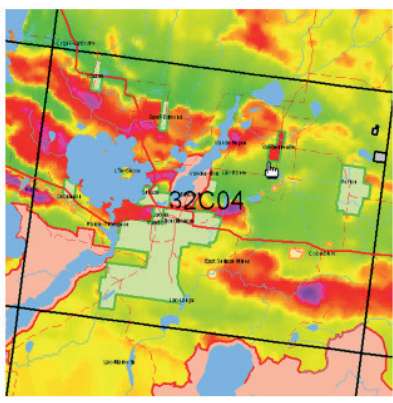


GESTIM Plus

Gestion des titres miniers en ligne

2 Consultation by Map



Consultation by Map

Table of Contents

	Page
1. Home page	2
2. Map display module	3
3. Display menus	4
4. Tool bars and functions	6
5. Navigation tools	7
6. Consultation of titles	8
7. Custom layer	9
8. SIGEOM layer	11

Consultation by Map

1. Home Page

The screenshot shows the home page of the GESTIM Plus website. The header includes the logo for 'Énergie et Ressources naturelles Québec' and 'GESTIM Plus' with the tagline 'Gestion des titres miniers'. A navigation menu on the left lists: Home, Consult Register, Research, Map, Designated Land, FTP Site, My Documents, and Online Forms. A callout box points to the 'Consult Register' link, stating 'Click on Consult Register.' Another callout box points to the 'Map' link, stating 'The map display module enables you to display an interactive map that you can use to query mining titles, create personalized queries and select parcels of land or titles when filling out forms.' The main content area features a 'Welcome!' message, a 'Notice' section, and a 'Terms of use' section. The 'Terms of use' section mentions that transactions can be carried out over the Internet in a secure environment and provides links to trading conditions and confidentiality policy. There is also an 'FTP site' section and a 'Help' section with contact information.

Click on Consult Register.

The map display module enables you to display an interactive map that you can use to query mining titles, create personalized queries and select parcels of land or titles when filling out forms.

Home

Home

Consult Register

Research

Map

Designated Land

FTP Site

My Documents

Online Forms

Welcome !

Welcome to GESTIM Plus, the Mining Title Management System. Whether you want to consult the Public Register of Real and Immovable Mining Rights, apply for a claim, renew a claim or present a Statement of Work, GESTIM Plus is at your service !

Notice

Direction générale de la gestion du milieu minier before a title or certificate of

Terms of use

Transactions with the Ministère de l'Énergie et des Ressources naturelles can now be carried out over the Internet, in a completely [secure](#) environment. Please read our [trading conditions](#) and our [confidentiality policy](#) carefully before proceeding with your transaction .

FTP site

Visit our [FTP site](#) where you will find various guides and tutorials for GESTIM Plus as well as the most up to date version of our Mining Titles Maps in PDF format. Everything on the FTP site is available for download FREE OF CHARGE. Most files are compatible with Adobe Acrobat Reader (PDF) format.

Please note : PDF documents that are viewed on GESTIM Plus or our FTP site are stored in your computer's cache. We suggest you erase these temporary files after each of your on-line sessions in GESTIM. This will allow you to view the most recent version of the file the next time you visit our site.

Help

For assistance or further information, please dial 418 627-6278 or 1 800 363-7233 (toll free, only in Canada) or contact us by e-mail at : service_mines@mem.gouv.qc.ca (Technical support for GESTIM Plus)

Consultation by Map

2. Map display module

Display scale

Tool bar and functions

Map Content

Categories Layers

- Active titles
- Titles pending
- Map Designation
- Lapsed Titles
- Surface Mineral Substances
- Restrictions to mining
- Agreements
- Mining Sites
- Conversion / Substitution
- SIGÉOM (Geology)
- Administrative Boundaries
- Cartographic Boundaries
- Base maps
- My Titles (privilege member)
- My Delegated Titles (privilege member)

1: 22100233

Navigation tools

Map content

Display of selected polygons (see p.5)

Selections

Québec

E: -84°52'36.16" N: 63°47'9.23"

0 400 800 km

It is not possible to execute queries on Québec as a whole. If the legend layer is shaded, the information is not available at that scale. Most of the layers for mining titles (active and past) start to be displayed at a scale of roughly 1:300,000. You must therefore use the navigation tools to obtain the desired display scale. (See page 7)

Consultation by Map

3. Display menus

Consult active and pending titles and land available for map designation

- Active titles
 - Authorizations without lease (ASB)
 - Exclusive Leases for SMS (BEX)
 - Mining Leases (BM)
 - Non-exclusive Leases for SMS (BNE)
 - Claims (CL, CLD, CDC)
 - Mining Concessions (CM)
- Titles pending
 - Exclusive Leases for SMS (BEX)
 - Mining Leases (BM)
 - Claims (CDC)
- Map Designation
 - Mandatory Period
 - Available Land
 - Titles pending (CDC)

Consult title history.

If the layer is shaded in the legend, the information is not available at this scale. You must use the zoom feature first.

List of titles and delegated titles belonging to the priority member. You must be identified as a GESTIM member to access these layers.

Constraints on mining activity and agreements that can be selected individually.

- Restrictions to mining
 - Urban perimeter
 - Mining-incompatible territory
 - Conditions and requirements
 - Mining activities prohibited
 - Petroleum and natural gas only
 - Temporary Suspension
 - Review by the Minister
 - Reference to the Department
- Agreements
 - Eeyou Istchee Baie James
 - Abitibiwinni First Nation
 - Agreement-in-Principle of General Nature (APGN)

Basic maps and map breakdowns

- Administrative Boundaries
 - Administrative Regions
 - Regional County Municipality (RCM)
 - Municipality
 - Township / Seigneurie
- Cartographic Boundaries
 - 1/50 000 NTS MapSheet
 - 1/250 000 NTS MapSheet
- Base maps
 - Gouvernement du Québec
 - Gouvernement du Québec imagery
 - Google Maps

Consultation by Map

Map Content

Categories Layers

- Non-exclusive Leases for SMS (BNE)
- My Titles (BNE)
- My Delegated Titles (BNE)
- Lapsed (BNE)
- Mining Sites
- SMS Site - Open
- SMS Site - Open with conditions
- SMS Site - Closed
- SMS Site - Pending

Use the "Layer Arrangement" tab to move the map layers and arrange them in priority order. Those that appear at the top of the list will be displayed first.

Translucidity can also be added to a given map layer. To do this, click on the arrow to the extreme right of the layer, select "translucidity" and select the level of translucidity you want.

Display Mode
Fit Layer
Translucidity: 27
Scale bands
Rename
Remove

There are two polygon selection modes available.

- 1) Consult register: When you click on a mining title on the map, information about the title will be displayed in a new window.
- 2) Selection for a form: Click on a polygon to add it to the list for a form (Notice of map designation, work declaration form, etc.) **Note: You must be identified as a GESTIM member in order to access this tool.**

Map Content

Selections

Selection Mode

Consult register

Notice of Map Designatic

#Request : 1714967

1 Selected items

32G11 1 item(s)

X:0016/0053,0

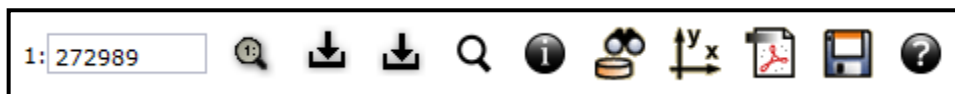
Submit Clear

Map designation of claims is governed by cells of 30 seconds of latitude by 30 seconds of longitude, whole or partial, or cells in the shape of lots or mining blocks, whole or partial. The Minister may, after the publication of an "Avis de modification des limites de terrains" on the GESTIM Plus FTP site, change the shape and the area of the requested claim. The delimitation of land on the map is made at the time of granting the requested claim. Priority is given to the cells of 30 seconds by 30 seconds.

As would be the case in a virtual store, the claims selected by the user are placed in a "shopping basket". They can be viewed by clicking on the icon or removed by clicking on .

Consultation by Map

4. Tool Bar and Functions

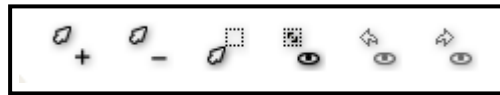


	Tag	View	Comment
	Define display scale		Used to access the map at the display scale entered in the "Digital scale" section
	Add shapefile		Used to add data to the map from shapefiles
	Add KML or GPX		Used to add data to the map from <i>KML</i> or <i>GPX</i> files
	Search and locate		Used to search the map by place name, civic address, postal code, township, seigneurie, SNRC sheet 1:50 000.
	Information		Click on the desired element to view attribute information from the searchable layers activated in the "Legend" tab of the "Map Content" section.
	Create a custom layer		Used to create layers from Québec's Register of real, mining and immovable rights and display the results on the map. (See p. 9)
	Coordinate readout		Click on the map to obtain the location's coordinates. The geographic and Universal Transverse Mercator coordinate systems are displayed under the geodesic reference system NAD 83.
	View PDF map		Click to display a map in PDF format to a scale of 1:50 000.
	Save		Save a map with all the displayed layers (for GESTIM members only).
	Help		Click to consult the complete guide to consulting GESTIM by map.

Consultation by Map

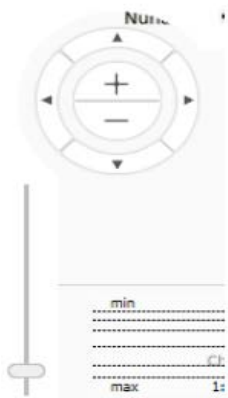
5. Navigation Tools

On the new GESTIM interactive map, the map scale can now be changed using the mouse wheel. This was not possible on the old map.



	Tag	Remark
	Zoom in	Centre the tool on the map window to zoom in.
	Zoom out	Centre the tool on the map window to zoom out.
	Zoom box	Use the mouse to draw a box and zoom into a specific place on the map.
	Reframe all	Use to reframe the map on all the layers checked in the map content.
	Previous map window	Use to go back to the previous map view.
	Next map window	Use to go back to the next map view after using the "Previous map window" tool.

Navigation wheel



The navigation wheel has three functions that can be used to navigate the map.

More (+) and less (-): Use these signs to zoom in or zoom out.

Arrows: Use the arrows to move from left to right or top to bottom of the map.

Scroll bar: Use this tool to zoom in or zoom out.

Consultation by Map

6. Consulting Titles

Map Content

- Active titles
 - Authorizations without lease (ASB)
 - Exclusive Leases for SMS (BEX)
 - Mining Leases (BM)
 - Non-exclusive Leases for SMS (BNE)
 - Claims (CL, CLD, CDC)**
 - Mining Concessions (CM)
- Titles pending
 - Map Designation
 - Mandatory Period
 - Available Land
 - Titles pending (CDC)**
- Lapsed Titles
- Surface Mineral Substances
- Restrictions to mining
- Agreements
- Mining Sites
- Conversion / Substitution
- SIGÉOM (Geology)
- Administrative Boundaries
- Cartographic Boundaries
- Base maps
- My Titles (privilege member)
- My Delegated Titles (privilege member)

Tools Measurements Data Sources Edit Other functions

1: 136495

Place the cursor over a title to display summary information in a pop-up box.

Active CLAIM
32C05 X 0024 0029 0
CDC-2289964 (A)
Explorations Carat inc. (Les) (12443) (100%)

Click on a title in Consult Register mode (see p.5) to display detailed information about the title: title history, area covered, title status, work reports, etc.

Territory : 32C05 X 0024 0029 0

Map Sheet : (32C05) **Type of Territory :** Map Sheet
Township/Seigniory : 0024 **Type of Polygon :** Cell 30" X 30"
Row : 0029 **Area of Polygon* :** 57,14
Column : 0 **Restrictions to Mining Activities :** No
Part : 0 **Opening Date :** 2000/11/22
Pricing Territory : South **Registration Cost :** 65,25 \$
Polygon Number :** 403576233 **Administrative Region :** Abitibi-Témiscamingue
MRC : Abitibi **Municipality :** Barraute


* The area of the polygon may be different from the area of the stated area of a title ** For internal use only.

Titles	
CDC2289964 (A)	Mining Title
CDC2179754 (E)	

Information on Title	
Title Number	CDC2289964
Status	Active
Area	57,14
Date of Registration	2011/05/04
Expiration Date	2020/10/30
Date of Designation	2011/03/21
Discovery of mineral substances containing 0,1% or more of triuranium octoxide (U₃O₈)	No
Number of Renewals***	4
Amount of Excess Work	0,00 \$
Amount of Work Necessary for Renewal	1 800,00 \$

Consultation by Map

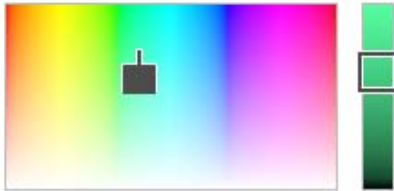
7. Custom Layer

To create a custom layer, click on  and select the type of query you wish to make. Then enter a name for the query, along with a short description (optional), and choose a display colour

In this example, titles are searched by criteria, except BNE. The purpose is to identify active titles held by a specific company.

2) Enter a name for the query. The description is

3) Choose an element colour and fill colour (optional).



4) If you are looking for titles held by a specific titleholder, enter the titleholder's name or number and click on Search. The titleholder will be highlighted in the list and must then be selected from the list.

7) You can limit the search by entering a registration date and/or an expiry date.

8) Select the status(es).

For the remainder of the form, simply state whether substances containing at least 0.1% of U_3O_8 have been discovered, and whether the titles are located in a mining-incompatible area.

Create Custom Layer

Type of search:

Name:

Description:

Colour of element:

Fill colour: Transparent

Sample of the element:

1) Select a type of query.

- Search Titles by Criteria (Except BNE)
- Search SMS Sites by Criteria
- Search Work by Criteria
- Search for Titles Within a Reference Circle (Excess Work Credits)
- Search Mining Sites by Criteria
- Search Annual report of work by Criteria

Search Titles by Criteria

Titleholder(s)

Identify Titleholder:

Number	Name	Address	City	Postal Code	Province / State	Country
96947	Bouffard, René-Michel	5700, 4e Avenue Ouest	Québec	G1H 6R1	Quebec	Canada

Group of Titles

Number of the Group: Ex: 1,12,324,1021...

Titles

Type:

Title number:

Range: To:

A search by interval is not possible if the title number includes letters.

Date of Registration

Registered since: yyyy/mm/dd

Since: days

Start: End:

Expiration Date

Expired since: yyyy/mm/dd

Within: days

Start: End: yyyy/mm/dd

Status All Statuses

Abandoned(B) Pending(D) Refused at Renewal(N)

Active(A) Proposed CDC(Y) Renewal Pending(P)

Cancelled(F) Referred(K) Revoked(R)

Converted(C) Refusal by the Minister(U) Suspended(S)

Divided(X) Refusal by the Registrar(G) Under Litigation(L)

Expired(E)

Discovery of Triuranium Octoxide (U_3O_8)

Discovery of mineral substances containing 0.1% or more of Triuranium Octoxide

Yes No

Queries regarding the discovery of triuranium octoxide apply only to claims.

Mining incompatible territories

Titles located in a mining-incompatible territory

Yes No

1) Select a type of query.

Search Titles by Criteria (Except BNE)
 Search SMS Sites by Criteria
 Search Work by Criteria
 Search for Titles Within a Reference Circle (Excess Work Credits)
 Search Mining Sites by Criteria
 Search Annual report of work by Criteria

5) If you have a group title number, enter it here.

6) You must then select the type of title.

Consultation by Map

Custom Layer Results

The screenshot displays the GESTIM web application interface. On the left, the 'Map Content' panel is open, showing a list of layers under the 'Layers' tab. The 'Custom Layer' is checked and highlighted with a red box. The main map area shows a grid of land parcels with various colored overlays (blue, green, orange) and labels like 'Avenue Larivière', 'Lac Moore', and 'Lac Vallet'. The top toolbar includes navigation and tool icons.

The result is displayed on the map and the layer is shown in the display menu. In the above example, the result of the query is shown in green, as requested in step 3 on the previous page. The colour can be changed by clicking on the colour box in the legend.

The check box can be used to display the custom layer. To remove it, click on the arrow to the right of the layer name and then click on "Remove".

