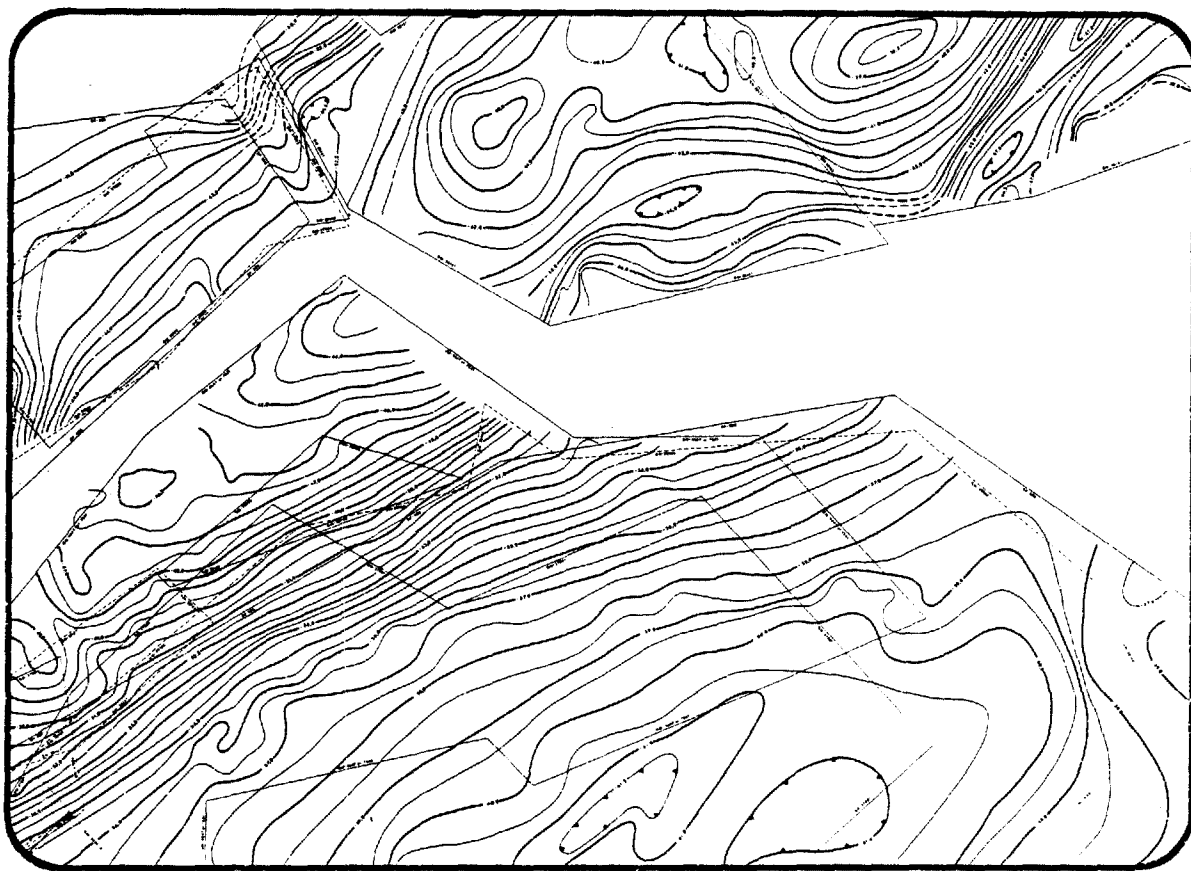


# BIBLIOGRAPHIE GRAVIMÉTRIQUE

## Anomalies de Bouguer



### *Basses Terres du Saint-Laurent*



Gouvernement du Québec  
Ministère de l'Énergie et des Ressources  
Direction des hydrocarbures

BIBLIOGRAPHIE GRAVIMETRIQUE

Cette bibliographie gravimétrique qui accompagne les cartes de compilation à 1:50 000 et 1:250 000 contient la liste des documents consultés. Ils proviennent, soit du Ministère, soit des diverses Sociétés d'exploration et couvrent les travaux effectués durant la période 1955-77. Les références sont inscrites dans la langue du document consulté.

La présentation est faite selon le découpage du Système National de référence cartographique (SNRC). La première partie (pages 1 à 45) indique les documents relatifs aux 30 cartes produites à 1:50 000 et la seconde (pages 46 à 58) les documents se rapportant aux 4 cartes à 1:250 000. Il est à noter que ces dernières proviennent de l'assemblage d'une réduction photographique des cartes à 1:50 000.

SNRC 21L/04

GM 027733

SHELL QUEBEC LTD., ST-LAWRENCE LOWLANDS, QUEBEC,  
REPORT ON EXPLORATION ACTIVITIES ON MINERAL  
EXPLORATION LICENCE N° 369 FOR THE 1970/71 LICENCE  
YEAR, BY SHELL QUEBEC LTD., 1971, GM 27733  
21L/04, 21L/05

GM 028164

SHELL QUEBEC LTD., ST-LAWRENCE LOWLANDS, QUEBEC,  
REPORT ON EXPLORATION ACTIVITIES ON MINERAL  
EXPLORATION LICENCE N° 197 FOR THE 1971/72 LICENCE  
YEAR, BY SHELL QUEBEC LTD., 1972, GM 28164  
21L/04, 21L/05, 21L/12

SNRC 21L/05

GM 004647

IMPERIAL OIL LTD., ST-LAWRENCE LOWLANDS, QUEBEC,  
SUMMARY REPORT ON EXPLORATORY WORK DONE IN THE ST-  
LAWRENCE LOWLANDS, BY LOWLANDS EXPLORATION LTD.,  
1955-56 GM 4647  
21L/05, 21L/12, 31H/11, 31H/12, 31H/14, 31I/01,  
31I/02, 31I/07, 31I/08, 31I/09

GM 005442-A

LADUBORO OIL LTD., NICOLET COUNTY, QUEBEC, GRAVITY  
SURVEY REPORT, BY JOHNSON G.R., 1957, GM 5442-A  
21L/05, 21L/12, 31I/08

GM 007541

IMPERIAL OIL LTD., ST-LAWRENCE LOWLANDS, QUEBEC,  
SUMMARY REPORT ON EXPLORATORY WORK DONE IN THE ST-  
LAWRENCE LOWLANDS, BY LOWLANDS EXPLORATION LTD.,  
1954-55, GM 7541  
21L/05, 21L/12, 31H/05, 31H/06, 31H/10, 31H/11,  
31H/12, 31H/14, 31H/15, 31I/01, 31I/02, 31I/07,  
31I/08, 31I/09

GM 027081

SHELL QUEBEC LTD., ST-LAWRENCE LOWLANDS, QUEBEC,  
REPORT ON EXPLORATION ACTIVITIES ON MINERAL  
EXPLORATION LICENCE N° 197 FOR THE 1970/71 LICENCE  
YEAR, BY SHELL QUEBEC LTD., 1971, GM 27081  
21L/05, 21L/12, 31I/08

GM 027733

SHELL QUEBEC LTD., ST-LAWRENCE LOWLANDS, QUEBEC,  
REPORT ON EXPLORATION ACTIVITES ON MINERAL  
EXPLORATION LICENCE N° 369 FOR THE 1970/71 LICENCE  
YEAR, BY SHELL QUEBEC LTD., 1971, GM 27733  
21L/04, 21L/05

GM 028164

SHELL QUEBEC LTD., ST-LAWRENCE LOWLANDS, QUEBEC,  
REPORT ON EXPLORATION ACTIVITIES ON MINERAL  
EXPLORATION, LICENCE N° 197 FOR THE 1971/72 LICENCE  
YEAR BY SHELL QUEBEC LTD., 1972, GM 28164  
21L/04, 21L/05, 21L/12

SNRC 21L/05 (suite)

DP 508

MRN, BASSES-TERRES DU ST-LAURENT, QUEBEC, DONNEES  
GRAVIMETRIQUES DANS LES BASSES-TERRES DU ST-LAURENT,  
PAR LES RELEVES GEOPHYSIQUES INC., 1977, DP 508  
21L/05, 21L/11, 21L/12, 31H/06, 31H/07, 31H/10,  
31H/11, 31I/02, 31I/03, 31I/06, 31I/07, 31I/09

DP 508

DEP. NAT. RES., ST-LAWRENCE LOWLANDS, GRAVITY DATA  
IN ST-LAWRENCE LOWLANDS, BY LES RELEVES  
GEOPHYSIQUES INC., 1977, DP508  
21L/05, 21L/11, 21L/12, 31H/06, 31H/07, 31H/10,  
31H/11, 31I/02, 31I/03, 31I/06, 31I/07, 31I/09

SNRC 21L/11

GM 028152

SHELL QUEBEC LTD., ST-LAWRENCE LOWLANDS, QUEBEC,  
REPORT ON EXPLORATION ACTIVITIES ON MINERAL  
EXPLORATION LICENCE N° 504 FOR THE 1971/72 LICENCE  
YEAR, BY SHELL QUEBEC LTD., 1972, GM 28152  
21L/11, 21L/12, 21L/13, 21L/14

DP 508

MRN, BASSES-TERRES DU ST-LAURENT, QUEBEC, DONNEES  
GRAVIMETRIQUES DANS LES BASSES-TERRES DU ST-LAURENT,  
PAR LES RELEVES GEOPHYSIQUES INC., 1977,  
DP 508  
21L/05, 21L/11, 21L/12, 31H/06, 31H/07, 31H/10,  
31H/11, 31H/02, 31I/03, 31I/06 31I/07, 31I/09

DP 508

DEP. NAT. RES., ST-LAWRENCE LOWLANDS, GRAVITY DATA  
IN ST-LAWRENCE LOWLANDS, BY LES RELEVES GEOPHYSIQUES  
INC., 1977, DP 508  
21L/05, 21L/11, 21L/12, 31H/06, 31H/07, 31H/10,  
31H/11, 31I/02, 31I/03, 31I/06, 31I/07, 31I/09

SNRC 21L/12

GM 004647

IMPERIAL OIL LTD., ST-LAWRENCE LOWLANDS, QUEBEC,  
SUMMARY REPORT ON EXPLORATORY WORK DONE IN THE ST-  
LAWRENCE LOWLANDS, BY LOWLANDS EXPLORATION LTD.,  
1955/56, GM 4647  
21L/05, 21L/12, 31H/11, 31H/12, 31H/14, 31I/01,  
31I/02, 31I/07, 31I/08, 31I/09

GM 05442-A

LADUBORO OIL LTD., NICOLET COUNTY, QUEBEC, GRAVITY  
SURVEY REPORT, BY JOHNSON G.R., 1957, GM 5442-A  
21L/05, 21L/12, 31I/08

GM 007541

IMPERIAL OIL LTD., ST-LAWRENCE LOWLANDS, QUEBEC,  
SUMMARY REPORT ON EXPLORATORY WORK DONE IN THE ST-  
LAWRENCE LOWLANDS, BY LOWLANDS EXPLORATION LTD.,  
1954/55, GM 7541  
21L/05, 21L/12, 31H/05, 31H/06, 31H/10, 31H/11,  
31H/12, 31H/14, 31H/15, 31I/01, 31I/02, 31I/07,  
31I/08, 31I/09

GM 027081

SHELL QUEBEC LTD., ST-LAWRENCE LOWLANDS, QUEBEC,  
REPORT ON EXPLORATION ACTIVITIES ON MINERAL  
EXPLORATION LICENCE N° 197 FOR THE 1970/71 LICENCE  
YEAR, BY SHELL QUEBEC LTD., 1971, GM 27081  
21L/05, 21L/12, 31I/08

GM 027084

SHELL QUEBEC LTD., ST-LAWRENCE LOWLANDS, QUEBEC,  
REPORT ON EXPLORATION ACTIVITIES ON MINERAL  
EXPLORATION LICENCE N° 256 FOR THE 1970/71 LICENCE  
YEAR, BY SHELL QUEBEC LTD., 1971, GM 27084  
21L/12, 31I/08, 31I/09

GM 027085

SHELL QUEBEC LTD., ST-LAWRENCE LOWLANDS, QUEBEC,  
REPORT ON EXPLORATION ACTIVITIES ON MINERAL  
EXPLORATION LICENCE N° 257 FOR THE 1970/71 LICENCE  
YEAR, BY SHELL QUEBEC LTD., 1971, GM 27085  
21L/12, 31I/09



SNRC 21L/12 (suite)

GM 028147

SHELL QUEBEC LTD., ST-LAWRENCE LOWLANDS, QUEBEC,  
REPORT ON EXPLORATION ACTIVITIES ON MINERAL  
EXPLORATION LICENCE N° 256 FOR THE 1971/72 LICENCE  
YEAR, BY SHELL QUEBEC LTD., 1972, GM 28147  
21L/12, 31I/08, 31I/09

GM 028148

SHELL QUEBEC LTD., ST-LAWRENCE LOWLANDS, QUEBEC,  
REPORT ON EXPLORATION ACTIVITIES ON MINERAL  
EXPLORATION LICENCE N° 257 FOR THE 1971/72 LICENCE  
YEAR, BY SHELL QUEBEC LTD., 1972 GM 28148  
21L/12

GM 028151

SHELL QUEBEC LTD., ST-LAWRENCE LOWLANDS, QUEBEC,  
REPORT ON EXPLORATION ACTIVITIES ON MINERAL  
EXPLORATION LICENCE N° 503 FOR THE 1971/72 LICENCE  
YEAR, BY SHELL QUEBEC LTD., 1972, GM 28151  
21L/12, 21L/13

GM 028152

SHELL QUEBEC LTD., ST-LAWRENCE LOWLANDS, QUEBEC,  
REPORT ON EXPLORATION ACTIVITIES ON MINERAL  
EXPLORATION LICENCE N° 504 FOR THE 1971/72 LICENCE  
YEAR BY SHELL QUEBEC LTD., 1972, GM 28152  
21L/11, 21L/12, 21L/13, 21L/14

GM 028164

SHELL QUEBEC LTD., ST-LAWRENCE LOWLANDS, QUEBEC,  
REPORT ON EXPLORATION ACTIVITIES ON MINERAL  
EXPLORATION LICENCE N° 197 FOR THE 1971/72 LICENCE  
YEAR, BY SHELL QUEBEC LTD., 1972, GM 28164  
21L/04, 21L/05, 21L/12

DP 508

MRN, BASSES-TERRES DU ST-LAURENT, QUEBEC, DONNEES  
GRAVIMETRIQUES DANS LES BASSES-TERRES DU ST-LAURENT,  
PAR LES RELEVES GEOPHYSIQUES INC., 1977, DP 508  
21L/05, 21L/11, 21L/12, 31H/06, 31H/07, 31H/10,  
31H/11, 31O/02, 31I/03, 31I/06, 31I/07, 31I/09

SNRC 21L/12(SUITE)

DP 508

DEP. NAT. RES., ST-LAWRENCE LOWLANDS, GRAVITY DATA  
IN ST-LAWRENCE LOWLANDS, BY LES RELEVES GEOPHYSIQUES  
INC, 1977, DP 508  
21L/05, 21L/11, 21L/12, 31H/06, 31H/07, 31H/10,  
31H/11, 31I/02, 31I/03, 31I/06, 31I/07, 31I/09

SNRC 21 L/13

GM 028151

SHELL QUEBEC LTD., ST-LAWRENCE LOWLANDS, QUEBEC,  
REPORT ON EXPLORATION ACTIVITIES ON MINERAL  
EXPLORATION LICENCE N° 503 FOR THE 1971/72 LICENCE  
YEAR, BY SHELL QUEBEC LTD., 1972, GM 28151  
21L/12, 21L/13

GM 028152

SHELL QUEBEC LTD., ST-LAWRENCE LOWLANDS, QUEBEC,  
REPORT ON EXPLORATION ACTIVITIES ON MINERAL  
EXPLORATION LICENCE N° 504 FOR THE 1971/72 LICENCE  
YEAR, BY SHELL QUEBEC LTD., 1972, GM 28152  
21L/11, 21L/12, 21L/13, 21L/14

SNRC 21 L/14

GM 026110

SISQUE COMPANY LTD., ILE D'ORLEANS AREA, QUEBEC,  
GRAVITY METER FINAL REPORT, BY SIEVER R.W., 1970,  
GM 26110  
21L/14, 21L/15, 21L/16, 21M/01, 21M/02, 21M/07

GM 028152

SHELL QUEBEC LTD., ST-LAWRENCE LOWLANDS, QUEBEC,  
REPORT ON EXPLORATION ACTIVITIES ON MINERAL  
EXPLORATION LICENCE N° 504 FOR THE 1971/72 LICENCE  
YEAR, BY SHELL QUEBEC LTD, 1972, GM 28152  
21L/11, 21L/12, 21L/13, 21L/14

SNRC 21 L/15 .

GM 026110

SISQUE COMPANY LTD., ILE D'ORLEANS AREA, QUEBEC  
GRAVITY METER FINAL REPORT, BY SIEVER R.W., 1970,  
GM 26110  
21L/14, 21L/15, 21L/16, 21M/01, 21M/02, 21M/07

SNRC 21 L/16

GM 026110

SISQUE COMPANY LTD., ILE D'ORLEANS AREA, QUEBEC,  
GRAVITY METER FINAL REPORT, BY SIEVER R.W., 1970,  
GM 26110  
21L/14, 21L/15, 21L/16, 21M/01, 21M/02, 21M/07

SNRC 21M/01

GM 026110

SISQUE COMPANY LTD., ILE D'ORLEANS AREA, QUEBEC  
GRAVITY METER FINAL REPORT, BY SIEVER R.W., 1970,  
GM 26110  
21L/14, 21L/15, 21L/16, 21M/01, 21M/02, 21M/07

SNRC 21M/02

GM 026110

SISQUE COMPANY LTD., ILE D'ORLEANS AREA, QUEBEC,  
GRAVITY METER FINAL REPORT, BY SIEVER R.W., 1970,  
GM 26110  
21L/14, 21L/15, 21L/16, 21M/01, 21M/02, 21M/07



SNRC 21M/07

GM 026110

SISQUE COMPANY LTD., ILE D'ORLEANS AREA, QUEBEC  
GRAVITY METER FINAL REPORT, BY SIEVER R.W., 1970,  
GM 26110  
21L/14, 21L/15, 21L/16, 21M/01, 21M/02, 21M/07

SNRC 31G/09

GM 025423

SOQUEM, COMTE D'ARGENTEUIL, QUEBEC, RAPPORT DE  
GRAVITE, PAR BOURASSA R., 1969, GM 25423  
31G/09

GM 027183

SOQUEM, COMTE D'ARGENTEUIL, QUEBEC, RELEVÉ  
GRAVIMÉTRIQUE, PAR LAVOIE C., 1971, GM 27183  
31G/09

GM 028044

SOQUEM, COMTE D'ARGENTEUIL, QUEBEC, RAPPORT  
GÉOPHYSIQUE, PAR LAVOIE C., 1972, GM 28044  
31G/09

SNRC 31H/03

GM 024046

EASTERN CANADA GAS AND OIL LTD., ST-JEAN, IBERVILLE  
AND NAPIERVILLE COUNTIES, QUEBEC, REPORT ON GRAVITY  
SURVEY, BY JOHNSON G.R., 1956, GM 24046  
31H/03, 31H/06

SNRC 31H/05

GM 007541

IMPERIAL OIL LTD, ST-LAWRENCE LOWLANDS, QUEBEC,  
SUMMARY REPORT ON EXPLORATORY WORK DONE IN THE ST-  
LAWRENCE LOWLANDS, BY LOWLANDS EXPLORATION LTD.,  
1954/55, GM 7541  
21L/05, 21L/12, 31H/05, 31H/06, 31H/10, 31H/11,  
31H/12, 31H/14, 31H/15, 31I/01, 31I/02, 31I/07,  
31I/08, 31I/09

GM 024047

EASTERN CANADA GAS AND OIL LTD., LA PRAIRIE, LASALLE  
AND LONGUEUIL SEIG., QUEBEC, GRAVITY REPORT, BY  
JOHNSON G.R., 1957, GM 24047  
31H/05, 31H/06, 31H/11, 31H/12

GM 024048

OKALTA OILS LTD., ILE JESUS SEIG, QUEBEC, ILE JESUS  
PROGRESS REPORT N° 1, BY BELL W.D., 1957, GM 24048  
31H/05, 31H/11, 31H/12, 31H/13, 31H/14

SNRC 31H/06

GM 007541

IMPERIAL OIL LTD., ST-LAWRENCE LOWLANDS, QUEBEC,  
SUMMARY REPORT ON EXPLORATORY WORK DONE IN THE ST-  
LAWRENCE LOWLANDS, BY LOWLANDS EXPLORATION LTD.,  
1954/55, GM 7541  
21L/05, 21L/12, 31H/05, 31H/06, 31H/10, 31H/11,  
31H/12, 31H/14, 31H/15, 31I/01, 31I/02, 31I/07,  
31I/08, 31I/09

GM 024046

EASTERN CANADA GAS AND OIL LTD., ST-JEAN, IBERVILLE  
AND NAPIERVILLE COUNTIES, QUEBEC, REPORT ON GRAVITY  
SURVEY, BY JOHNSON G.R., 1956, GM 24046  
31H/03, 31H/06

GM 024047

EASTERN CANADA GAS AND OIL LTD., LA PRAIRIE, LASALLE  
AND LONGUEUIL SEIG., QUEBEC, GRAVITY REPORT, BY  
JOHNSON G.R., 1957, GM 24047  
31H/05, 31H/06, 31H/11, 31H/12

DP 508

MRN, BASSES-TERRES DU ST-LAURENT, QUEBEC, DONNEES  
GRAVIMETRIQUES DANS LES BASSES-TERRES DU ST-LAURENT,  
PAR LES RELEVES GEOPHYSIQUES INC., 1977, DP 508  
21L/05, 21L/11, 21L/12, 31H/06, 31H/07, 31H/10,  
31H/11, 31I/02, 31I/03, 31I/06, 31I/07, 31I/09

DP 508

DEP. NAT. RES., ST-LAWRENCE LOWLANDS, GRAVITY DATA  
IN ST-LAWRENCE LOWLANDS, BY LES RELEVES GEOPHYSIQUES  
INC., 1977, DP 508  
21L/05, 21L/11, 21L/12, 31H/06, 31H/07, 31H/10,  
31H/11, 31I/02, 31I/03, 31I/06, 31I/07, 31I/09

SNRC 31H/07

DP 508

MRN, BASSES-TERRES DU ST-LAURENT, QUEBEC, DONNEES  
GRAVIMETRIQUES DANS LES BASSES-TERRES DU ST-LAURENT,  
PAR LES RELEVES GEOPHYSIQUES INC, 1977, DP 508  
21L/05, 21L/11, 21L/12, 31H/06, 31H/07, 31H/10,  
31H/11, 31I/02, 31I/03, 31I/06, 31I/07, 31I/09

DP 508

DEP. NAT.RES., ST-LAWRENCE LOWLANDS, GRAVITY DATA IN  
ST-LAWRENCE LOWLANDS, BY LES RELEVES GEOPHYSIQUES  
INC., 1977, DP 508  
21L/05, 21L/11, 21L/12, 31H/06, 31H/07, 31H/10,  
31H/11, 31I/02, 31I/03, 31I/06, 31I/07, 31I/09

SNRC 31H/09

GM 026204

SHELL QUEBEC LTD., ST-LAWRENCE LOWLANDS, QUEBEC,  
REPORT ON EXPLORATION ACTIVITIES ON MINERAL  
EXPLORATION LICENCE N° 197 FOR THE 1969/70 LICENCE  
YEAR, BY SHELL QUEBEC LTD., 1970, GM 26204  
31H/09, 31H/10, 31H/15, 31H/16

GM 026209

SHELL QUEBEC LTD., ST-LAWRENCE LOWLANDS, QUEBEC,  
REPORT ON EXPLORATION ACTIVITIES ON MINERAL  
EXPLORATION LICENCE N° 368 FOR THE 1969/70 LICENCE  
YEAR, BY SHELL QUEBEC LTD., 1970, GM 26209  
31H/09, 31H/10, 31H/15, 31H/16

SNRC 31H/10

GM 007541

IMPERIAL OIL LTD., ST-LAWRENCE LOWLANDS, QUEBEC,  
SUMMARY REPORT ON EXPLORATORY WORK DONE IN THE ST-  
LAWRENCE LOWLANDS, BY LOWLANDS EXPLORATION LTD.,  
1954/55, GM 7541  
21L/05, 21L/12, 31H/05, 31H/06, 31H/10, 31H/11,  
31H/12, 31H/14, 31H/15, 31I/01, 31I/02, 31I/07,  
31I/08, 31I/09

GM 026204

SHELL QUEBEC LTD., ST-LAWRENCE LOWLANDS, QUEBEC,  
REPORT ON EXPLORATION ACTIVITIES ON MINERAL  
EXPLORATION LICENCE N° 197 FOR THE 1969/70 LICENCE  
YEAR, BY SHELL QUEBEC LTD, 1970, GM 26204  
31H/09, 31H/10, 31H/15, 31H/16

GM 026209

SHELL QUEBEC LTD., ST-LAWRENCE LOWLANDS, QUEBEC,  
REPORT ON EXPLORATION ACTIVITIES ON MINERAL  
EXPLORATION LICENCE N° 368 FOR THE 1969/70 LICENCE  
YEAR, BY SHELL QUEBEC LTD., 1970, GM 26209  
31H/09, 31H/10, 31H/15, 31H/16

GM 026832

LA SOCIETE ACADIENNE DE RECHERCHES PETROLIERES  
LTEE., ST-LAWRENCE LOWLANDS, QUEBEC, GRAVITY SURVEY,  
BY OVERLAND EXPLORATION SERVICES LTD., 1969, GM  
26832  
31H/10, 31H/11, 31H/14, 31H/15, 31I/02, 31I/03

DP 508

MRN, BASSES-TERRES DU ST-LAURENT, QUEBEC, DONNEES  
GRAVIMETRIQUES DANS LES BASSES-TERRES DU ST-LAURENT,  
PAR LES RELEVES GEOPHYSIQUES INC., 1977, DP 508  
21L/05, 21L/11, 21L/12, 31H/06, 31H/07, 31H/10,  
31H/11, 31I/02, 31I/03, 31I/06, 31I/07, 31I/09

DP 508

DEP. NAT. RES., ST-LAWRENCE LOWLANDS, GRAVITY DATA  
IN ST-LAWRENCE LOWLANDS, BY LES RELEVES GEOPHYSIQUES  
INC., 1977, DP 508  
21L/05, 21L/11, 21L/12, 31H/06, 31H/07, 31H/10,  
31H/11, 31I/02, 31I/03, 31I/06, 31I/07, 31I/09



SNRC 31H/11

GM 003954-B

OIL SELECTIONS LTD., L'ASSOMPTION SEIG., QUEBEC,  
REPORT ON GRAVITY SURVEY, BY JOHNSON G.R., 1956,  
GM 3954-B  
31H/11, 31H/12, 31H/13, 31H/14

GM 004647 .

IMPERIAL OIL LTD., ST-LAWRENCE LOWLANDS, QUEBEC,  
SUMMARY REPORT ON EXPLORATORY WORK DONE IN THE ST-  
LAWRENCE LOWLANDS, BY LOWLANDS EXPLORATION LTD,  
1955/56, GM 4647  
21L/05, 21L/12, 31H/11, 31H/12, 31H/14, 31I/01,  
31I/02, 31I/07, 31I/08, 31I/09

GM 007541

IMPERIAL OIL LTD., ST-LAWRENCE LOWLANDS, QUEBEC,  
SUMMARY REPORT ON EXPLORATORY WORK DONE IN THE ST-  
LAWRENCE LOWLANDS, BY LOWLANDS EXPLORATION LTD.,  
1954/55, GM 7541  
21L/05, 21L/12, 31H/05, 31H/06, 31H/10, 31H/11,  
31H/12, 31H/14, 31H/15, 31I/01, 31I/02, 31I/07,  
31I/08, 31I/09

GM 024047

EASTERN CANADA GAS AND OIL LTD., LA PRAIRIE, LASALLE  
AND LONGUEUIL SEIG., QUEBEC, GRAVITY REPORT, BY  
JOHNSON G.R., 1957, GM 24047  
31H/05, 31H/06, 31H/11, 31H/12

GM 024048

OKALTA OILS LTD., ILE JESUS SEIG., QUEBEC, ILE JESUS  
PROGRESS REPORT N° 1, BY BELL W.D., 1957, GM 24048  
31H/05, 31H/11, 31H/12, 31H/13, 31H/14

GM 026832

LA SOCIETE ACADIENNE DE RECHERCHES PETROLIERES  
LTEE., ST-LAWRENCE LOWLANDS, QUEBEC, GRAVITY SURVEY,  
BY OVERLAND EXPLORATION SERVICES LTD., 1969, GM  
26832  
31H/10, 31H/11, 31H/14, 31H/15, 31I/02, 31I/03

SNRC 31H/11 (SUITE)

GM 028434

DEVELOPMENT AIGLE D'OR, ST-LAWRENCE LOWLANDS,  
QUEBEC, OIL AND GAS RESOURCES OF QUEBEC PERMIT 514,  
BY CLARK T.H., 1972, GM 28434  
31H/11, 31H/12, 31H/13, 31H/14

DP 508

MRN, BASSES-TERRES DU ST-LAURENT, QUEBEC, DONNEES  
GRAVIMETRIQUES DANS LES BASSES-TERRES DU ST-LAURENT,  
PAR LES RELEVES GEOPHYSIQUES INC., 1977, DP 508  
21L/05, 21L/11, 21L/12, 31H/06, 31H/07, 31H/10,  
31H/11, 31I/02, 31I/03, 31I/06, 31I/07, 31I/09

DP 508

DEP. NAT. RES., ST-LAWRENCE LOWLANDS, GRAVITY DATA  
IN ST-LAWRENCE LOWLANDS, BY LES RELEVES GEOPHYSIQUES  
INC., 1977, DP 508  
21L/05, 21L/11, 21L/12, 31H/06, 31H/07, 31H/10,  
31H/11, 31I/02, 31I/03, 31I/06, 31I/07, 31I/09

SNRC 31H/12

GM 003954-B

OIL SELECTIONS LTD., L'ASSOMPTION SEIG., QUEBEC,  
REPORT ON GRAVITY SURVEY, BY JOHNSON G.R., 1956,  
GM 3954-B  
31H/11, 31H/12, 31H/13, 31H/14

GM 004647

IMPERIAL OIL LTD., ST-LAWRENCE LOWLANDS, QUEBEC,  
SUMMARY REPORT ON EXPLORATORY WORK DONE IN THE ST-  
LAWRENCE LOWLANDS, BY LOWLANDS EXPLORATION LTD.,  
1955/56, GM 4647  
21L/05, 21L/12, 31H/11, 31H/12, 31H/14, 31I/01,  
31I/02, 31I/07, 31I/08, 31I/09

GM 007541

IMPERIAL OIL LTD., ST-LAWRENCE LOWLANDS, QUEBEC,  
SUMMARY REPORT ON EXPLORATORY WORK DONE IN THE ST-  
LAWRENCE LOWLANDS, BY LOWLANDS EXPLORATION LTD.,  
1954/55, GM 7541  
21L/05, 21L/12, 31H/05, 31H/06, 31H/10, 31H/11,  
31H/12, 31H/14, 31H/15, 31I/01, 31I/02, 31I/07,  
31I/08, 31I/09

GM 024047

EASTERN CANADA GAS AND OIL LTD., LA PRAIRIE, LASALLE  
AND LONGUEUIL SEIG., QUEBEC, GRAVITY REPORT, BY  
JOHNSON G.R., 1957, GM 24047  
31H/05, 31H/06, 31H/11, 31H/12

GM 024048

OKALTA OILS LTD., ILE JESUS SEIG., QUEBEC, ILE JESUS  
PROGRESS REPORT N° 1, BY BELL W.D., 1957, GM 24048  
31H/05, 31H/11, 31H/12, 31H/13, 31H/14

SNRC 31H/12 (SUITE)

GM 028434

DEVELOPMENT AIGLE D'OR, ST-LAWRENCE LOWLANDS,  
QUEBEC, OIL AND GAS RESOURCES OF QUEBEC PERMIT 514,  
BY CLARK T.H., 1972, GM 28434  
31H/11, 31H/12, 31H/13, 31H/14

GM 029032

DEVELOPMENT AIGLE D'OR, ST-LAWRENCE LOWLANDS,  
QUEBEC, GRAVITY SURVEY OF THE L'ASSOMPTION PERMIT,  
BY OVERLAND EXPLORATION SERVICES LTD., 1969,  
GM 29032  
31H/12, 31H/13, 31H/14

SNRC 31H/13

GM 003954-B

OIL SELECTIONS LTD., L'ASSOMPTION SEIG., QUEBEC  
REPORT ON GRAVITY SURVEY, BY JOHNSON G.R., 1956,  
GM 3954-B  
31H/11, 31H/12, 31H/13, 31H/14

GM 024048

OKALTA OILS LTD., ILE JESUS SEIG., QUEBEC, ILE JESUS  
PROGRESS REPORT N° 1, BY BELL W.D., 1957, GM 24048  
31H/05, 31H/11, 31H/12, 31H/13, 31H/14

GM 028434

DEVELOPMENT AIGLE D'OR, ST-LAWRENCE LOWLANDS,  
QUEBEC, OIL AND GAS RESOURCES OF QUEBEC PERMIT 514,  
BY CLARK T.H., 1972, GM 28434  
31H/11, 31H/12, 31H/13, 31H/14

GM 029032

DEVELOPMENT AIGLE D'OR, ST-LAWRENCE LOWLANDS,  
QUEBEC, GRAVITY SURVEY OF THE L'ASSOMPTION PERMIT,  
BY OVERLAND EXPLORATION SERVICES LTD., 1969,  
GM 29032  
31H/12, 31H/13, 31H/14

SNRC 31H/14

GM 003954-B

OIL SELECTIONS LTD., L'ASSOMPTION SEIG., QUEBEC,  
REPORT ON GRAVITY SURVEY, BY JOHNSON G.R., 1956,  
GM 3954-B  
31H/11, 31H/12, 31H/13, 31H/14

GM 004647

IMPERIAL OIL LTD., ST-LAWRENCE LOWLANDS, QUEBEC,  
SUMMARY REPORT ON EXPLORATORY WORK DONE IN THE ST-  
LAWRENCE LOWLANDS, BY LOWLANDS EXPLORATION LTD.,  
1955/56, GM 4647  
21L/05, 21L/12, 31H/11, 31H/12, 31H/14, 31I/01,  
31I/02, 31I/07, 31I/08, 31I/09

GM 007541

IMPERIAL OIL LTD., ST-LAWRENCE LOWLANDS, QUEBEC,  
SUMMARY REPORT ON EXPLORATORY WORK DONE IN THE ST-  
LAWRENCE LOWLANDS, BY LOWLANDS EXPLORATION LTD.,  
1954/55, GM 7541  
21L/05, 21L/12, 31H/05, 31H/06, 31H/10, 31H/11,  
31H/12, 31H/14, 31H/15, 31I/01, 31I/02, 31I/07,  
31I/08, 31I/09

GM 017408

LOUVICOURT GOLDFIELD CORP., L'ASSOMPTION AND  
BERTHIER COUNTIES, QUEBEC, REPORT ON GRAVITY SURVEY,  
BY SIXTY-FIVE DEVELOPMENT LTD., 1965, GM 17408  
31H/14

GM 017419

SENNETERRE METALS GAS AND OIL LTD., L'ASSOMPTION  
COUNTY, QUEBEC, REPORT ON DETAILED GRAVITY SURVEY,  
BY SIXTY-FIVE DEVELOPMENT LTD., 1965, GM 17419  
31H/14

GM 024048

OKALTA OILS LTD., ILE JESUS SEIG., QUEBEC, ILE JESUS  
PROGRESS REPORT N° 1 BY BELL W.D., 1957, GM 24048  
31H/05, 31H/11, 31H/12, 31H/13, 31H/14

SNRC 31H/14 (SUITE)

GM 026832

LA SOCIETE ACADIENNE DE RECHERCHES PETROLIERES  
LTEE., ST-LAWRENCE LOWLANDS, QUEBEC, GRAVITY SURVEY,  
BY OVERLAND EXPLORATION SERVICES LTD., 1969,  
GM 26832  
31H/10, 31H/11, 31H/14, 31H/15, 31I/02, 31I/03

GM 027086

SHELL QUEBEC LTD., ST-LAWRENCE LOWLANDS, QUEBEC,  
REPORT ON EXPLORATION ACTIVITIES ON MINERAL  
EXPLORATION LICENCE N° 258 FOR THE 1970/71 LICENCE  
YEAR. BY SHELL QUEBEC LTD., 1971, GM 27086  
31H/14, 31I/03

GM 027087

SHELL QUEBEC LTD., ST-LAWRENCE LOWLANDS, QUEBEC,  
REPORT ON EXPLORATION ACTIVITIES ON MINERAL  
EXPLORATION LICENCE N° 259 FOR THE 1970/71 LICENCE  
YEAR, BY SHELL QUEBEC LTD., 1971, GM 27087  
31H/14, 31I/03

GM 028149

SHELL QUEBEC LTD., ST-LAWRENCE LOWLANDS, QUEBEC,  
REPORT ON EXPLORATION ACTIVITIES ON MINERAL  
EXPLORATION LICENCE N° 258 FOR THE 1971/72 LICENCE  
YEAR, BY SHELL QUEBEC LTD., 1972, GM 28149  
31H/14, 31I/03

GM 028434

DEVELOPMENT AIGLE D'OR, ST-LAWRENCE LOWLANDS,  
QUEBEC, OIL AND GAS RESOURCES OF QUEBEC PERMIT 514,  
BY CLARK T.H., 1972, GM 28434  
31H/11, 31H/12, 31H/13, 31H/14

GM 029032

DEVELOPMENT AIGLE D'OR, ST-LAWRENCE LOWLANDS,  
QUEBEC, GRAVITY SURVEY OF THE L'ASSOMPTION PERMIT,  
BY OVERLAND EXPLORATION SERVICES LTD., 1969,  
GM 29032  
31H/12, 31H/13, 31H/14

SNRC 31H/14 (SUITE)

DP 228

MRN, REGION DE SOREL, QUEBEC, RELEVÉ GRAVIMÉTRIQUE  
DE LA REGION DE SOREL, PAR GEOMINES LTEE., 1974,  
DP 228  
31H/14, 31H/15, 31I/02, 31I/03



SNRC 31H/15

GM 005732

IMPERIAL OIL LTD., COURVAL, DE GUIRE AND NICOLET  
SEIG., QUEBEC, SUMMARY REPORT ON EXPLORATION WORK IN  
ST-LAWRENCE LOWLANDS, BY LOWLANDS EXPLORATION LTD.,  
1956/57, GM 5732  
31H/15, 31I/01, 31I/02, 31I/07

GM 007541

IMPERIAL OIL LTD., ST-LAWRENCE LOWLANDS, QUEBEC,  
SUMMARY REPORT ON EXPLORATORY WORK DONE IN THE ST-  
LAWRENCE LOWLANDS, BY LOWLANDS EXPLORATION LTD.,  
1954/55, GM 7541  
21L/05, 21L/12, 31H/05, 31H/06, 31H/10, 31H/11,  
31H/12, 31H/14, 31H/15, 31I/01, 31I/02, 31I/07,  
31I/08, 31I/09

GM 016476

IMPERIAL OIL LTD., ST-LAWRENCE LOWLANDS, QUEBEC,  
GRAVITY METER SURVEY, BY SEISMOGRAPH SERVICE  
CORPORATION, 1957, GM 16476  
31H/15, 31I/02, 31I/03, 31I/08

GM 026204

SHELL QUEBEC LTD., ST-LAWRENCE LOWLANDS, QUEBEC,  
REPORT ON EXPLORATION ACTIVITIES ON MINERAL  
EXPLORATION LICENCE N° 197 FOR THE 1969/70 LICENCE  
YEAR, BY SHELL QUEBEC LTD., 1970, GM 26204  
31H/09, 31H/10, 31H/15, 31H/16

GM 026209

SHELL QUEBEC LTD., ST-LAWRENCE LOWLANDS, QUEBEC,  
REPORT ON EXPLORATION ACTIVITIES ON MINERAL  
EXPLORATION LICENCE N° 368 FOR THE 1969/70 LICENCE  
YEAR, BY SHELL QUEBEC LTD., 1970, GM 26209  
31H/09, 31H/10, 31H/15, 31H/16

SNRC 31H/15 (SUITE)

GM 026816

LA SOCIETE ACADIENNE DE RECHERCHES PETROLIERES  
LTEE., ST-LAWRENCE LOWLANDS, QUEBEC, GRAVITY SURVEY,  
BY OVERLAND EXPLORATION SERVICES LTD., 1969,  
GM 26816  
31H/15, 31I/01, 31I/02, 31I/03, 31I/07

GM 026832

LA SOCIETE ACADIENNE DE RECHERCHES PETROLIERES  
LTEE., ST-LAWRENCE LOWLANDS, QUEBEC, GRAVITY SURVEY,  
BY OVERLAND EXPLORATION SERVICES LTD., 1969,  
GM 26832  
31H/10, 31H/11, 31H/14, 31H/15, 31I/02, 31I/03

DP 228

MRN, REGION DE SOREL, QUEBEC, RELEVÉ GRAVIMÉTRIQUE  
DE LA REGION DE SOREL, PAR GEOMINES LTEE., 1974,  
DP 228  
31H/14, 31H/15, 31I/02, 31I/03

SNRC 31H/16

GM 026204

SHELL QUEBEC LTD., ST-LAWRENCE LOWLANDS, QUEBEC,  
REPORT ON EXPLORATION ACTIVITIES ON MINERAL  
EXPLORATION LICENCE N° 197 FOR THE 1969/70 LICENCE  
YEAR, BY SHELL QUEBEC LTD., 1970, GM 26204  
31H/09, 31H/10, 31H/15, 31H/16

GM 026209

SHELL QUEBEC LTD., ST-LAWRENCE LOWLANDS, QUEBEC,  
REPORT ON EXPLORATION ACTIVITIES ON MINERAL  
EXPLORATION LICENCE N° 368 FOR THE 1969/70 LICENCE  
YEAR, BY SHELL QUEBEC LTD., 1970, GM 26209  
31H/09, 31H/10, 31H/15, 31H/16

SNRC 31I/01

GM 004647

IMPERIAL OIL LTD., ST-LAWRENCE LOWLANDS, QUEBEC,  
SUMMARY REPORT ON EXPLORATORY WORK DONE IN THE ST-  
LAWRENCE LOWLANDS, BY LOWLANDS EXPLORATION LTD.,  
1955/56, GM 4647  
21L/05, 21L/12, 31H/11, 31H/12, 31H/14, 31I/01,  
31I/02, 31I/07, 31I/08, 31I/09

GM 005732

IMPERIAL OIL LTD., COURVAL, DE GUIRE AND NICOLET  
SEIG., QUEBEC, SUMMARY REPORT ON EXPLORATION WORK IN  
ST-LAWRENCE LOWLANDS, BY LOWLANDS EXPLORATION LTD.,  
1956/57, GM 5732  
31H/15, 31I/01, 31I/02, 31I/07

GM 007541

IMPERIAL OIL LTD., ST-LAWRENCE LOWLANDS, QUEBEC,  
SUMMARY REPORT ON EXPLORATORY WORK DONE IN THE ST-  
LAWRENCE LOWLANDS, BY LOWLANDS EXPLORATION LTD.,  
1954/55, GM 7541  
21L/05, 21L/12, 31H/05, 31H/06, 31H/10, 31H/11,  
31H/12, 31H/14, 31H/15, 31I/01, 31I/02, 31I/07,  
31I/08, 31I/09

GM 026816

LA SOCIETE ACADIENNE DE RECHERCHES PETROLIERES  
LTEE., ST-LAWRENCE LOWLANDS, QUEBEC, GRAVITY SURVEY,  
BY OVERLAND EXPLORATION SERVICES LTD., 1969,  
GM 26816  
31H/15, 31I/01, 31I/02, 31I/03, 31I/07

SNRC 31I/02

GM 004647

IMPERIAL OIL LTD., ST-LAWRENCE LOWLANDS, QUEBEC,  
SUMMARY REPORT ON EXPLORATORY WORK DONE IN THE ST-  
LAWRENCE LOWLANDS, BY LOWLANDS EXPLORATION LTD.,  
1955/56, GM 4647  
21L/05, 21L/12, 31H/11, 31H/12, 31H/14, 31I/01,  
31I/02, 31I/07, 31I/08, 31I/09

GM 005442-B

LADUBORO OIL LTD., YAMASKA COUNTY, QUEBEC, GRAVITY  
SURVEY REPORT, BY JOHNSON G.R., 1957, GM 5442-B  
31I/02

GM 005732

IMPERIAL OIL LTD., COURVAL, DE GUIRE AND NICOLET  
SEIG., QUEBEC, SUMMARY REPORT ON EXPLORATION WORK IN  
ST-LAWRENCE LOWLANDS, BY LOWLANDS EXPLORATION LTD.,  
1956/57, GM 5732  
31H/15, 31I/01, 31I/02, 31I/07

GM 007541

IMPERIAL OIL LTD., ST-LAWRENCE LOWLANDS, QUEBEC,  
SUMMARY REPORT ON EXPLORATORY WORK DONE IN THE ST-  
LAWRENCE LOWLANDS, BY LOWLANDS EXPLORATION LTD.,  
1954/55, GM 7541  
21L/05, 21L/12, 31H/05, 31H/06, 31H/10, 31H/11,  
31H/12, 31H/14, 31H/15, 31I/01, 31I/02, 31I/07,  
31I/08, 31I/09

GM 016476

IMPERIAL OIL LTD., ST-LAWRENCE LOWLANDS, QUEBEC,  
GRAVITY METER SURVEY, BY SEISMOGRAPH SERVICE  
CORPORATION, 1957, GM 16476  
31H/15, 31I/02, 31I/03, 31I/08

SNRC 31I/02 (SUITE)

GM 026816

LA SOCIETE ACADIENNE DE RECHERCHES PETROLIERES  
LTEE., ST-LAWRENCE LOWLANDS, QUEBEC, GRAVITY SURVEY,  
BY OVERLAND EXPLORATION SERVICES LTD., 1969,  
GM 26816  
31H/15, 31I/01, 31I/02, 31I/03, 31I/07

GM 026832

LA SOCIETE ACADIENNE DE RECHERCHES PETROLIERES  
LTEE., ST-LAWRENCE LOWLANDS, QUEBEC, GRAVITY SURVEY,  
BY OVERLAND EXPLORATION SERVICES LTD., 1969,  
GM 26832  
31H/10, 31H/11, 31H/14, 31H/15, 31I/02, 31I/03

DP 228

MRN, REGION DE SOREL, QUEBEC, RELEVÉ GRAVIMÉTRIQUE  
DE LA RÉGION DE SOREL, PAR GEOMINES LTEE., 1974,  
DP 228  
31H/14, 31H/15, 31I/02, 31I/03

DP 508

MRN, BASSES-TERRES DU ST-LAURENT, QUEBEC, DONNÉES  
GRAVIMÉTRIQUES DANS LES BASSES-TERRES DU ST-LAURENT,  
PAR LES RELEVÉS GÉOPHYSIQUES INC., 1977, DP 508  
21L/05, 21L/11, 21L/12, 31H/06, 31H/07, 31H/10,  
31H/11, 31I/02, 31I/03, 31I/06, 31I/07, 31I/09

DP 508

DEP. NAT. RES., ST-LAWRENCE LOWLANDS, GRAVITY DATA  
IN ST-LAWRENCE LOWLANDS, BY LES RELEVÉS GÉOPHYSIQUES  
INC., 1977, DP 508  
21L/05, 21L/11, 21L/12, 31H/06, 31H/07, 31H/10,  
31H/11, 31I/02, 31I/03, 31I/06, 31I/07, 31I/09

SNRC 31I/03

GM 016476

IMPERIAL OIL LTD., ST-LAWRENCE LOWLANDS, QUEBEC,  
GRAVITY METER SURVEY, BY SEISMOGRAPH SERVICE  
CORPORATION, 1957, GM 16476  
31H/15, 31I/02, 31I/03, 31I/08

GM 026816

LA SOCIETE ACADIENNE DE RECHERCHES PETROLIERES  
LTEE., ST-LAWRENCE LOWLANDS, QUEBEC, GRAVITY SURVEY,  
BY OVERLAND EXPLORATION SERVICES LTD., 1969,  
GM 26816  
31H/15, 31I/01, 31I/02, 31I/03, 31I/07

GM 026832

LA SOCIETE ACADIENNE DE RECHERCHES PETROLIERES  
LTEE., ST-LAWRENCE LOWLANDS, QUEBEC, GRAVITY SURVEY,  
BY OVERLAND EXPLORATION SERVICES LTD., 1969, GM  
26832  
31H/10, 31H/11, 31H/14, 31H/15, 31I/02, 31I/03

GM 027086

SHELL QUEBEC LTD., ST-LAWRENCE LOWLANDS, QUEBEC,  
REPORT ON EXPLORATION ACTIVITIES ON MINERAL  
EXPLORATION LICENCE N° 258 FOR THE 1970/71 LICENCE  
YEAR, BY SHELL QUEBEC LTD., 1971, GM 27086  
31H/14, 31I/03

GM 027087

SHELL QUEBEC LTD., ST-LAWRENCE LOWLANDS, QUEBEC,  
REPORT ON EXPLORATION ACTIVITIES ON MINERAL  
EXPLORATION LICENCE N° 259 FOR THE 1970/71 LICENCE  
YEAR, BY SHELL QUEBEC LTD., 1971, GM 27087  
31H/14, 31I/03

GM 028149

SHELL QUEBEC LTD., ST-LAWRENCE LOWLANDS, QUEBEC,  
REPORT ON EXPLORATION ACTIVITIES ON MINERAL  
EXPLORATION LICENCE N° 258 FOR THE 1971/72 LICENCE  
YEAR, BY SHELL QUEBEC LTD., 1972, GM 28149  
31H/14, 31I/03

SNRC 31I/03 (SUITE)

DP 228

MRN, REGION DE SOREL, QUEBEC, RELEVÉ GRAVIMÉTRIQUE  
DE LA REGION DE SOREL, PAR GEOMINES LITEE., 1974,  
DP 228  
31H/14, 31H/15, 31I/02, 31I/03

DP 508

MRN, BASSES-TERRES DU ST-LAURENT, QUEBEC, DONNÉES  
GRAVIMÉTRIQUES DANS LES BASSES-TERRES DU ST-LAURENT,  
PAR LES RELEVÉS GÉOPHYSIQUES INC., 1977, DP 508  
21L/05, 21L/11, 21L/12, 31H/06, 31H/07, 31H/10,  
31H/11, 31I/02, 31I/03, 31I/06, 31I/07, 31I/09

DP 508

DEP. NAT. RES., ST-LAWRENCE LOWLANDS, GRAVITY DATA  
IN ST-LAWRENCE LOWLANDS, BY LES RELEVÉS GÉOPHYSIQUES  
INC., 1977, DP 508  
21L/05, 21L/11, 21L/12, 31H/06, 31H/07, 31H/10,  
31H/11, 31I/02, 31I/03, 31I/06, 31I/07, 31I/09



SNRC 31I/06

DP 508

MRN, BASSES-TERRES DU ST-LAURENT, QUEBEC, DONNEES  
GRAVIMETRIQUES DANS LES BASSES-TERRES DU ST-LAURENT,  
PAR LES RELEVES GEOPHYSIQUES INC., 1977, DP 508  
21L/05, 21L/11, 21L/12, 31H/06, 31H/07, 31H/10,  
31H/11, 31I/02, 31I/03, 31I/06, 31I/07, 31I/09

DP 508

DEP. NAT. RES., ST-LAWRENCE LOWLANDS, GRAVITY DATA  
IN ST-LAWRENCE LOWLANDS, BY LES RELEVES GEOPHYSIQUES  
INC., 1977, DP 508  
21L/05, 21L/11, 21L/12, 31H/06, 31H/07, 31H/10,  
31H/11, 31I/02, 31I/03, 31I/06, 31I/07, 31I/09

SNRC 31I/07

GM 003565-B

GREAT SWEET GRASS OIL CO., ST-MAURICE COUNTY,  
QUEBEC, REPORT ON GRAVITY SURVEY, BY JOHNSON G.R.,  
1955, GM 3565-B  
31I/07

GM 004647

IMPERIAL OIL LTD., ST-LAWRENCE LOWLANDS, QUEBEC,  
SUMMARY REPORT ON EXPLORATORY WORK DONE IN THE ST-  
LAWRENCE LOWLANDS, BY LOWLANDS EXPLORATION LTD.,  
1955/56, GM 4647  
21L/05, 21L/12, 31H/11, 31H/12, 31H/14, 31I/01,  
31I/02, 31I/07, 31I/08, 31I/09

GM 004932

FANCOTT CLAIMS, CAXTON (AUGM) TOWNSHIP, QUEBEC,  
REPORT ON GRAVITY SURVEY, BY RADAR EXPLORATION CO.  
LTD., 1957, GM 4932  
31I/07

GM 005732

IMPERIAL OIL LTD., COURVAL, DE GUIRE AND NICOLET  
SEIG., QUEBEC, SUMMARY REPORT ON EXPLORATION WORK IN  
ST-LAWRENCE LOWLANDS, BY LOWLANDS EXPLORATION LTD.,  
1956/57, GM 5732  
31H/15, 31I/01, 31I/02, 31I/07

GM 007541

IMPERIAL OIL LTD., ST-LAWRENCE LOWLANDS, QUEBEC,  
SUMMARY REPORT ON EXPLORATORY WORK DONE IN THE ST-  
LAWRENCE LOWLANDS, BY LOWLANDS EXPLORATION LTD.,  
1954/55, GM 7541  
21L/05, 21L/12, 31H/05, 31H/06, 31H/10, 31H/11,  
31H/12, 31H/14, 31H/15, 31I/01, 31I/02, 31I/07,  
31I/08, 31I/09

GM 024044

ALMEGA QUEBEC LTD., CAP-DE-LA-MADELEINE AND  
CHAMPLAIN SEIG., QUEBEC, GRAVITY SURVEY REPORT, BY  
JOHNSON G.R., 1957, GM 24044  
31I/07, 31I/08, 31I/09, 31I/10

SNRC 31I/07 (SUITE)

GM 026816

LA SOCIETE ACADIENNE RECHERCHES PETROLIERES LTEE.,  
ST-LAWRENCE LOWLANDS, QUEBEC, GRAVITY SURVEY, BY  
OVERLAND EXPLORATION SERVICES LTD., 1969, GM 26816  
31H/15, 31I/01, 31I/02, 31I/03, 31I/07

DP 508

MRN, BASSES-TERRES DU ST-LAURENT QUEBEC, DONNEES  
GRAVIMETRIQUES DANS LES BASSES-TERRES DU ST-LAURENT,  
PAR LES RELEVES GEOPHYSIQUES INC., 1977, DP 508  
21L/05, 21L/11, 21L/12, 31H/06, 31H/07, 31H/10,  
31H/11, 31I/02, 31I/03, 31I/06, 31I/07, 31I/09

DP 508

DEP. NAT. RES., ST-LAWRENCE LOWLANDS, GRAVITY DATA  
IN ST-LAWRENCE LOWLANDS, BY LES RELEVES GEOPHYSIQUES  
INC., 1977, DP 508  
21L/05, 21L/11, 21L/12, 31H/06, 31H/07, 31H/10,  
31H/11, 31I/02, 31I/03, 31I/06, 31I/07, 31I/09

SNRC 31I/08

GM 004647

IMPERIAL OIL LTD., ST-LAWRENCE LOWLANDS, QUEBEC,  
SUMMARY REPORT ON EXPLORATORY WORK DONE IN THE ST-  
LAWRENCE LOWLANDS, BY LOWLANDS EXPLORATION LTD.,  
1955/56, GM 4647  
21L/05, 21L/12, 31H/11, 31H/12, 31H/14, 31I/01,  
31I/02, 31I/07, 31I/08, 31I/09

GM 005442-A

LADUBORO OIL LTD., NICOLET COUNTY, QUEBEC, GRAVITY  
SURVEY REPORT, BY JOHNSON G.R., 1957, GM 5442-A  
21L/05, 21L/12, 31I/08

GM 007541

IMPERIAL OIL LTD., ST-LAWRENCE LOWLANDS, QUEBEC,  
SUMMARY REPORT ON EXPLORATORY WORK DONE IN THE ST-  
LAWRENCE LOWLANDS, BY LOWLANDS EXPLORATION LTD.,  
1954/55, GM 7541  
21L/05, 21L/12, 31H/05, 31H/06, 31H/10, 31H/11,  
31H/12, 31H/14, 31H/15, 31I/01, 31I/02, 31I/07,  
31I/08, 31I/09

GM 016476

IMPERIAL OIL LTD., ST-LAWRENCE LOWLANDS, QUEBEC,  
GRAVITY METER SURVEY, BY SEISMOGRAPH SERVICE  
CORPORATION, 1957, GM 16476  
31H/15, 31I/02, 31I/03, 31I/08

GM 024044

ALMEGA QUEBEC LTD., CAP-DE-LA-MADELEINE AND  
CHAMPLAIN SEIG., QUEBEC, GRAVITY SURVEY REPORT, BY  
JOHNSON G.R., 1957, GM 24044  
31I/07, 31I/08, 31I/09, 31I/10

SNRC 31I/08 (SUITE)

GM 024045

BALD MOUNTAIN OIL CO., BATISCAN SEIG., QUEBEC,  
INTERPRETATION OF GRAVITY SURVEY, BY JOHNSON G.R.,  
1957, GM 24045  
31H/03, 31H/06

GM 027081

SHELL QUEBEC LTD., ST-LAWRENCE LOWLANDS, QUEBEC,  
REPORT ON EXPLORATION ACTIVITIES ON MINERAL  
EXPLORATION LICENCE N° 197 FOR THE 1970/71 LICENCE  
YEAR, BY SHELL QUEBEC LTD., 1971, GM 27081  
21L/05, 21L/12, 31I/08

GM 027084

SHELL QUEBEC LTD., ST-LAWRENCE LOWLANDS, QUEBEC,  
REPORT ON EXPLORATION ACTIVITIES ON MINERAL  
EXPLORATION LICENCE N° 256 FOR THE 1970/71 LICENCE  
YEAR, BY SHELL QUEBEC LTD., 1971, GM 27084  
21L/12, 31I/08, 31I/09

GM 28147

SHELL QUEBEC LTD., ST-LAWRENCE LOWLANDS, QUEBEC,  
REPORT ON EXPLORATION ACTIVITIES ON MINERAL  
EXPLORATION LICENCE N° 256 FOR THE 1971/72 LICENCE  
YEAR, BY SHELL QUEBEC LTD., 1972, GM 28147  
21L/12, 31I/08, 31I/09

SNRC 31I/09

GM 004647

IMPERIAL OIL LTD., ST-LAWRENCE LOWLANDS, QUEBEC,  
SUMMARY REPORT ON EXPLORATORY WORK DONE IN THE ST-  
LAWRENCE LOWLANDS, BY LOWLANDS EXPLORATION LTD.,  
1955/56, GM 4647  
21L/05, 21L/12, 31H/11, 31H/12, 31H/14, 31I/01,  
31I/02, 31I/07, 31I/08, 31I/09

GM 007541

IMPERIAL OIL LTD., ST-LAWRENCE LOWLANDS, QUEBEC,  
SUMMARY REPORT ON EXPLORATORY WORK DONE IN THE ST-  
LAWRENCE LOWLANDS, BY LOWLANDS EXPLORATION LTD.,  
1954/55, GM 7541  
21L/05, 21L/12, 31H/05, 31H/06, 31H/10, 31H/11,  
31H/12, 31H/14, 31H/15, 31I/01, 31I/02, 31I/07,  
31I/08, 31I/09

GM024044

ALMEGA QUEBEC LTD., CAP-DE-LA-MADELEINE AND  
CHAMPLAIN SEIG., QUEBEC, GRAVITY SURVEY REPORT, BY  
JOHNSON G.R., 1957, GM 24044  
31I/07, 31I/08, 31I/09, 31I/10

GM 024045

BALD MOUNTAIN OIL CO., BATISCAN SEIG., QUEBEC,  
INTERPRETATION OF GRAVITY SURVEY, BY JOHNSON G.R.,  
1957, GM 24045  
31I/08, 31I/09

GM 027083

SHELL QUEBEC LTD., ST-LAWRENCE LOWLANDS, QUEBEC,  
REPORT ON EXPLORATION ACTIVITIES ON MINERAL  
EXPLORATION LICENCE N° 255 FOR THE 1970/71 LICENCE  
YEAR, BY SHELL QUEBEC LTD., 1971, GM 27083  
31I/09

GM 027084

SHELL QUEBEC LTD., ST-LAWRENCE LOWLANDS, QUEBEC,  
REPORT ON EXPLORATION ACTIVITIES ON MINERAL  
EXPLORATION LICENCE N° 256 FOR THE 1970/71 LICENCE  
YEAR, BY SHELL QUEBEC LTD., 1971, GM 27084  
21L/12, 31I/08, 31I/09

SNRC 31I/09 (SUITE)

GM 027085

SHELL QUEBEC LTD., ST-LAWRENCE LOWLANDS, QUEBEC,  
REPORT ON EXPLORATION ACTIVITIES ON MINERAL  
EXPLORATION LICENCE N° 257 FOR THE 1970/71 LICENCE  
YEAR, BY SHELL QUEBEC LTD., 1971, GM 27085  
21L/12, 31I/09

GM 028146

SHELL QUEBEC LTD., ST-LAWRENCE LOWLANDS, QUEBEC,  
REPORT ON EXPLORATION ACTIVITIES ON MINERAL  
EXPLORATION LICENCE N° 255 FOR THE 1971/72 LICENCE  
YEAR, BY SHELL QUEBEC LTD., 1972, GM 28146  
31I/09

GM 028147

SHELL QUEBEC LTD., ST-LAWRENCE LOWLANDS, QUEBEC,  
REPORT ON EXPLORATION ACTIVITIES ON MINERAL  
EXPLORATION LICENCE N° 256 FOR THE 1971/72 LICENCE  
YEAR, BY SHELL QUEBEC LTD., 1972, GM 28147  
21L/12, 31I/08, 31I/09

DP 508

MRN, BASSES-TERRES DU ST-LAURENT, QUEBEC, DONNEES  
GRAVIMETRIQUES DANS LES BASSES-TERRES DU ST-LAURENT,  
PAR LES RELEVES GEOPHYSIQUES INC., 1977, DP 508  
21L/05, 21L/11, 21L/12, 31H/06, 31H/07, 31H/10,  
31H/11, 31I/02, 31I/03, 31I/06, 31I/07, 31I/09

DP 508

DEP. NAT. RES., ST-LAWRENCE LOWLANDS GRAVITY DATA IN  
ST-LAWRENCE LOWLANDS, BY LES RELEVES GEOPHYSIQUES  
INC., 1977, DP 508  
21L/05, 21L/11, 21L/12, 31H/06, 31H/07, 31H/10,  
31H/11, 31I/02, 31I/03, 31I/06, 31I/07, 31I/09

SNRC 31I/10

GM 024044

ALMEGA QUEBEC LTD., CAP-DE-LA-MADELEINE AND  
CHAMPLAIN SEIG., QUEBEC, GRAVITY SURVEY REPORT, BY  
JOHNSON G.R., 1957, GM 24044  
31I/07, 31I/08, 31I/09, 31I/10



SNRC 21L

GM 004647

IMPERIAL OIL LTD., ST-LAWRENCE LOWLANDS, QUEBEC,  
SUMMARY REPORT ON EXPLORATORY WORK DONE IN THE ST-  
LAWRENCE LOWLANDS, BY LOWLANDS EXPLORATION LTD.,  
1955/56, GM 4647  
21L/05, 21L/12, 31H/11, 31H/12, 31H/14, 31I/01,  
31I/02, 31I/07, 31I/08, 31I/09

GM 05442-A

LADUBORO OIL LTD., NICOLET COUNTY, QUEBEC, GRAVITY  
SURVEY REPORT, BY JOHNSON G.R., 1957, GM 5442-A  
21L/05, 21L/12, 31I/08

GM 007541

IMPERIAL OIL LTD., ST-LAWRENCE LOWLANDS, QUEBEC,  
SUMMARY REPORT ON EXPLORATORY WORK DONE IN THE ST-  
LAWRENCE LOWLANDS, BY LOWLANDS EXPLORATION LTD.,  
1954/55, GM 7541  
21L/05, 21L/12, 31H/05, 31H/06, 31H/10, 31H/11,  
31H/12, 31H/14, 31H/15, 31I/01, 31I/02, 31I/07,  
31I/08, 31I/09

GM 026110

SISQUE COMPANY LTD., ILE D'ORLEANS AREA, QUEBEC,  
GRAVITY METER FINAL REPORT, BY SIEVER R.W., 1970,  
GM 26110  
21L/14, 21L/15, 21L/16, 21M/01, 21M/02, 21M/07

GM 027081

SHELL QUEBEC LTD., ST-LAWRENCE LOWLANDS, QUEBEC,  
REPORT ON EXPLORATION ACTIVITIES ON MINERAL  
EXPLORATION LICENCE N° 197 FOR THE 1970/71 LICENCE  
YEAR, BY SHELL QUEBEC LTD, 1971, GM 27081  
21L/04, 21L/12, 31I/08

GM 027084

SHELL QUEBEC LTD., ST-LAWRENCE LOWLANDS, QUEBEC,  
REPORT ON EXPLORATION ACTIVITIES ON MINERAL  
EXPLORATION LICENCE N° 256 FOR THE 1970/71 LICENCE  
YEAR, BY SHELL QUEBEC LTD., 1971, GM 27084  
21L/12, 31I/08, 31I/09

SNRC 21L (SUITE)

GM 027085

SHELL QUEBEC LTD., ST-LAWRENCE LOWLANDS, QUEBEC,  
REPORT ON EXPLORATION ACTIVITIES ON MINERAL  
EXPLORATION LICENCE N° 257 FOR THE 1970/71 LICENCE  
YEAR, BY SHELL QUEBEC LTD., 1971, GM 27085  
21L/12, 31I/09

GM 027733

SHELL QUEBEC LTD., ST-LAWRENCE LOWLANDS, QUEBEC,  
REPORT ON EXPLORATION ACTIVITIES ON MINERAL  
EXPLORATION LICENCE N° 369 FOR THE 1970/71 LICENCE  
YEAR, BY SHELL QUEBEC LTD., 1971, GM 27733  
21L/04, 21L/05

GM 028147

SHELL QUEBEC LTD., ST-LAWRENCE LOWLANDS, QUEBEC,  
REPORT ON EXPLORATION ACTIVITIES ON MINERAL  
EXPLORATION LICENCE N° 256 FOR THE 1971/72 LICENCE  
YEAR, BY SHELL QUEBEC LTD., 1972, GM 28147  
21L/12, 31I/08, 31I/09

GM 028148

SHELL QUEBEC LTD., ST-LAWRENCE LOWLANDS, QUEBEC,  
REPORT ON EXPLORATION ACTIVITIES ON MINERAL  
EXPLORATION LICENCE N° 257 FOR THE 1971/72 LICENCE  
YEAR, BY SHELL QUEBEC LTD., 1972, GM 28148  
21L/12

GM 028151

SHELL QUEBEC LTD., ST-LAWRENCE LOWLANDS, QUEBEC,  
REPORT ON EXPLORATION ACTIVITIES ON MINERAL  
EXPLORATION LICENCE N° 503 FOR THE 1971/72 LICENCE  
YEAR, BY SHELL QUEBEC LTD., 1972, GM 28151  
21L/12, 21L/13

SNRC 21L (SUITE)

GM 028152

SHELL QUEBEC LTD., ST-LAWRENCE LOWLANDS, QUEBEC,  
REPORT ON EXPLORATION ACTIVITIES ON MINERAL  
EXPLORATION LICENCE N° 504 FOR THE 1971/72 LICENCE  
YEAR, BY SHELL QUEBEC LTD., 1972, GM 28152  
21L/11, 21L/12, 21L/13, 21L/14

GM 028164

SHELL QUEBEC LTD., ST-LAWRENCE LOWLANDS, QUEBEC,  
REPORT ON EXPLORATION ACTIVITIES ON MINERAL  
EXPLORATION LICENCE N° 197 FOR THE 1971/72 LICENCE  
YEAR, BY SHELL QUEBEC LTD., 1972, GM 28164  
21L/04, 21L/05, 21L/12

DP 508

MRN, BASSES-TERRES DU ST-LAURENT, QUEBEC, DONNEES  
GRAVIMETRIQUES DANS LES BASSES-TERRES DU ST-LAURENT,  
PAR LES RELEVES GEOPHYSIQUES INC., 1977, DP 508  
21L/05, 21L/11, 21L/12, 31H/06, 31H/07, 31H/10,  
31H/11, 31I/02, 31I/03, 31I/06, 31I/07, 31I/09

DP 508.

DEP. NAT. RES., ST-LAWRENCE LOWLANDS, GRAVITY DATA  
IN ST-LAWRENCE LOWLANDS, BY LES RELEVES GEOPHYSIQUES  
INC., 1977, DP 508  
21L/05, 21L/11, 21L/12, 31H/06, 31H/07, 31H/10,  
31H/11, 31I/02, 31I/03, 31I/06, 31I/07, 31I/09

SNRC 21M

GM 026110

SISQUE COMPANY LTD, ILE D'ORLEANS AREA, QUEBEC,  
GRAVITY METER FINAL REPORT, BY SIEVER R.W., 1970,  
GM 26110  
21L/14, 21L/15, 21L/16, 21M/01, 21M/02, 21M/07

SNRC 31G

GM 025423

SOQUEM, COMTE D'ARGENTEUIL, QUEBEC, RAPPORT DE  
GRAVITE, PAR BOURASSA R., 1969, GM 25423  
31G/09

GM 027183

SOQUEM, COMTE D'ARGENTEUIL, QUEBEC, RELEVÉ  
GRAVIMÉTRIQUE, PAR LAVOIE C., 1971, GM 27183  
31G/09

GM 028044

SOQUEM, COMTE D'ARGENTEUIL, QUEBEC, RAPPORT  
GÉOPHYSIQUE, PAR LAVOIE C., 1972, GM 28044  
31G/09

SNRC 31H

GM 003954-B

OIL SELECTIONS LTD., L'ASSOMPTION SEIG, QUEBEC,  
REPORT ON GRAVITY SURVEY, BY JOHNSON G.R., 1956,  
GM 3954-B  
31H/11, 31H/12, 31H/13, 31H/14

GM 004647

IMPERIAL OIL LTD., ST-LAWRENCE LOWLANDS, QUEBEC,  
SUMMARY REPORT ON EXPLORATORY WORK DONE IN THE ST-  
LAWRENCE LOWLANDS, BY LOWLANDS EXPLORATION LTD.,  
1955/56, GM 4647  
21L/05, 21L/12, 31H/11, 31H/12, 31H/14, 31I/01,  
31I/02, 31I/07, 31I/08, 31I/09

GM 005732

IMPERIAL OIL LTD., COURVAL, DE GUIRE AND NICOLET  
SEIG., QUEBEC, SUMMARY REPORT ON EXPLORATION WORK IN  
ST-LAWRENCE LOWLANDS, BY LOWLANDS EXPLORATION LTD.,  
1956/57, GM 5732  
31H/15, 31I/01, 31I/02, 31I/07

GM 007541

IMPERIAL OIL LTD., ST-LAWRENCE LOWLANDS, QUEBEC,  
SUMMARY REPORT ON EXPLORATORY WORK DONE IN THE ST-  
LAWRENCE LOWLANDS, BY LOWLANDS EXPLORATION LTD.,  
1954/55, GM 7541  
21L/05, 21L/12, 31H/05, 31H/06, 31H/10, 31H/11,  
31H/12, 31H/14, 31H/15, 31I/01, 31I/02, 31I/07,  
31I/08, 31I/09

GM 016476

IMPERIAL OIL LTD., ST-LAWRENCE LOWLANDS, QUEBEC,  
GRAVITY METER SURVEY, BY SEISMOGRAPH SERVICE  
CORPORATION, 1957, GM 16476  
31H/15, 31I/02, 31I/03, 31I/08

GM 017408

LOUVICOURT GOLDFIELD CORP., L'ASSOMPTION AND  
BERTHIER COUNTIES, QUEBEC, REPORT ON GRAVITY SURVEY,  
BY SIXTY-FIVE DEVELOPMENT LTD., 1965, GM 17408  
31H/14

SNRC 31H (SUITE)

GM 017419

SENNETERRE METALS GAS AND OIL LTD., L'ASSOMPTION COUNTY, QUEBEC, REPORT ON DETAILED GRAVITY SURVEY, BY SIXTY-FIVE DEVELOPMENT LTD., 1965, GM 17419 31H/14

GM 024046

EASTERN CANADA GAS AND OIL LTD., ST-JEAN, IBERVILLE AND NAPIERVILLE COUNTIES, QUEBEC, REPORT ON GRAVITY SURVEY, BY JOHNSON G.R., 1956, GM 24046 31H/03, 31H/06

GM 024047

EASTERN CANADA GAS AND OIL LTD., LA PRAIRIE, LASALLE AND LONGUEUIL SEIG., QUEBEC, GRAVITY REPORT, BY JOHNSON G.R., 1957, GM 24047 31H/05, 31H/06, 31H/11, 31H/12

GM 024048

OKALTA OILS LTD., ILE JESUS SEIG., QUEBEC, ILE JESUS PROGRESS REPORT N° 1, BY BELL W.D., 1957, GM 24048 31H/05, 31H/11, 31H/12, 31H/13, 31H/14

GM 026204

SHELL QUEBEC LTD., ST-LAWRENCE LOWLANDS, QUEBEC, REPORT ON EXPLORATION ACTIVITIES ON MINERAL EXPLORATION LICENCE N° 197 FOR THE 1969/70 LICENCE YEAR BY SHELL QUEBEC LTD., 1970. GM 26204 31H/09, 31H/10, 31H/15, 31H/16

GM 026209

SHELL QUEBEC LTD., ST-LAWRENCE LOWLANDS, QUEBEC, REPORT ON EXPLORATION ACTIVITIES ON MINERAL EXPLORATION LICENCE N° 368 FOR THE 1969/70 LICENCE YEAR, BY SHELL QUEBEC LTD., 1970, GM 26209 31H/09, 31H/10, 31H/15, 31H/16

GM 026816

LA SOCIETE ACADIENNE DE RECHERCHES PETROLIERES LTEE, ST-LAWRENCE LOWLANDS, QUEBEC, GRAVITY SURVEY, BY OVERLAND EXPLORATION SERVICES LTD., 1969, GM 26816 31H/15, 31I/01, 31I/02, 31I/03, 31I/07

SNRC 31H (SUITE)

GM 026832

LA SOCIETE ACADIENNE DE RECHERCHES PETROLIERES  
LTEE., ST-LAWRENCE LOWLANDS, QUEBEC, GRAVITY SURVEY,  
BY OVERLAND EXPLORATION SERVICES LTD., 1969,  
GM 26832  
31H/10, 31H/11, 31H/14, 31H/15, 31I/02, 31I/03

GM 027086

SHELL QUEBEC LTD., ST-LAWRENCE LOWLANDS, QUEBEC,  
REPORT ON EXPLORATION ACTIVITIES ON MINERAL  
EXPLORATION LICENCE N° 258 FOR THE 1970/71 LICENCE  
YEAR, BY SHELL QUEBEC LTD., 1971, GM 27086  
31H/14, 31I/03

GM 027087

SHELL QUEBEC LTD., ST-LAWRENCE LOWLANDS, QUEBEC,  
REPORT ON EXPLORATION ACTIVITIES ON MINERAL  
EXPLORATION LICENCE N° 259 FOR THE 1970/71 LICENCE  
YEAR, BY SHELL QUEBEC LTD., 1971, GM 27087  
31H/14, 31I/03

GM 028149

SHELL QUEBEC LTD., ST-LAWRENCE LOWLANDS, QUEBEC,  
REPORT ON EXPLORATION ACTIVITIES ON MINERAL  
EXPLORATION LICENCE N° 258 FOR THE 1971/72 LICENCE  
YEAR, BY SHELL QUEBEC LTD., 1972, GM 28149  
31H/14, 31I/03

GM 028434

DEVELOPMENT AIGLE D'OR, ST-LAWRENCE LOWLANDS,  
QUEBEC, OIL AND GAS RESOURCES OF QUEBEC PERMIT 514,  
BY CLARK T.H., 1972, GM 28434  
31H/11, 31H/12, 31H/13, 31H/14

GM 029032

DEVELOPMENT AIGLE D'OR, ST-LAWRENCE LOWLANDS,  
QUEBEC, GRAVITY SURVEY OF THE L'ASSOMPTION PERMIT,  
BY OVERLAND EXPLORATION SERVICES LTD., 1969,  
GM 29032  
31H/12, 31H/13, 31H/14



SNRC 31H (SUITE)

DP 228

MRN, REGION DE SOREL, QUEBEC, RELEVÉ GRAVIMÉTRIQUE  
DE LA REGION DE SOREL, PAR GEOMINES LTÉE., 1974,  
DP 228  
31H/14, 31H/15, 31I/02, 31I/03

DP 508

MRN, BASSES-TERRES DU ST-LAURENT, QUEBEC, DONNÉES  
GRAVIMÉTRIQUES DANS LES BASSES-TERRES DU ST-LAURENT,  
PAR LES RELEVÉS GÉOPHYSIQUES INC., 1977, DP 508  
21L/05, 21L/11, 21L/12, 31H/06, 31H/07, 31H/10,  
31H/11, 31I/02, 31I/03, 31I/06, 31I/07, 31I/09

DP 508

DEP. NAT. RES., ST-LAWRENCE LOWLANDS, GRAVITY DATA  
IN ST-LAWRENCE LOWLANDS, BY LES RELEVÉS GÉOPHYSIQUES  
INC., 1977, DP 508  
21L/05, 21L/11, 21L/12, 31H/06, 31H/07, 31H/10,  
31H/11, 31I/02, 31I/03, 31I/06, 31I/07, 31I/09

SNRC 31I

GM 003565-B

GREAT SWEET GRASS OIL CO., ST-MAURICE COUNTY,  
QUEBEC, REPORT ON GRAVITY SURVEY, BY JOHNSON G.R.,  
1955, GM 3565-B  
31I/07

GM 004647

IMPERIAL OIL LTD., ST-LAWRENCE LOWLANDS, QUEBEC,  
SUMMARY REPORT ON EXPLORATORY WORK DONE IN THE ST-  
LAWRENCE LOWLANDS, BY LOWLANDS EXPLORATION LTD.,  
1955/56, GM 4647  
21L/05, 21L/12, 31H/11, 31H/12, 31H/14, 31I/01,  
31I/02, 31I/07, 31I/08, 31I/09

GM 004932

FANCOTT CLAIMS, CAXTON (AUGM) TOWNSHIP, QUEBEC,  
REPORT ON GRAVITY SURVEY, BY RADAR EXPLORATION CO  
LTD., 1957, GM 4932  
31I/07

GM 005442-A

LADUBORO OIL LTD., NICOLET COUNTY, QUEBEC, GRAVITY  
SURVEY REPORT, BY JOHNSON G.R., 1957, GM 5442-A  
21L/05, 21L/12, 31I/08

GM 005442-B

LADUBORO OIL LTD., YAMASKA COUNTY, QUEBEC, GRAVITY  
SURVEY REPORT, BY JOHNSON G.R., 1957, GM 5442-B  
31I/02

GM 005732

IMPERIAL OIL LTD., COURVAL, DE GUIRE AND NICOLET  
SEIG., QUEBEC, SUMMARY REPORT ON EXPLORATION WORK IN  
ST-LAWRENCE LOWLANDS, BY LOWLANDS EXPLORATION LTD.,  
1956/57, GM 5732  
31H/15, 31I/01, 31I/02, 31I/07

SNRC 31I (SUITE)

GM 007541

IMPERIAL OIL LTD., ST-LAWRENCE LOWLANDS, QUEBEC,  
SUMMARY REPORT ON EXPLORATORY WORK DONE IN THE ST-  
LAWRENCE LOWLANDS, BY LOWLANDS EXPLORATION LTD.,  
1954/55, GM 7541  
21L/05, 21L/12, 31H/05, 31H/06, 31H/10, 31H/11,  
31H/12, 31H/14, 31H/15, 31I/01, 31I/02, 31I/07,  
31I/08, 31I/09

GM 016476

IMPERIAL OIL LTD., ST-LAWRENCE LOWLANDS, QUEBEC,  
GRAVITY METER SURVEY, BY SIESMOGRAPH SERVICE  
CORPORATION, 1957, GM 16476  
31H/15, 31I/02, 31I/03, 31I/08

GM 024044

ALMEGA QUEBEC LTD., CAP-DE-LA-MADELEINE AND  
CHAMPLAIN SEIG., QUEBEC, GRAVITY SURVEY REPORT, BY  
JOHNSON G.R., 1957, GM 24044  
31I/07, 31I/08, 31I/09, 31I/10

GM 024045

BALD MOUNTAIN OIL CO., BATISCAN SEIG., QUEBEC,  
INTERPRETATION OF GRAVITY SURVEY, BY JOHNSON G.R.,  
1957, GM 24045  
31I/08, 31I/09

GM 026816

LA SOCIETE ACADIENNE DE RECHERCHES PETROLIERES  
LITEE., ST-LAWRENCE LOWLANDS, QUEBEC, GRAVITY SURVEY,  
BY OVERLAND EXPLORATION SERVICES LTD., 1969, GM  
GM 26816  
31H/15, 31I/01, 31I/02, 31I/03, 31I/07

GM 026832

LA SOCIETE ACADIENNE DE RECHERCHES PETROLIERES LITEE.,  
ST-LAWRENCE LOWLANDS, QUEBEC, GRAVITY SURVEY, BY  
OVERLAND EXPLORATION SERVICES LTD., 1969, GM 26832  
31H/10, 31H/11, 31H/14, 31H/15, 31I/02, 31I/03

SNRC 31I (SUITE)

GM 027081

SHELL QUEBEC LTD., ST-LAWRENCE LOWLANDS, QUEBEC,  
REPORT ON EXPLORATION ACTIVITIES ON MINERAL  
EXPLORATION LICENCE N° 197 FOR THE 1970/71 LICENCE  
YEAR, BY SHELL QUEBEC LTD., 1971, GM 27081  
21L/05, 21L/12, 31I/08

GM 027083

SHELL QUEBEC LTD., ST-LAWRENCE LOWLANDS, QUEBEC,  
REPORT ON EXPLORATION ACTIVITIES ON MINERAL  
EXPLORATION LICENCE N° 255 FOR THE 1970/71 LICENCE  
YEAR, BY SHELL QUEBEC LTD., 1971, GM 27083  
31I/09

GM 027084

SHELL QUEBEC LTD., ST-LAWRENCE LOWLANDS, QUEBEC,  
REPORT ON EXPLORATION ACTIVITIES ON MINERAL  
EXPLORATION LICENCE N° 256 FOR THE 1970/71 LICENCE  
YEAR, BY SHELL QUEBEC LTD., 1971, GM 27084  
21L/12, 31I/08, 31I/09

GM 027085

SHELL QUEBEC LTD., ST-LAWRENCE LOWLANDS, QUEBEC,  
REPORT ON EXPLORATION ACTIVITIES ON MINERAL  
EXPLORATION LICENCE N° 257 FOR THE 1970/71 LICENCE  
YEAR, BY SHELL QUEBEC LTD., 1971, GM 27085  
21L/12, 31I/09

GM 027086

SHELL QUEBEC LTD., ST-LAWRENCE LOWLANDS, QUEBEC,  
REPORT ON EXPLORATION ACTIVITIES ON MINERAL  
EXPLORATION LICENCE N° 258 FOR THE 1970/71 LICENCE  
YEAR, BY SHELL QUEBEC LTD., 1971, GM 27086  
31H/14, 31I/03

GM 027087

SHELL QUEBEC LTD., ST-LAWRENCE LOWLANDS, QUEBEC,  
REPORT ON EXPLORATION ACTIVITIES ON MINERAL  
EXPLORATION LICENCE N° 259 FOR THE 1970/71 LICENCE  
YEAR, BY SHELL QUEBEC LTD., 1971, GM 27087  
31H/14, 31I/03

SNRC 31I (SUITE)

GM 028146

SHELL QUEBEC LTD., ST-LAWRENCE LOWLANDS, QUEBEC,  
REPORT ON EXPLORATION ACTIVITIES ON MINERAL  
EXPLORATION LICENCE N° 255 FOR THE 1971/72 LICENCE  
YEAR, BY SHELL QUEBEC LTD., 1972, GM 28146  
31I/09

GM 028147

SHELL QUEBEC LTD., ST-LAWRENCE LOWLANDS, QUEBEC,  
REPORT ON EXPLORATION ACTIVITIES ON MINERAL  
EXPLORATION LICENCE N° 256 FOR THE 1971/72 LICENCE  
YEAR, BY SHELL QUEBEC LTD., 1972, GM 28147  
21L/12, 31I/08, 31I/09

GM 028149

SHELL QUEBEC LTD., ST-LAWRENCE LOWLANDS, QUEBEC,  
REPORT ON EXPLORATION ACTIVITIES ON MINERAL  
EXPLORATION LICENCE N° 258 FOR THE 1971/72 LICENCE  
YEAR, BY SHELL QUEBEC LTD., 1972, GM 28149  
31H/14, 31I/03

DP 228

MRN, REGION DE SOREL, QUEBEC, RELEVÉ GRAVIMÉTRIQUE  
DE LA RÉGION DE SOREL, PAR GEOMINES LTÉE., 1974,  
DP 228  
31H/14, 31H/15, 31I/02, 31I/03

DP 508

MRN, BASSES-TERRES DU ST-LAURENT, QUEBEC, DONNÉES  
GRAVIMÉTRIQUES DANS LES BASSES-TERRES DU ST-LAURENT,  
PAR LES RELEVÉS GÉOPHYSIQUES INC., 1977, DP 508  
21L/05, 21L/11, 21L/12, 31H/06, 31H/07, 31H/10,  
31H/11, 31I/02, 31I/03, 31I/06, 31I/07, 31I/09

DP 508

DEP. NAT. RES., ST-LAWRENCE LOWLANDS GRAVITY DATA IN  
ST-LAWRENCE LOWLANDS, BY LES RELEVÉS GÉOPHYSIQUES  
INC., 1977, DP 508  
21L/05, 21L/11, 21L/12, 31H/06, 31H/07, 31H/10,  
31H/11, 31I/02, 31I/03, 31I/06, 31I/07, 31I/09